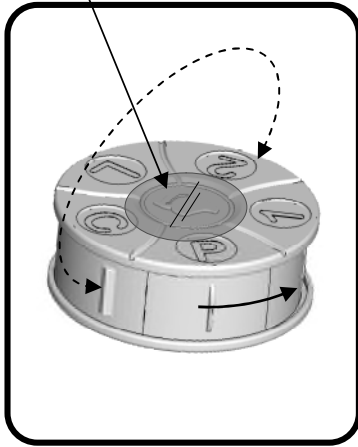


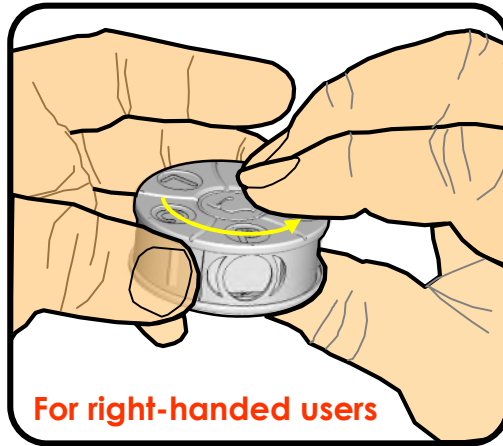
# Aroma Comp™

## How to Select Oil

\* Remove the label cover

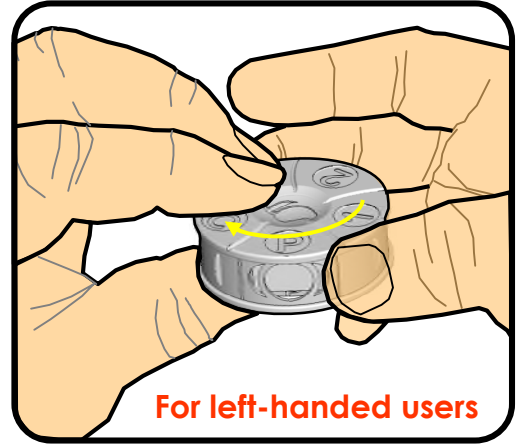


- Notice finger grips on each side of rotating ring
- Slide window to the right to open



**For right-handed users**

- Left hand secures ring
- Right hand rotates top & base **counterclockwise** to select oil



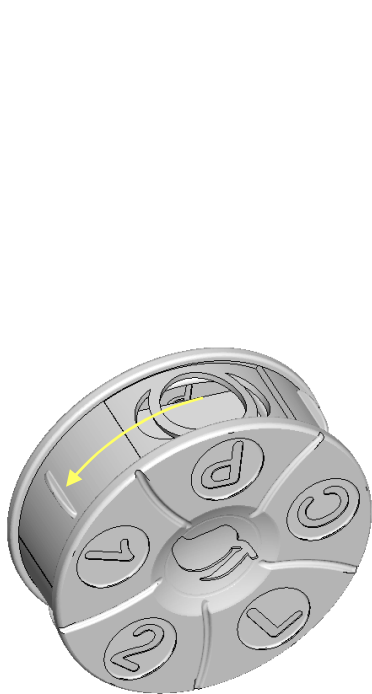
**For left-handed users**

- Right hand secures ring
- Left hand rotates top & base **clockwise** to select oil

P = peppermint  
C = citrus  
L = lavender  
1 = favorite 1  
2 = favorite 2

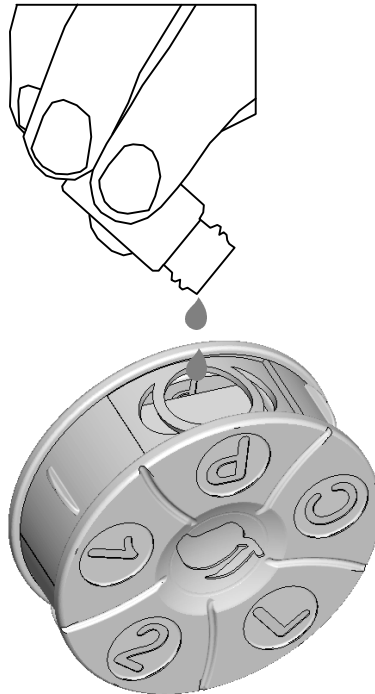
\*\* Aroma Comp is intended for aromatherapy only, and not for any medical purposes. Only use pure grade essential oils. Do not use essential oils you are allergic to.

## How to Use Aroma Comp™



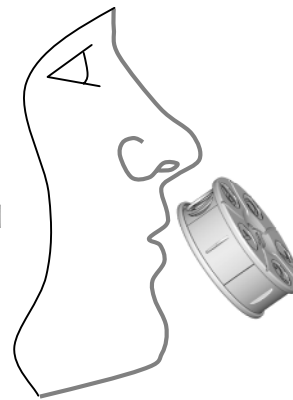
Slide door to open the window.

①



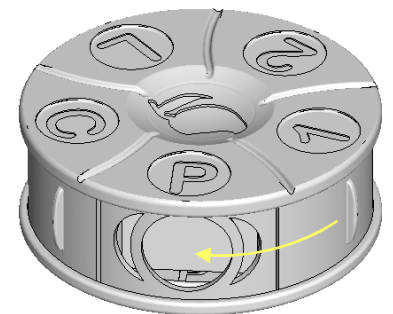
Apply 2-3 drops of oil through window and onto the Aroma Felt™. Repeat for other oils.  
\* 2-3 drops will last all day

②



With window open, select the desired oil by rotating the outer ring. Place by the nose. Inhale & exhale 3-5 times.

③



When done, slide the door closed to seal the aroma inside.

④

### 5 Oil Selections (Suggestions)

- P** - Peppermint
- C** - Citrus
- L** - Lavender
- 1** - Personal favorite 1
- 2** - Personal favorite 2

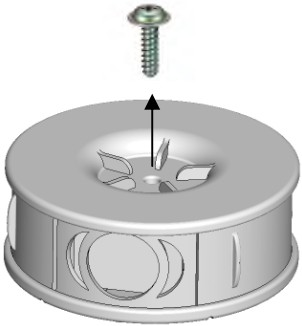
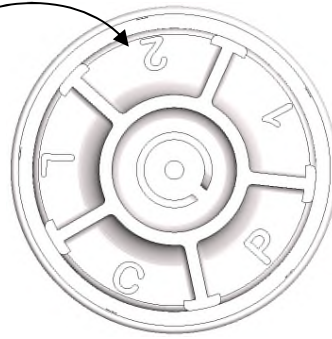
# Aroma Comp™

## Replacing Aroma Felt™

*\*Aroma Felt™ may be used many times for the same oil. It is recommended to replace Aroma Felts every 4 months.*

*\*Additional felts can be purchased on line at [www.mangodevelopment.com](http://www.mangodevelopment.com)*

*Symbols on each compartment for easy recognition*



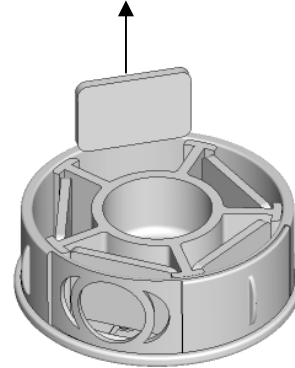
Remove screw from the back.

①



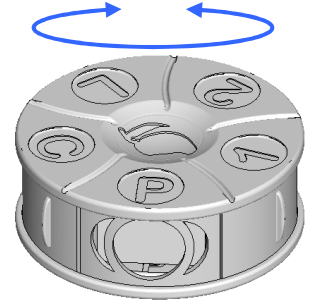
Turn over, and remove the cover.

②



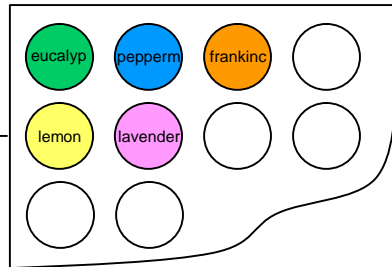
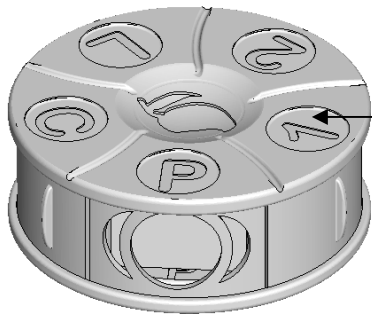
Remove old felt, and replace with new felt.

③



Slowly rotate cover until it locks in place, then turn over and replace screw.

④



Any standard 1/2" diameter stick-on oil labels will fit in these slots