

Sample Information

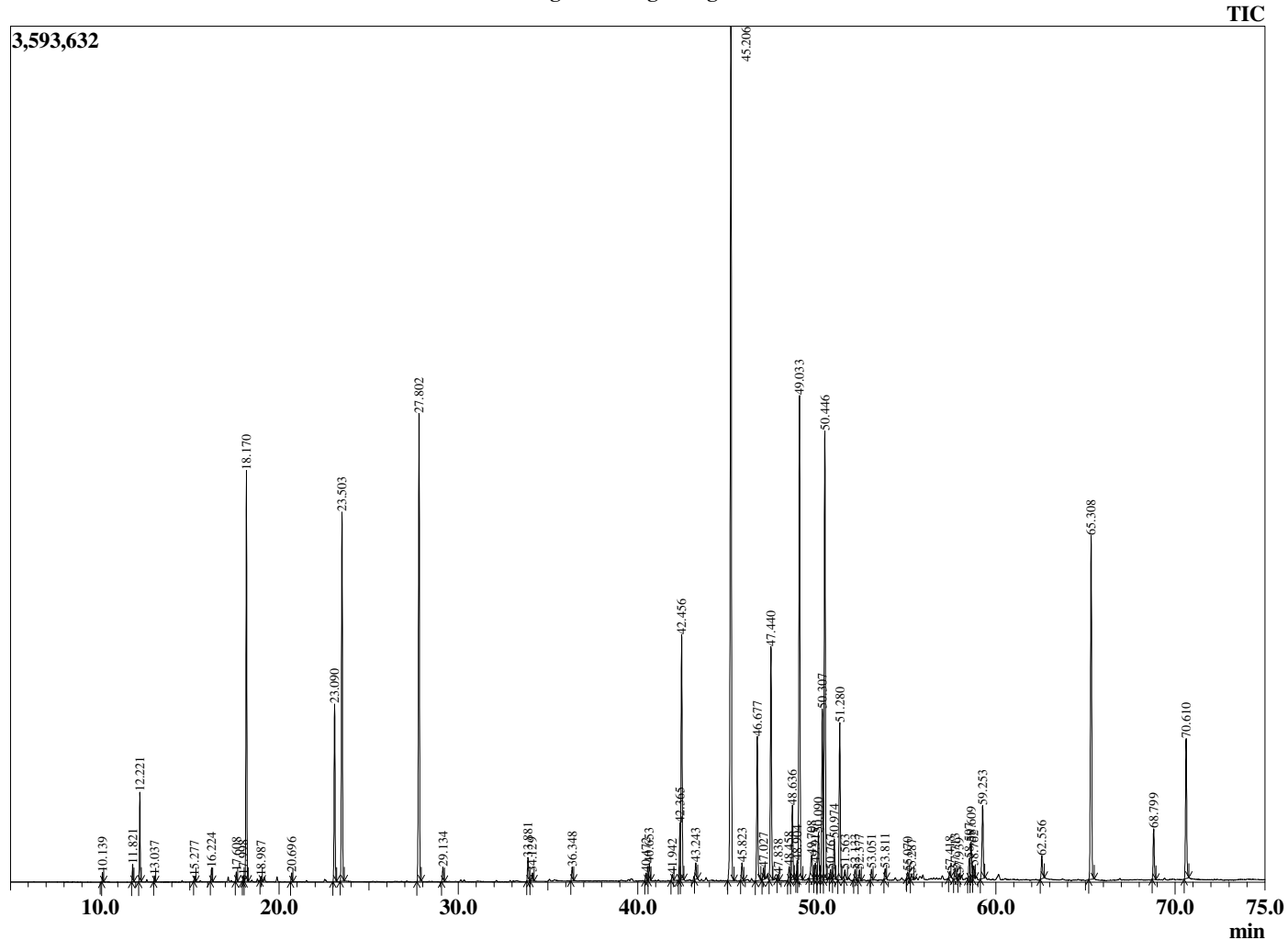
Analyzed by : Dr. Robert S. Pappas
 Analyzed : 3/27/2020 8:11:44 AM
 Sample Type : Essential Oil
 Sample Name : Ylang Ylang I - Barefut
 Sample ID : 0112
 Injection Volume : 0.10
 Instrument ID : GC-3



Peak Report TIC

R.Time	Name	Area%
10.139		
11.821	2-Methylbutyl acetate	0.10
12.221	Amyl acetate	0.21
12.221	Prenyl acetate	1.05
13.037	alpha-Pinene	0.07
15.277	Sabinene	0.07
16.224	Myrcene	0.19
17.608	Hexyl acetate	0.13
17.998	alpha-Terpinene	0.09
18.170	para-Methylanisole	5.62
18.987	1,8-Cineole	0.07
20.696	gamma-Terpinene	0.13
23.090	Methyl benzoate	2.78
23.503	Linalool	5.97
27.802	Benzyl acetate	7.76
29.134	Terpinen-4-ol	0.25
33.881	Geraniol	0.40
34.129	2-Phenethyl acetate	0.14
36.348	(E)-Anethole	0.23
40.472	alpha-Cubebene	0.13
40.653	Eugenol	0.29
41.942	alpha-Ylangene	0.11
42.365	alpha-Copaene	0.87
42.456	Geranyl acetate	4.52
43.243	beta-Elementene	0.30
45.206	beta-Caryophyllene	16.78
45.823	beta-Copaene	0.33
46.677	(E)-Cinnamyl acetate	2.68
47.027	trans-Murrola-3,5-diene	0.21
47.440	alpha-Humulene	4.39
47.838	cis-Cadina-1(6),4-diene	0.09
48.458	10-beta-H-Cadina-1(6),4-diene	0.25
48.636	trans-Cadina-1(6),4-diene	1.38
48.904	alpha-Amorphene	0.28
49.033	Germacrene D	9.11
49.708	trans-Muurolo-4(14),5-diene	0.64
49.915	Bicyclogermacrene	0.33
50.090	alpha-Muurolole	0.88
50.307	(Z,E)-alpha-Farnesene	3.22
50.446	(E,E)-alpha-Farnesene	8.68
50.767	beta-Curcumene	0.14
50.974	gamma-Cadinene	0.74
51.280	delta-Cadinene	2.94
51.563	Zonarene	0.21
52.133	trans-Cadine-1,4-diene	0.18
52.377	alpha-Cadinene	0.20
53.051	Elemol	0.19
53.811	trans-Nerolidol	0.18
55.070	Caryophyllene oxide	0.13
55.287	Globulol	0.13
57.418	Humulane-1,6-dien-3-ol	0.11
57.713	1-epi-Cubenol	0.21
57.939	gamma-Eudesmol	0.09
58.507	tau-Cadinol	0.39
58.609	epi-alpha-Cadinol	0.78
58.762	delta-Cadinol	0.24
59.253	alpha-Cadinol	1.57
62.556	(2E,6E)-Farnesol	0.46
65.308	Benzyl benzoate	6.72
68.799	Farnesyl acetate	0.94
70.610	Benzyl salicylate	2.71
		100.00

Chromatogram Ylang Ylang I - Barefut



Comments:

The analysis of this Ylang Ylang I batch sample meets the expected chemical profile for authentic essential oil of *Cananga odorata*. No contamination or adulteration was detected. The results provided in this GCMS quality analysis reflect the chemical composition of the oil and lot referenced above on the date of analysis.