

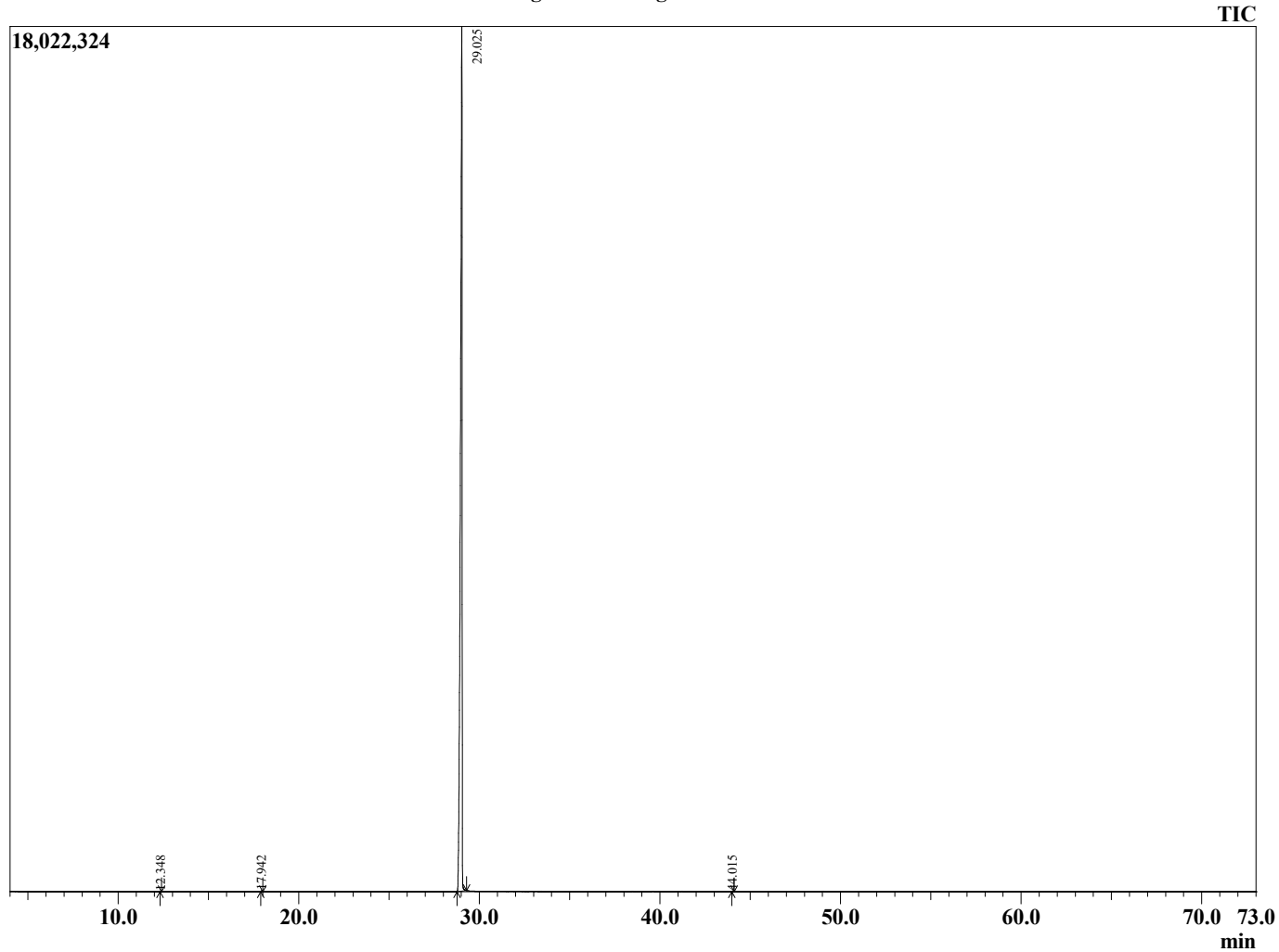
Sample Information

Analyzed by : Dr. Robert S. Pappas
Analyzed : 6/24/2021 6:21:36 PM
Sample Type : Essential Oil
Sample Name : Wintergreen Oil - Barefut
Sample ID : 0108
Injection Volume : 0.10
Instrument ID : GC-4



R.Time	Name	Peak Report TIC	Area%
12.348	alpha-Pinene		0.03
17.942	Limonene		0.05
29.025	Methyl salicylate		99.89
44.015	trans-beta-Caryophyllene		0.04
			100.00

Chromatogram Wintergreen Oil - Barefut



Comments:

The analysis of this Wintergreen batch sample meets the expected chemical profile for authentic essential oil of *Gaultheria procumbens*. No contamination or adulteration was detected. The results provided in this GCMS quality analysis reflect the chemical composition of the oil and lot referenced above on the date of analysis.

