

Sample Information

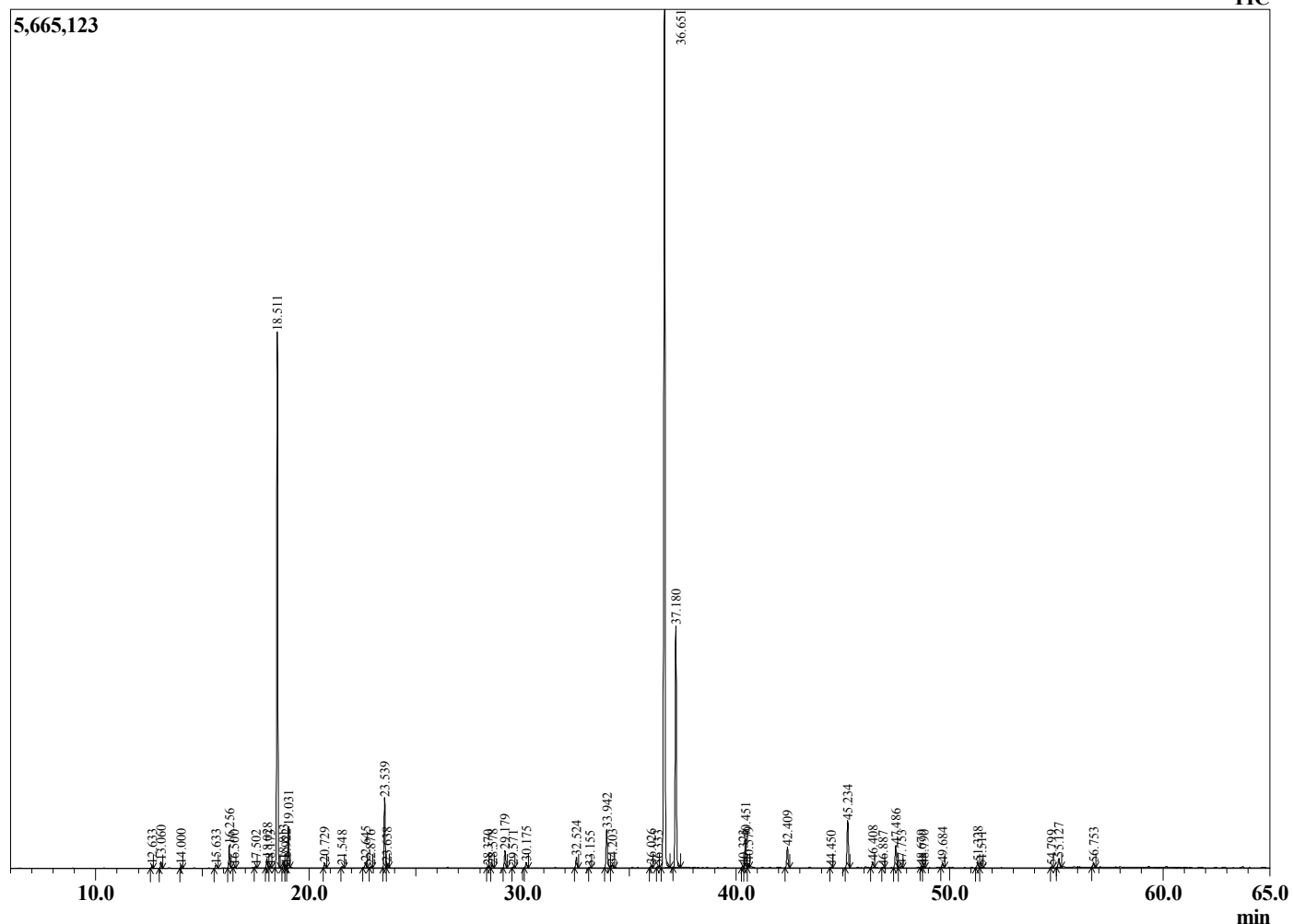
Analyzed by : Dr. Robert S. Pappas
 Analyzed : 11/21/2019 1:45:19 AM
 Sample Type : Essential Oil
 Sample Name : Thyme - Barefut
 Sample ID : 0106
 Injection Volume : 0.10
 Instrument ID: : GC-3



Peak Report TIC

R.Time	Name	Area%
12.633	alpha-Thujene	0.12
13.060	alpha-Pinene	0.24
14.000	Camphene	0.14
15.633	Unidentified	0.17
16.256	Myrcene	0.90
16.500	p-Menthane	0.06
17.502	3-Carene	0.08
18.028	alpha-Terpinene	0.41
18.173	ortho-Cymene	0.08
18.511	para-Cymene	22.83
18.813	Limonene	0.31
18.922	beta-Phellandrene	0.09
19.031	1,8-Cineole	1.78
20.729	gamma-Terpinene	0.22
21.548	trans-Sabinene hydrate	0.08
22.645	Unidentified	0.29
22.876	Dehydro-p-cymene	0.06
23.539	Linalool	3.15
23.638	cis-Sabinene hydrate	0.15
28.370	3-Thujen-2-one	0.07
28.578	Borneol	0.17
29.179	Terpinen-4-ol	0.84
29.571	p-Cymen-8-ol	0.06
30.175	alpha-Terpineol	0.28
32.524	Methyl thymol ether	0.53
33.155	Unidentified	0.03
33.942	Geraniol	2.02
34.203	Piperitone	0.14
36.026	Isothymol	0.11
36.333	Unidentified	0.06
36.651	Thymol	44.10
37.180	Carvacrol	11.90
40.323	Thymol acetate	0.09
40.451	alpha-Terpinyl acetate	1.50
40.579	gamma-Terpinyl acetate	0.19
42.409	alpha-Copaene	1.14
44.450	Unidentified	0.03
45.234	beta-Caryophyllene	2.51
46.408	Aromadendrene	0.32
46.887	alpha-Guaiene	0.03
47.486	alpha-Humulene	1.23
47.753	Alloaromadendrene	0.09
48.679	trans-Cadina-1(6),4-diene	0.04
48.790	Unidentified	0.07
49.684	Viridiflorene	0.20
51.328	delta-Cadinene	0.29
51.511	trans-Calamenene	0.03
54.799	Spathulenol	0.06
55.127	Caryophyllene oxide	0.52
56.753	Humulene epoxide II	0.22
		100.00

Chromatogram Thyme - Barefut



Comments:

The analysis of this Thyme Oil batch sample meets the expected chemical profile for authentic essential oil of *Thymus vulgaris*. No contamination or adulteration was detected. The results provided in this GCMS quality analysis reflect the chemical composition of the oil and lot referenced above on the date of analysis.