

Sample Information

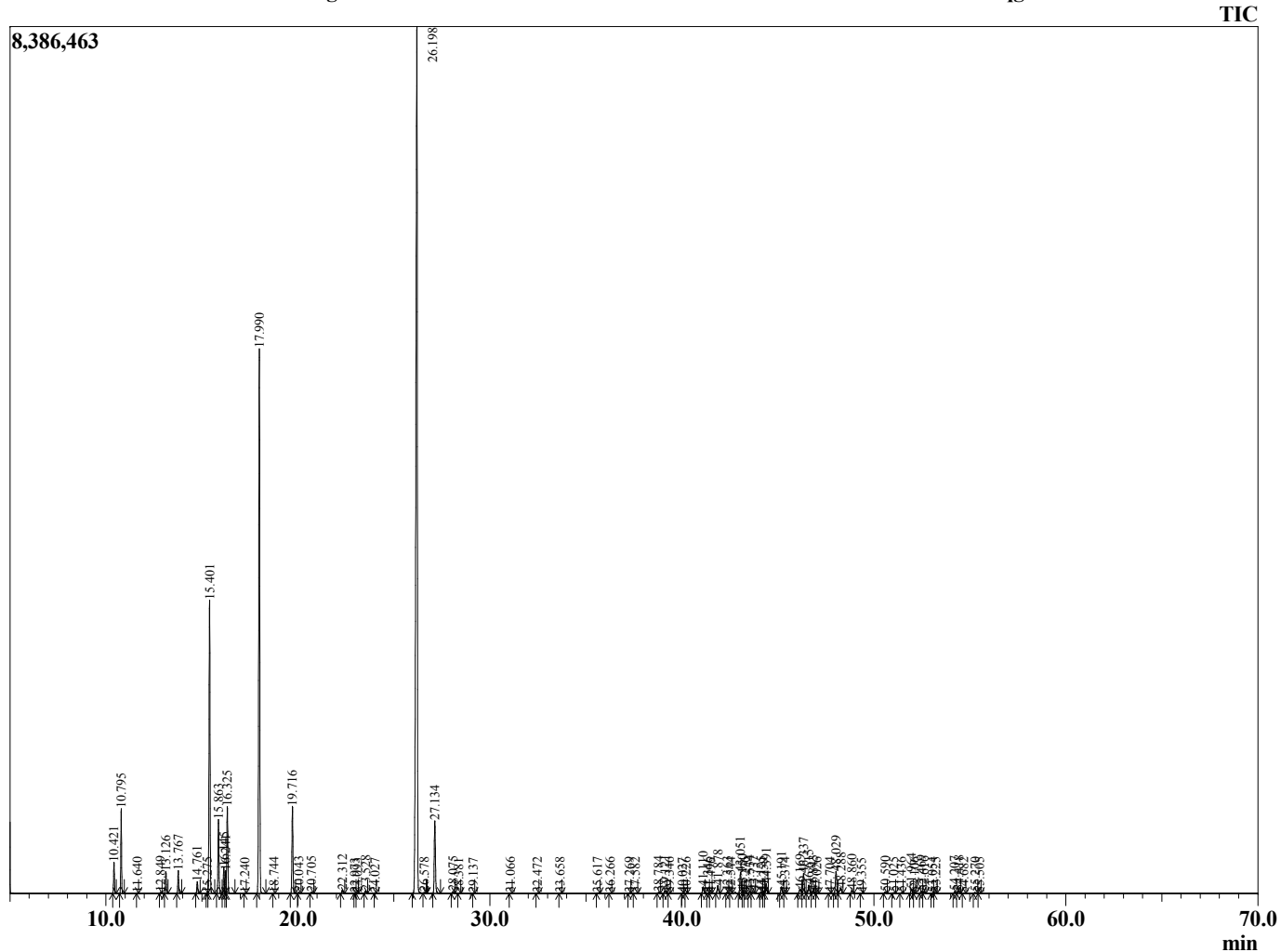
Analyzed by : Dr. Robert S. Pappas
 Analyzed : 7/27/2015 6:41:15 PM
 Sample Type : Essential Oil
 Sample Name : Tea Tree
 Sample ID : BA150727D
 Injection Volume : 0.10
 Data File : C:\GCMSsolution\Data\EOU\Tea Tree\Tea Tree 150727D.qgd



Peak Report TIC

R.Time	Name	Area%
10.421	Thujene <alpha->	0.86
10.795	Pinene<alpha->	2.34
11.640	Camphene	0.01
12.849	Sabinene	0.04
13.126	Pinene<beta->	0.66
13.767	Myrcene	0.73
14.761	Phellandrene<alpha->	0.39
15.275	Cineole<1,4->	0.02
15.401	Terpinene <alpha->	9.83
15.863	Cymene <para->	2.47
16.145	Limonene	0.90
16.241	Phellandrene <beta->	0.73
16.325	Cineole<1,8->	3.02
17.240	Ocimene <trans-beta->	0.01
17.990	Terpinene<gamma->	20.05
18.744	Sabinene-hydrate<Z>	0.01
19.716	Terpinolene	3.19
20.043	Cymenene <para->	0.05
20.705	Linalool	0.06
22.312	Menth-2-en-1-ol<cis-para->	0.13
22.973	(3Z)-3-ethylidene-1-methyl-1,4-cycloheptadi	0.01
23.093	Terpinen-3-en-1-ol	0.01
23.528	Menth-2-en-1-ol<trans-para->	0.10
24.027	Terpineol<E-dihydro-alpha>	0.01
26.198	Terpinen-4-ol	43.88
26.578	Cymen-8-ol<para-> [0.03
27.134	Terpineol <alpha->	2.95
28.075	Piperitol-E	0.08
28.381	Carvomenthenal	0.01
29.137	Nerol	0.00
31.066	Piperitone	0.02
32.472	Ascaridol glycol <E>	0.02
33.658	Ascaridol glycol <Z>	0.01
35.617	4-isopropyl-6-methyl-3-cyclohexene-1,2-diol	0.03
36.266	Bicycloelemene	0.01
37.269	Cubebene <alpha->	0.03
37.582	Eugenol.	0.03
38.784	Isoledene	0.05
39.121	Copaene <alpha->	0.14
39.346	Ylangene alpha.	0.01
40.027	Elemene<beta>	0.01
40.226	Cubebene <beta->	0.01
41.110	Gurjunene <alpha->	0.29
41.346	Longifolene	0.02
41.496	Caryophyllene<cis>	0.01
41.878	Caryophyllene <trans->	0.36
42.363	Copaene <beta->	0.05
42.544	Gurjunene beta (calarene)	0.01
43.051	Aromadendrene	0.99
43.150	Aromadendrene-isomer	0.10
43.276	Guaine <alpha>	0.03
43.534	Myrtal-4(12)-ene	0.11
43.737	Murrola-3,5-diene <trans>	0.09
44.125	Humulene <alpha>	0.07
44.259	Aromadendrene-allo dehydro	0.01
44.391	(-)-Alloaromadendrene	0.43
45.191	Cadina-1(6),4-diene<trans->	0.31
45.374	Muurolene<g>	0.02
46.169	Gurjunene<gamma->	0.27
46.337	Viridiflorene (Ledene)	0.93
46.615	Bicyclogermacrene	0.43

Chromatogram Tea Tree C:\GCMSsolution\Data\EOU\Tea Tree\Tea Tree 150727D.qgd



Comments:

Typical Ranges of Main Components:

R.Time	Name	Area%
46.843	Muurolene <alpha>	0.12
47.026	Farnesene<EE-alpha>	0.02
47.704	Cadinene<gamma.>	0.01
48.029	Cadinene <delta->	0.97
48.288	Zonarene.	0.33
48.860	Cadine-1,4-diene <trans->	0.15
49.355	Calcorene alpha.	0.01
50.590	Germacrene B	0.07
51.025	Palustrol	0.04
51.436	Spathulenol	0.04
51.964	Globulol	0.21
52.106	Gleenol	0.01
52.469	Viridiflorol	0.11
52.616	Cubeban-11-ol	0.09
53.054	Viridiflorol	0.02
53.225	Rosifoliol	0.04
54.207	Eudesmol <isomer>	0.09
54.418	Cubenol<1-epi>	0.12
54.682	Spathulenol iso	0.02
55.270	Cubenol	0.05
55.505	Muurolol<alpha>	0.01
		100.00