

Sample Information

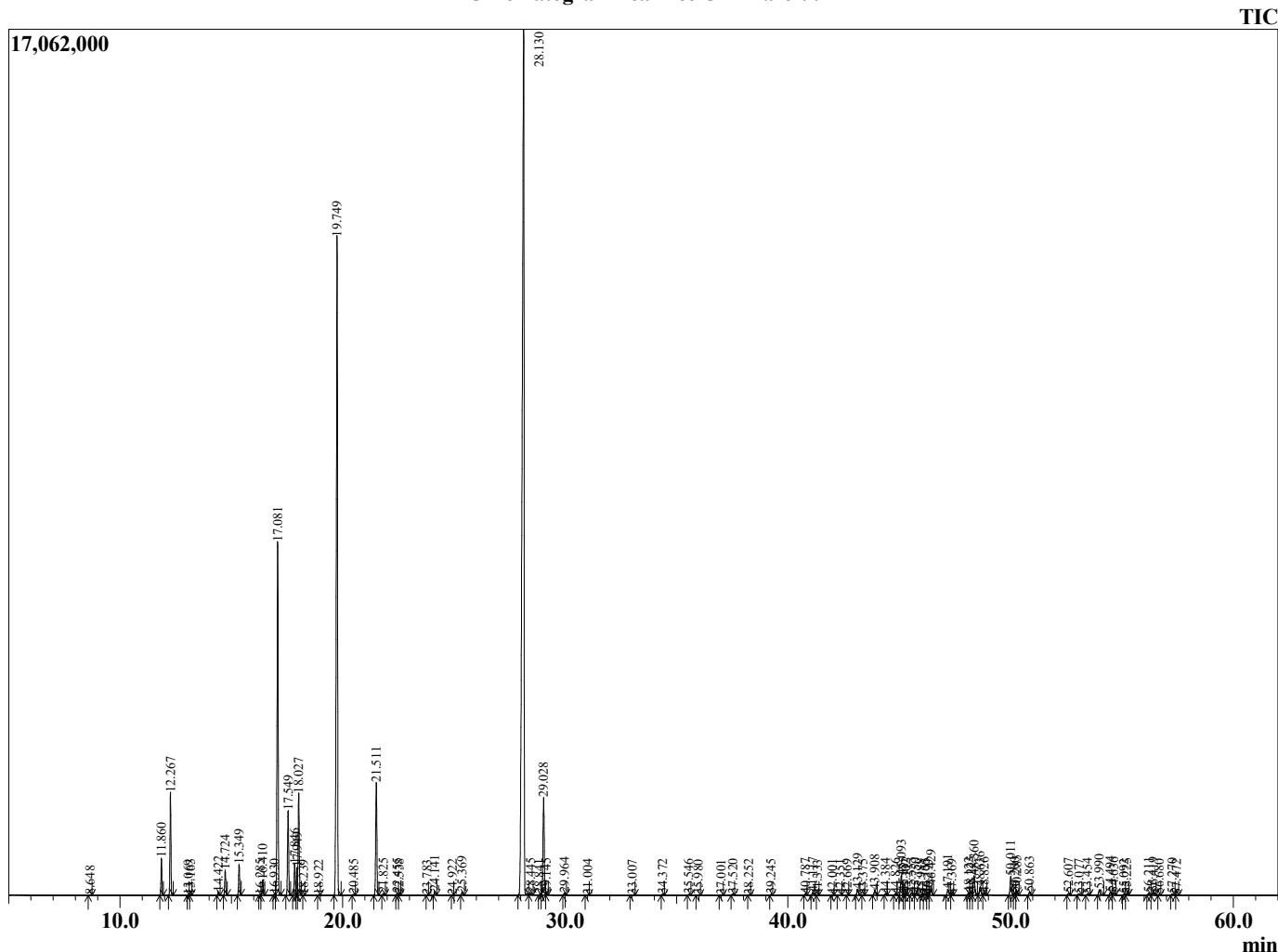
Analyzed by : Dr. Robert S. Pappas
 Analyzed : 10/21/2022 12:59:52 AM
 Sample Type : Essential Oil
 Sample Name : Tea Tree Oil - Barefut
 Sample ID : 0109
 Injection Volume : 0.10
 Instrument ID : GC-4



Peak Report TIC

R.Time	Name	Area%
4.140	2-Methylbutanal	0.02
8.648	Hex-(3Z)-enol	0.01
11.860	alpha-Thujene	0.86
12.267	alpha-Pinene	2.49
13.069	alpha-Fenchene	0.00
13.163	Camphene	0.01
14.422	Sabinene	0.09
14.724	beta-Pinene	0.66
15.349	Myrcene	0.81
16.285	Pseudolimonene	0.01
16.410	alpha-Phellandrene	0.42
16.930	1,4-Cineole	0.03
17.081	alpha-Terpinene	10.16
17.549	para-Cymene	2.41
17.846	Limonene	0.93
17.949	beta-Phellandrene	0.72
18.027	1,8-Cineole	2.88
18.239	(Z)-beta-Ocimene	0.01
18.922	(E)-beta-Ocimene	0.01
19.749	gamma-Terpinene	21.06
20.485	trans-Sabinene hydrate	0.03
21.511	Terpinolene	3.46
21.825	para-Cymenene	0.05
22.455	Linalool	0.06
22.538	cis-Sabinene hydrate	0.03
23.783	alpha-Fenchol	0.01
24.141	cis-para-Menth-2-en-1-ol	0.13
24.922	Terpin-3-en-1-ol	0.01
25.369	cis-para-Menth-2-en-1-ol	0.11
28.130	Terpinen-4-ol	42.83
28.445	para-Cymen-8-ol	0.06
28.841	Unidentified	0.01
29.028	alpha-Terpineol	3.28
29.145	cis-Piperitol	0.04
29.964	trans-Piperitol	0.08
31.004	Nerol	0.02
33.007	Unidentified	0.02
34.372	cis-Ascridol glycol	0.04
35.546	trans-Ascridol glycol	0.03
35.980	Carvacrol	0.01
37.001	Unidentified	0.01
37.520	Unidentified	0.04
38.252	delta-Elementene	0.02
39.245	alpha-Cubebene	0.02
40.787	Isoledene	0.04
41.117	alpha-Copaene	0.11
41.333	Isoledene isomer	0.01
42.001	beta-Elementene	0.02
42.351	Unidentified	0.03
42.669	Methyleugenol	0.01
43.129	alpha-Gurjunene	0.22
43.375	beta-Maaliene	0.02
43.908	trans-beta-Caryophyllene	0.20
44.384	gamma-Maaliene	0.05
44.826	alpha-Maaliene	0.05
45.093	beta-Copaene	0.76
45.185	Unidentified	0.08
45.302	Unidentified	0.03
45.553	Selina-5,11-diene	0.11
45.750	Cadina-3,5-diene	0.07
45.988	Valerena-4,7(11)-diene	0.02
46.155	alpha-Humulene	0.05

Chromatogram Tea Tree Oil - Barefut



Comments:

The analysis of this Tea Tree batch sample meets the expected chemical profile for authentic essential oil of *Melaleuca alternifolia*. No contamination or adulteration was detected. The results provided in this GCMS quality analysis reflect the chemical composition of the oil and lot referenced above on the date of analysis.

R.Time	Name	Area%
46.290	Unidentified	0.01
46.429	Alloaromadendrene	0.35
47.191	Cadina-1(6),4-diene	0.23
47.369	gamma-Murolene	0.02
48.122	delta-Selinene	0.09
48.225	beta-Selinene	0.15
48.360	Viridiflorene	0.75
48.636	Bicyclogermacrene	0.36
48.826	alpha-Murolene	0.09
50.011	delta-Cadinene	0.72
50.200	trans-Calamenene	0.07
50.285	Zonarene	0.18
50.863	trans-Cadine-1,4-diene	0.12
52.607	Gleenol	0.06
53.077	Palustrol	0.06
53.454	Spathulenol	0.05
53.990	Globulol	0.23
54.494	Viridiflorol	0.13
54.636	Cubeban-11-ol	0.09
55.092	Ledol	0.03
55.225	Rosifoliol	0.05
56.211	Unidentified	0.08
56.419	Epicubenol	0.11
56.680	Unidentified	0.03
57.270	Unidentified	0.06
57.472	delta-Cadinol	0.02
		100.00