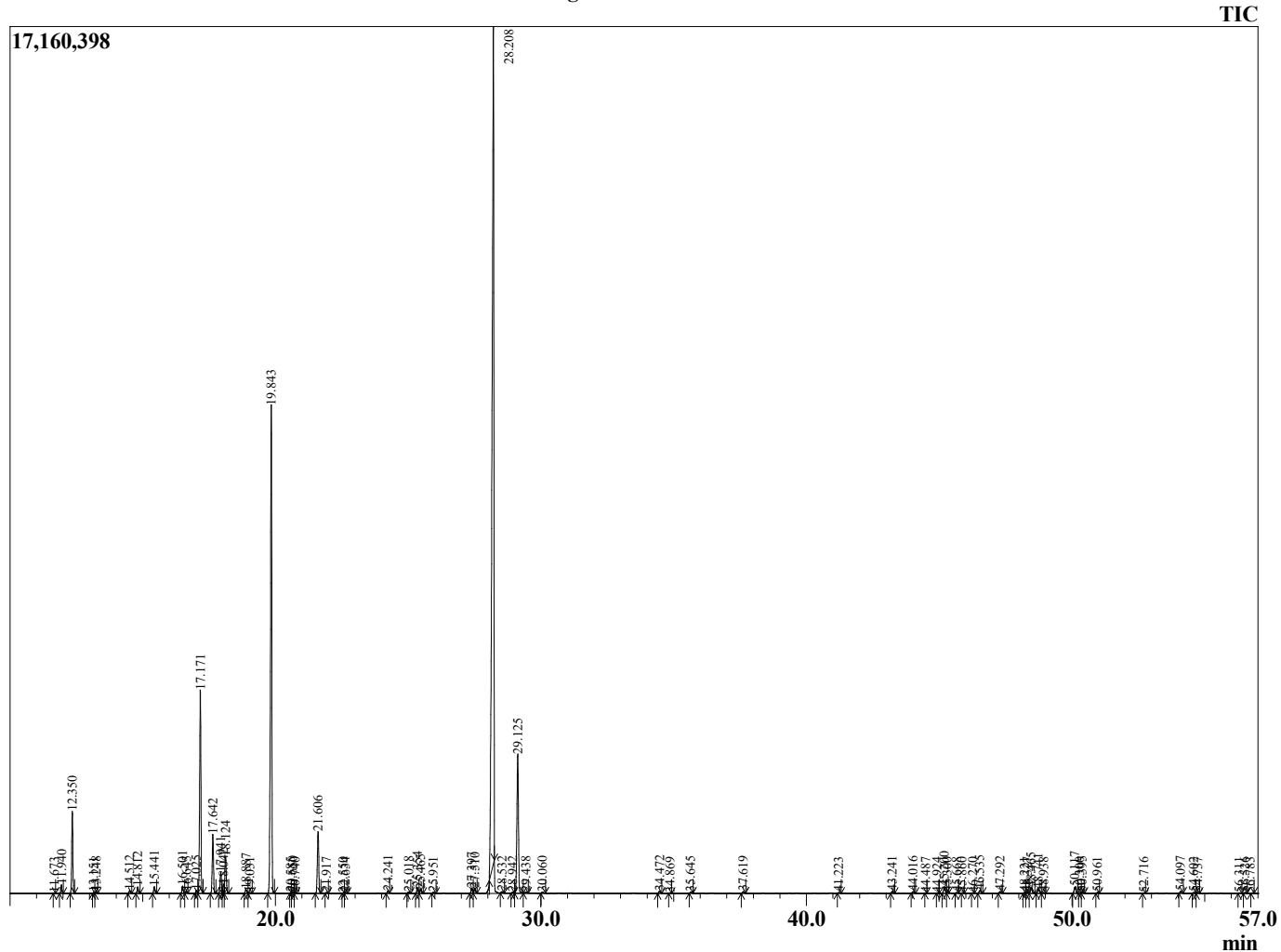


Sample Information

Analyzed by : Dr. Robert S. Pappas
 Analyzed : 6/25/2021 7:53:06 AM
 Sample Type : Essential Oil
 Sample Name : Tea Tree - Barefut
 Sample ID : 0108
 Injection Volume : 0.10
 Instrument ID : GC-4



Chromatogram Tea Tree - Barefut



R.Time	Name	Area%
11.673	Hashishene	0.02
11.940	alpha-Thujene	0.31
12.350	alpha-Pinene	2.90
13.151	alpha-Fenchene	0.03
13.248	Camphene	0.06
14.512	Sabinene	0.12
14.812	beta-Pinene	0.26
15.441	Myrcene	0.28
16.501	alpha-Phellandrene	0.29
16.645	delta-3-Carene	0.06
17.025	1,4-Cineole	0.12
17.171	alpha-Terpinene	8.17
17.642	para-Cymene	2.37
17.941	Limonene	0.87
18.042	beta-Phellandrene	0.36
18.124	1,8-Cineole	1.59
18.887	2,2-dimethyl-5-(1-methyl-1-propenyl)-tetrahy	0.18
19.031	trans-beta-Ocimene	0.05
19.843	gamma-Terpinene	20.13
20.585	Unidentified	0.02
20.650	Unidentified	0.07
20.740	Pinol	0.03
21.606	Terpinolene	2.74
21.917	para-Cymenene	0.04
22.550	Linalool	0.02
22.634	trans-Sabinene hydrate	0.05
24.241	cis-para-Menth-2-en-1-ol	0.11
25.018	Terpin-3-en-1-ol	0.06
25.354	trans-Pinocarveol	0.27
25.465	trans-para-Menth-2-en-1-ol	0.19
25.951	trans-beta-Terpineol	0.05
27.397	delta-Terpineol	0.27
27.510	Borneol	0.25
28.208	Terpinen-4-ol	47.98
28.532	para-Cymen-8-ol	0.06
28.942	Unidentified	0.05
29.125	alpha-Terpineol	6.74
29.438	gamma-Terpineol	0.07
30.060	Unidentified	0.07
34.472	cis-Ascrinol glycol	0.11
34.869	Unidentified	0.02
35.645	Unidentified	0.07
37.619	Unidentified	0.08
41.223	alpha-Copaene	0.04
43.241	alpha-Gurjunene	0.10
44.016	trans-beta-Caryophyllene	0.09
44.487	Unidentified	0.01
44.924	Unidentified	0.01
45.200	Aromadendrene	0.35
45.300	Unidentified	0.03
45.668	alpha-Guaiene	0.03
45.860	trans-Murrola-3,5-diene	0.01
46.270	alpha-Humulene	0.02
46.535	Alloaromadendrene	0.16
47.292	10-beta-H-Cadina-1(6),4-diene	0.09
48.221	delta-Selinene	0.03

Comments:

The analysis of this Tea Tree batch sample meets the expected chemical profile for authentic essential oil of *Melaleuca alternifolia*. No contamination or adulteration was detected. The results provided in this GCMS quality analysis reflect the chemical composition of the oil and lot referenced above on the date of analysis.

©Copyright 2021 by Essential Oil University. All rights reserved. Copying, use, dissemination, or distribution of this report, in the express written permission of Essential Oil University is

R.Time	Name	Area%
48.327	beta-Selinene	0.07
48.465	Viridiflorene	0.33
48.741	Bicyclogermacrene	0.23
48.938	alpha-Murolene	0.04
50.117	delta-Cadinene	0.34
50.300	trans-Calamene	0.03
50.395	Zonarene	0.06
50.961	trans-Cadina-1,4-diene	0.05
52.716	Unidentified	0.02
54.097	Spathulenol	0.09
54.602	Viridiflorol	0.05
54.737	Guaiol	0.04
56.311	Unidentified	0.03
56.526	1-epi-Cubenol	0.04
56.783	Unidentified	0.01
		100.00