

Sample Information

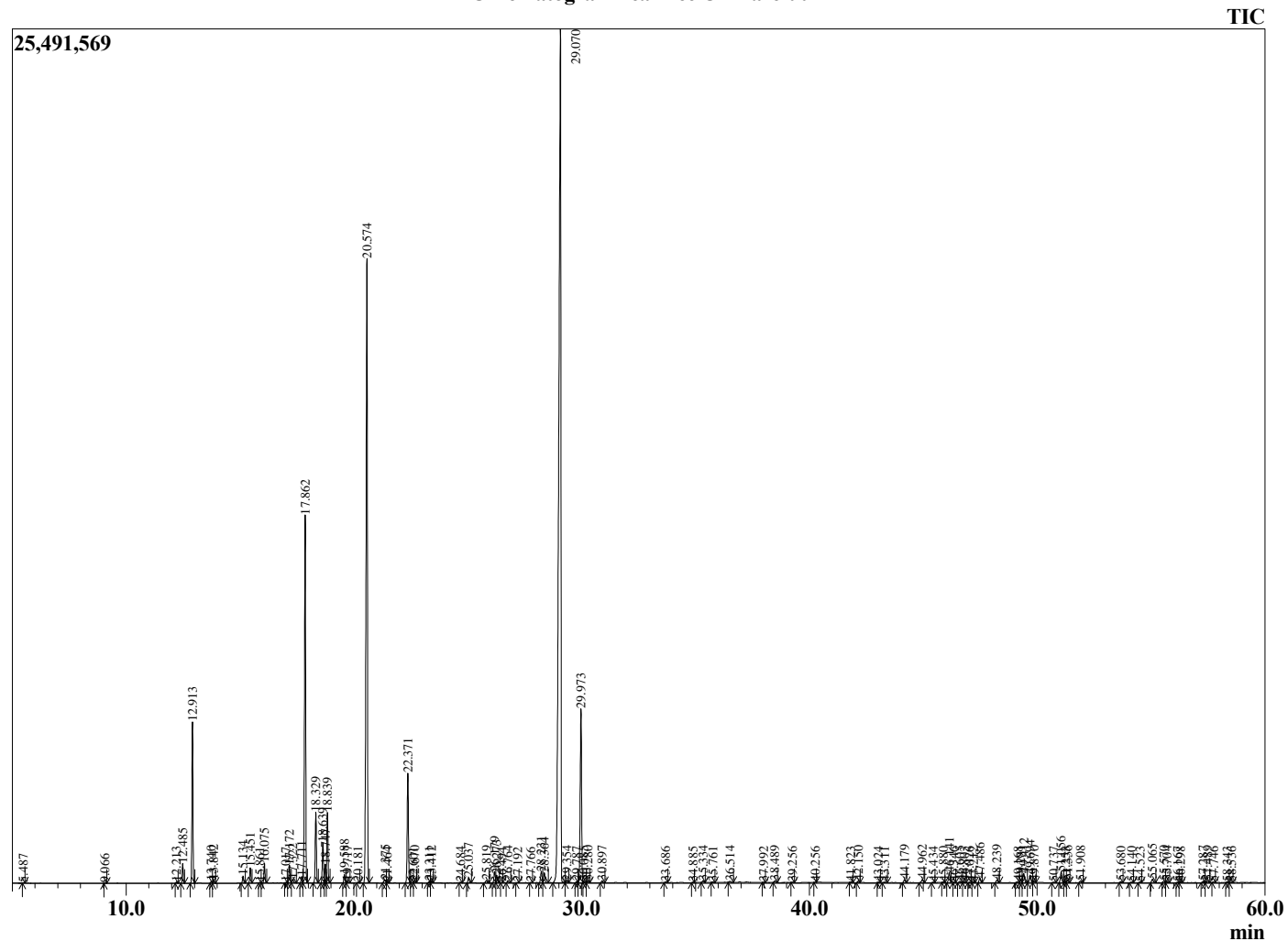
Analyzed by : Dr. Robert S. Pappas  
 Analyzed : 2/20/2021 5:28:28 AM  
 Sample Type : Essential Oil  
 Sample Name : Tea Tree Oil-Barefut  
 Sample ID : 0107  
 Injection Volume : 0.10  
 Instrument ID: : GC-3



Peak Report TIC

R.Time	Name	Area%
4.325	2-Methylbutanal	0.01
5.487	Isobutyric acid	0.01
9.066	Hex-3(Z)-enol	0.01
12.213	Hashishene	0.03
12.485	alpha-Thujene	0.46
12.913	alpha-Pinene	3.92
13.740	alpha-Fenchene	0.05
13.842	Camphene	0.08
15.134	Sabinene	0.18
15.451	beta-Pinene	0.39
15.861	3-para-Menthene	0.01
16.075	Myrcene	0.48
17.017	Unidentified	0.01
17.172	alpha-Phellandrene	0.47
17.322	delta-3-Carene	0.12
17.711	1,4-Cineole	0.17
17.862	alpha-Terpinene	10.31
18.329	para-Cymene	1.95
18.639	Limonene	1.13
18.747	beta-Phellandrene	0.51
18.839	1,8-Cineole	1.88
19.588	Tetrahydrofuran, 2,2-dimethyl-5-(1-methylpr	0.24
19.717	(E)-beta-Ocimene	0.06
20.181	Unidentified	0.02
20.574	gamma-Terpinene	20.43
21.375	meta-Cresol	0.13
21.464	Pinol	0.03
22.371	Terpinolene	3.17
22.601	Unidentified	0.01
22.670	para-Cymenene	0.05
23.311	Linalool	0.04
23.412	cis-Sabinene hydrate	0.06
24.684	alpha-Fenchol	0.02
25.037	cis-para-Menth-2-en-1-ol	0.16
25.819	Terpin-3-en-1-ol	0.09
26.179	trans-Pinocarveol	0.36
26.273	trans-para-Menth-2-en-1-ol	0.23
26.494	Verbenol	0.01
26.764	trans-beta-Terpineol	0.08
27.192	Unidentified	0.01
27.766	Isoborneol	0.01
28.231	delta-Terpineol	0.38
28.364	Borneol	0.34
29.070	Terpinen-4-ol	42.49
29.354	para-Cymen-8-ol	0.06
29.787	Unidentified	0.03
29.973	alpha-Terpineol	5.74
30.085	cis-Piperitol	0.05
30.280	gamma-Terpineol	0.06
30.897	trans-Piperitol	0.06
33.686	Geraniol	0.02
34.885	Geranial	0.01
35.334	cis-Ascridol glycol	0.06
35.761	Unidentified	0.02
36.514	trans-Ascridol glycol	0.04
37.992	Unidentified	0.01
38.489	Unidentified	0.06
39.256	delta-Elemene	0.02
40.256	alpha-Cubebene	0.01
41.823	Isodene	0.02
42.150	alpha-Copaene	0.06
43.024	beta-Elemene	0.01

Chromatogram Tea Tree Oil-Barefut



Comments:

The analysis of this Tea Tree batch sample meets the expected chemical profile for authentic essential oil of *Melaleuca alternifolia*. No contamination or adulteration was detected. The results provided in this GCMS quality analysis reflect the chemical composition of the oil and lot referenced above on the date of analysis.

R.Time	Name	Area%
43.311	Unidentified	0.03
44.179	alpha-Gurjunene	0.10
44.962	trans-beta-Caryophyllene	0.12
45.434	Unidentified	0.02
45.880	Unidentified	0.02
46.141	Aromadendrene	0.38
46.346	6,9-Guanidiene	0.02
46.605	alpha-Guaiene	0.06
46.803	trans-Murrola-3,5-diene	0.03
47.026	Unidentified	0.01
47.212	alpha-Humulene	0.02
47.486	Alloaromodendrene	0.17
48.239	10-beta-H-Cadina-1(6),4-diene	0.11
49.168	delta-Selinene	0.06
49.281	beta-Selinene	0.07
49.412	Viridiflorene	0.35
49.694	Bicyclogermacrene	0.28
49.870	alpha-Murolene	0.04
50.737	Eugenol acetate	0.02
51.056	delta-Cadinene	0.37
51.253	trans-Calamenene	0.03
51.336	Zonarene	0.08
51.908	trans-Cadina-1,4-diene	0.06
53.680	Unidentified	0.04
54.140	Palustrol	0.03
54.523	Spathulenol	0.03
55.065	Globulol	0.13
55.570	Viridiflorol	0.06
55.704	Guaiol	0.05
56.167	Ledol	0.01
56.298	Rosifoliol	0.03
57.287	Unidentified	0.05
57.489	1-epi-Cubenol	0.06
57.746	Unidentified	0.02
58.343	Unidentified	0.04
58.536	delta-Cadinol	0.02
		100.00