

Sample Information

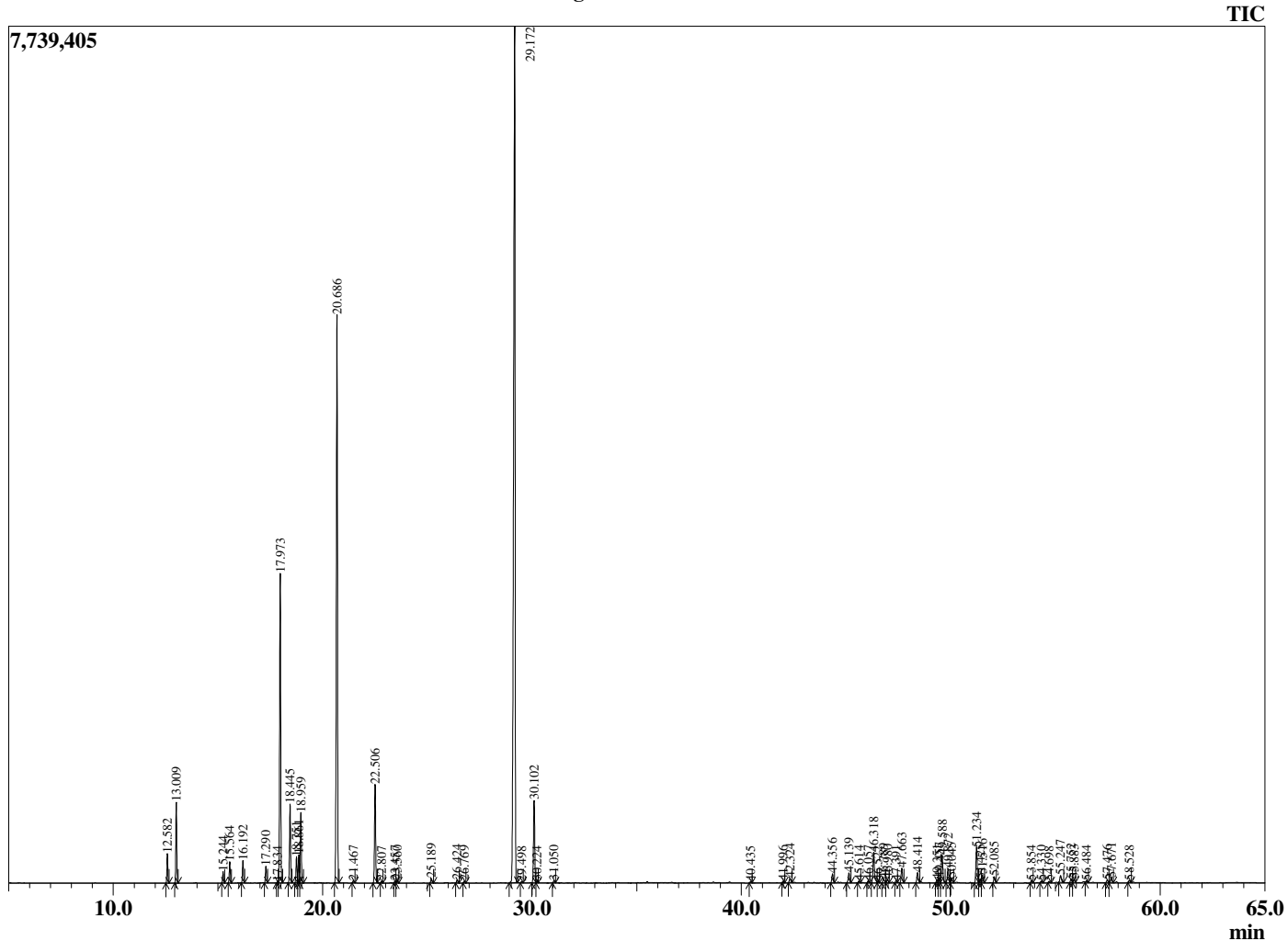
Analyzed by : Dr. Robert S. Pappas
 Analyzed : 3/18/2020 2:17:41 AM
 Sample Type : Essential Oil
 Sample Name : Tea Tree - Barefut
 Sample ID : 0106
 Injection Volume : 0.10
 Instrument ID : GC-3



Peak Report TIC

R.Time	Name	Area%
4.341	2-Methylbutanal	0.01
12.582	alpha-Thujene	0.81
13.009	alpha-Pinene	2.25
15.244	Sabinene	0.33
15.564	beta-Phellandrene	0.65
16.192	Myrcene	0.69
17.290	alpha-Phellandrene	0.51
17.834	1,4-Cineole	0.03
17.973	alpha-Terpinene	10.01
18.445	para-Cymene	2.53
18.751	Limonene	0.86
18.861	beta-Phellandrene	0.96
18.959	1,8-cineole	2.29
20.686	gamma-Terpinene	20.01
21.467	trans-Sabinene hydrate	0.08
22.506	Terpinolene	3.37
22.807	para-Cymenene	0.06
23.457	Linalool	0.06
23.560	cis-Sabinene hydrate	0.09
25.189	cis-para-Menth-2-en-1-ol	0.16
26.424	trans-para-Menth-2-en-1-ol	0.12
26.769	Camphor	0.07
29.172	Terpinen-4-ol	40.60
29.498	para-Cymen-8-ol	0.04
30.102	alpha-Terpineol	3.08
30.224	cis-Piperitol	0.05
31.050	trans-Piperitol	0.09
40.435	alpha-Cubebene	0.05
41.996	Isoledene	0.06
42.324	alpha-Copaene	0.19
44.356	alpha-Gurjunene	0.38
45.139	beta-Caryophyllene	0.44
45.614	Unidentified	0.07
46.057	Unidentified	0.07
46.318	Aromadendrene	1.45
46.522	Unidentified	0.06
46.789	alpha-Guaiene	0.19
46.980	trans-Murrola-3,5-diene	0.14
47.391	alpha-Humulene	0.07
47.663	Alloaromadendrene	0.60
48.414	10-beta-H-Cadina-1(6),4-diene	0.47
49.351	delta-Selinene	0.13
49.457	beta-Selinene	0.22
49.588	Viridiflorene (Ledene)	1.25
49.872	Bicyclogermacrene	0.64
50.045	alpha-Murolene	0.18
51.234	delta-Cadinene	1.47
51.425	trans-Calamenene	0.13
51.516	Zonarene	0.35
52.085	trans-Cadine-1,4-diene	0.25
53.854	Unidentified	0.09
54.330	Palustrol	0.08
54.698	Spathulenol	0.06
55.247	Globulol	0.33
55.752	Viridiflorol	0.17
55.883	Guaiol	0.13
56.484	Rosifoliol	0.06
57.476	Eudesm-5-en-11-ol	0.12
57.671	1-epi-Cubenol	0.21
58.528	Unidentified	0.09
		100.00

Chromatogram Tea Tree - Barefut



Comments:

The analysis of this Tea Tree batch sample meets the expected chemical profile for authentic essential oil of *Melaleuca alternifolia*. No contamination or adulteration was detected.

The results provided in this GCMS quality analysis reflect the chemical composition of the oil and lot referenced above on the date of analysis.