

Sample Information

Analyzed by : Dr. Robert S. Pappas  
 Analyzed : 2/15/2019 7:26:18 PM  
 Sample Type : Essential Oil  
 Sample Name : Tea Tree - Barefut  
 Sample ID : 0105  
 Injection Volume : 0.10  
 Instrument ID : GC-4

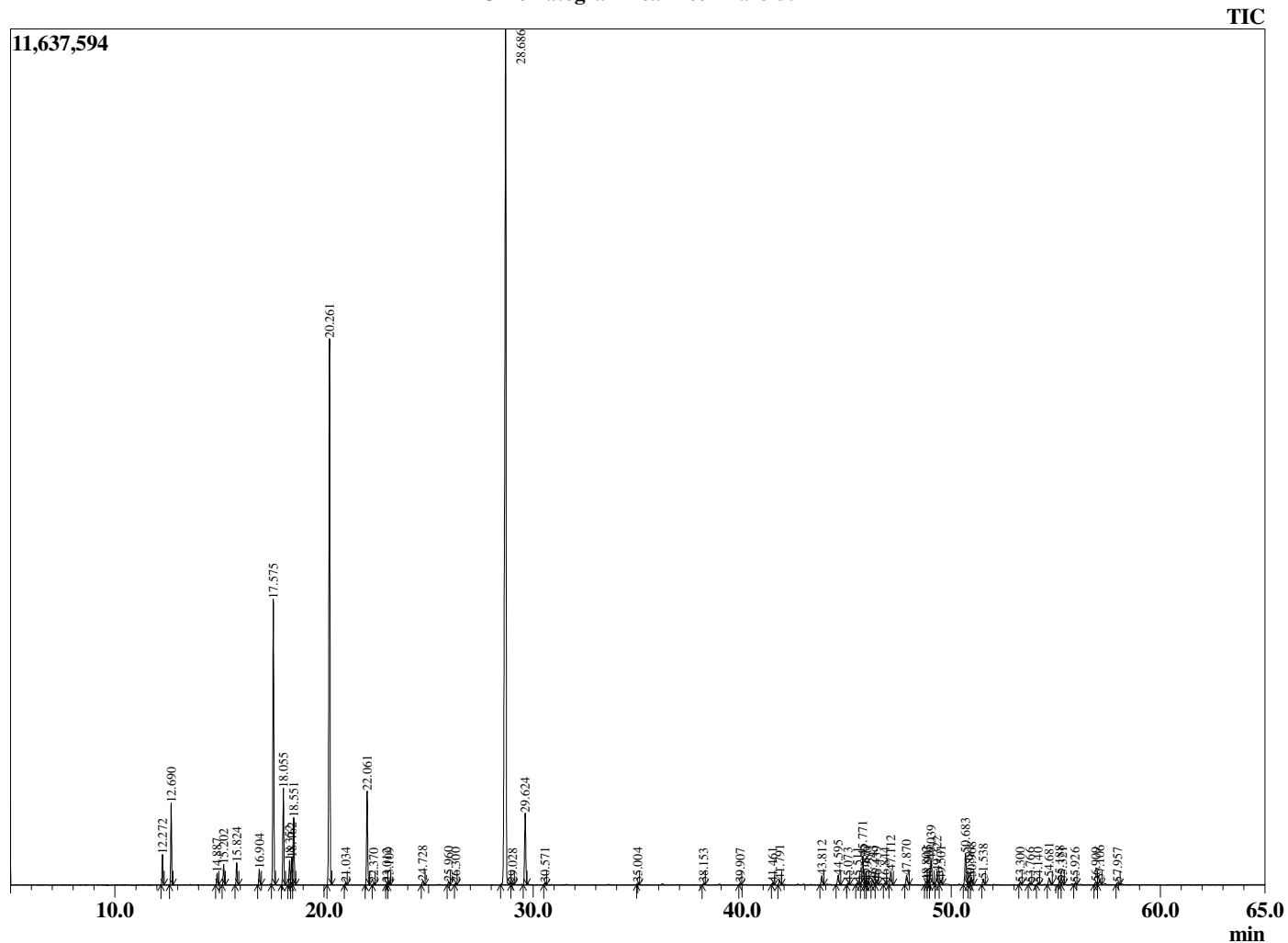


Peak Report TIC

R.Time	Name	Area%
12.272	alpha-Thujene	0.87
12.690	alpha-Pinene	2.36
14.887	Sabinene	0.37
15.202	beta-Pinene	0.66
15.824	Myrcene	0.71
16.904	alpha-Phellandrene	0.51
17.575	alpha-Terpinene	9.78
18.055	para-Cymene	3.28
18.352	Limonene	0.86
18.462	beta-Phellandrene	0.93
18.551	1,8-Cineole	2.29
20.261	gamma-Terpinene	19.95
21.034	trans-Sabinene hydrate	0.07
22.061	Terpinolene	3.31
22.370	para-Cymenene	0.06
23.012	Linalool	0.05
23.109	cis-Sabinene hydrate	0.09
24.728	cis-para-Menth-2-en-1-ol	0.16
25.960	trans-para-Menth-2-en-1-ol	0.11
26.300	Camphor	0.06
28.686	Terpinen-4-ol	40.27
29.028	para-Cymen-8-ol	0.06
29.624	alpha-Terpineol	2.88
30.571	cis-Piperitol	0.07
35.004	cis-Ascrinol glycol	0.06
38.153	Unidentified	0.06
39.907	alpha-Cubebene	0.05
41.461	Isoledene	0.07
41.791	alpha-Copaene	0.21
43.812	alpha-Gurjunene	0.39
44.595	beta-Caryophyllene	0.45
45.073	Unidentified	0.07
45.511	Unidentified	0.08
45.771	Aromadendrene	1.30
45.870	Unidentified	0.12
45.980	Unidentified	0.06
46.243	alpha-Guaiene	0.19
46.439	trans-Murrola-3,5-diene	0.14
46.844	alpha-Humulene	0.08
47.112	Alloaromadendrene	0.59
47.870	10-beta-Cadina-1(6),4-diene	0.46
48.802	delta-Selinene	0.14
48.905	beta-Selinene	0.22
49.039	Viridiflorene (Ledene)	1.19
49.322	Bicyclogermacrene	0.61
49.501	alpha-Murolene	0.18
50.683	delta-Cadinene	1.45
50.881	cis-Calamenene	0.15
50.968	Zonarene	0.34
51.538	trans-Cadine-1,4-diene	0.24
53.300	Unidentified	0.10
53.766	Unidentified	0.07
54.140	Spathulenol	0.07
54.681	Globulol	0.34
55.188	Viridiflorol	0.16
55.321	Guaiol	0.13
55.926	Eudesm-5-en-11-ol	0.06
56.909	Unidentified	0.12
57.106	1-epi-Cubenol	0.21
57.957	Unidentified	0.10
		100.00

This report is valid for 1 year from the analyzed date.

Chromatogram Tea Tree - Barefut



Comments:

The analysis of this Tea Tree batch sample meets the expected chemical profile for authentic essential oil of *Melaleuca alternifolia*. No contamination or adulteration was detected.