

Sample Information

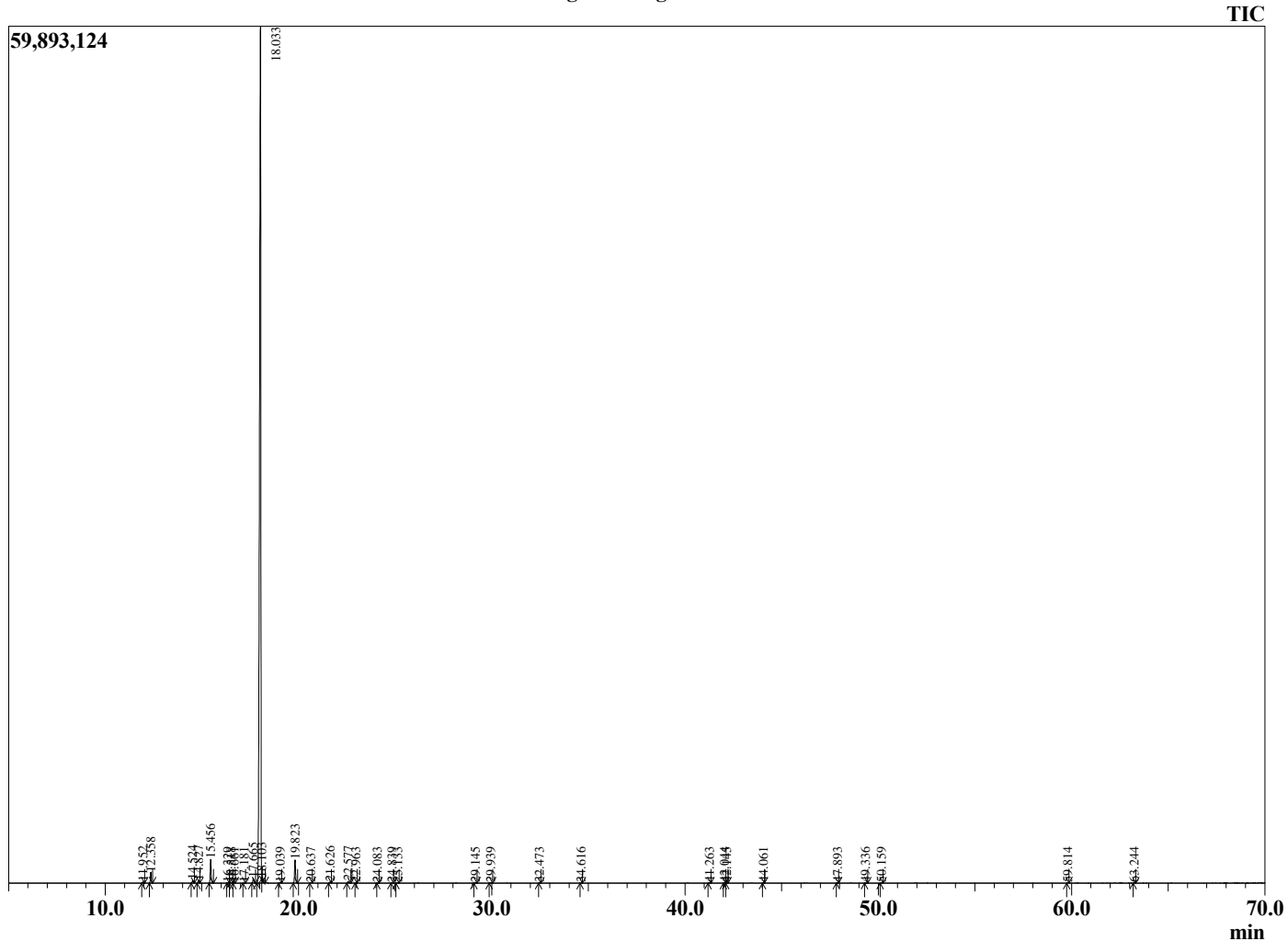
Analyzed by : Dr. Robert S. Pappas
 Analyzed : 3/23/2021 11:11:11 AM
 Sample Type : Essential Oil
 Sample Name : Tangerine - Barefut
 Sample ID : 0106
 Injection Volume : 0.10
 Instrument ID: : GC-4



Peak Report TIC

R.Time	Name	Area%
11.952	alpha-Thujene	0.09
12.358	alpha-Pinene	0.70
14.524	Sabinene	0.21
14.827	beta-Pinene	0.19
15.456	Myrcene	1.69
16.329	Octanal	0.01
16.518	alpha-Phellandrene	0.03
16.661	delta-3-Carene	0.04
17.181	alpha-Terpinene	0.03
17.665	para-Cymene	0.40
18.033	Limonene	94.17
18.103	beta-Phellandrene	0.02
19.039	(E)-beta-Ocimene	0.04
19.823	gamma-Terpinene	1.82
20.637	Octanol	0.02
21.626	Terpinolene	0.08
22.577	Linalool	0.15
22.963	Nonanal	0.01
24.083	trans-para-Mentha-2,8-dien-1-ol	0.01
24.839	cis-Limonene oxide	0.02
25.133	trans-Limonene oxide	0.02
29.145	alpha-Terpineol	0.04
29.939	Decanal	0.05
32.473	Carvone	0.01
34.616	Perillaldehyde	0.01
41.263	alpha-Copaene	0.03
42.044	beta-Cubebene	0.02
42.145	beta-Elemene	0.01
44.061	trans-beta-Caryophyllene	0.01
47.893	Germacrene D	0.01
49.336	(E,E)-alpha-Farnesene	0.02
50.159	delta-Cadinene	0.03
59.814	alpha-Bisabolol	0.01
63.244	alpha-Sinensal	0.01
		100.00

Chromatogram Tangerine - Barefut



Comments:

The analysis of this Tangerine batch sample meets the expected chemical profile for authentic essential oil of *Citrus reticulata*. No contamination or adulteration was detected. The results provided in this GCMS quality analysis reflect the chemical composition of the oil and lot referenced above on the date of analysis.