

Sample Information

Analyzed by : Dr. Robert S. Pappas  
 Analyzed : 9/25/2019 7:17:46 AM  
 Sample Type : Essential Oil  
 Sample Name : Spearmint - Barefut  
 Sample ID : 0106  
 Injection Volume : 0.10  
 Instrument ID : GC-2

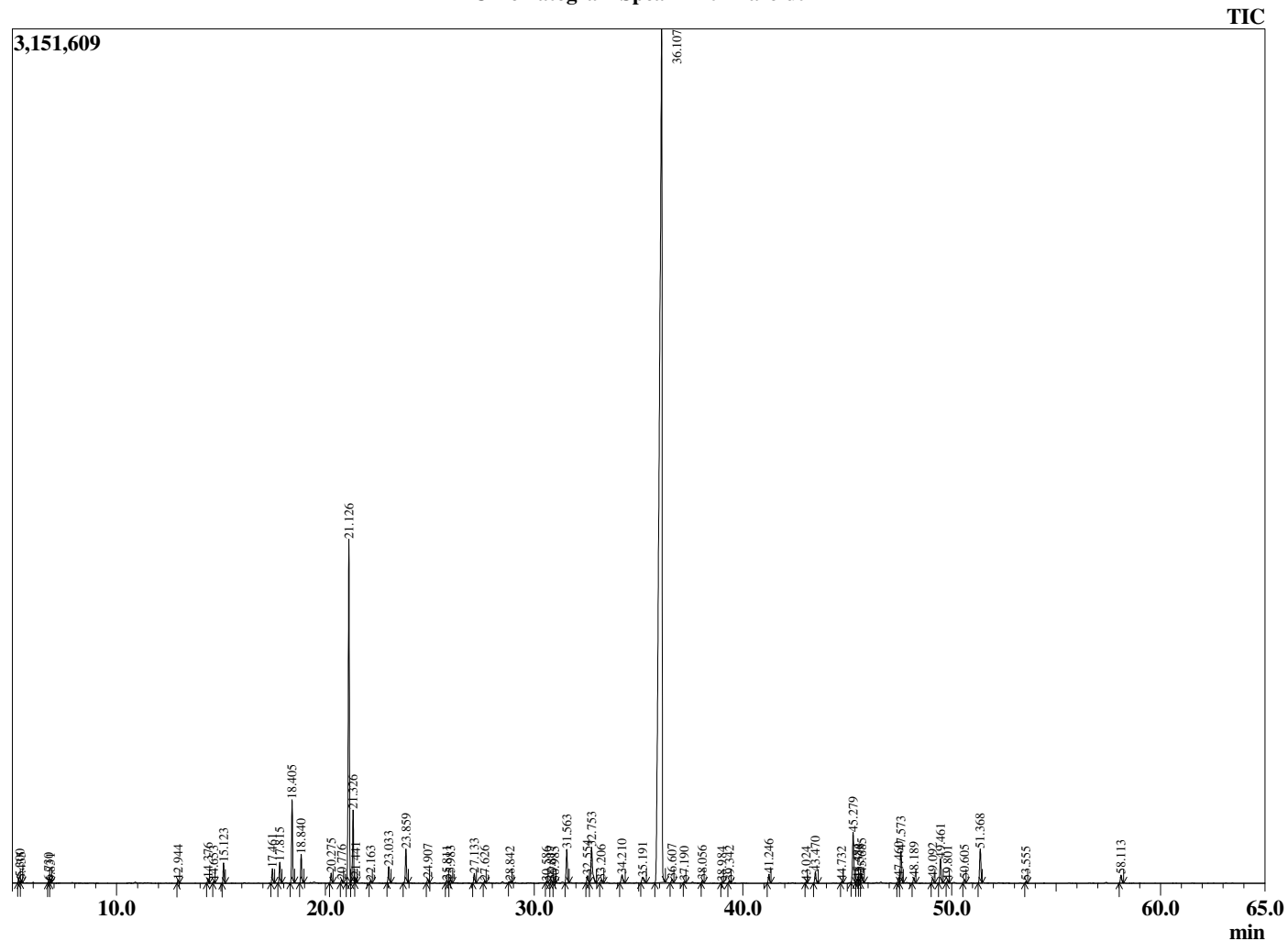


Peak Report TIC

R.Time	Name	Area%
5.300	3-Methylbutanal	0.10
5.435	2-Methylbutanal	0.05
6.730	1-Pentanol	0.03
6.831	2-Methyl butanol	0.02
12.944	2,5-Diethyltetrahydrofuran	0.09
14.376	Hashishene	0.13
14.653	alpha-Thujene	0.05
15.123	alpha-Pinene	0.56
17.461	Sabinene	0.42
17.815	beta-Pinene	0.63
18.405	Myrcene	2.43
18.840	3-Octanol	0.86
20.275	alpha-Terpinene	0.31
20.776	para-Cymene	0.11
21.126	Limonene	11.26
21.326	1,8-Cineole	2.23
21.441	cis-beta-Ocimene	0.16
22.163	trans-beta-Ocimene	0.08
23.033	gamma-Terpinene	0.52
23.859	trans-Sabinene hydrate	1.13
24.907	Terpinolene	0.14
25.811	Linalool	0.09
25.983	cis-Linalool oxide (furanoid)	0.12
27.133	3-Octyl acetate	0.32
27.626	cis-para-Menth-2-en-1-ol	0.06
28.842	trans-para-Menth-2-en-1-ol	0.05
30.586	para-Mentha-1,5-dien-8-ol	0.03
30.817	delta-Terpineol	0.09
30.985	Borneol	0.04
31.563	Terpinen-4-ol	1.17
32.554	alpha-Terpineol	0.29
32.753	(Z)-Dihydrocarvone	1.64
33.206	(E)-Dihydrocarvone	0.12
34.210	trans-Carveol	0.37
35.191	cis-Carveol	0.30
36.107	Carvone	65.73
36.607	Piperitone	0.15
37.190	Unidentified	0.04
38.056	Unidentified	0.08
38.984	Unidentified	0.03
39.342	Dihydroedulan II	0.08
41.246	Dihydrocarvyl acetate	0.31
43.024	Eugenol	0.03
43.470	Carveol acetate	0.42
44.732	alpha-Copaene	0.04
45.279	beta-Bourbonene	1.88
45.484	alpha-Bourbonene	0.14
45.578	beta-Elemene	0.14
45.685	(Z)-Jasmone	0.36
47.460	Unidentified	0.20
47.573	beta-Caryophyllene	1.23
48.189	beta-Copaene	0.21
49.092	beta-Ylangene	0.19
49.461	trans-beta-Farnesene	0.87
49.801	alpha-Humulene	0.08
50.605	Unidentified	0.12
51.368	Germacrene D	1.30
53.555	delta-Cadinene	0.05
58.113	Viridiflorol	0.32
		100.00

This report is valid for 1 year from the analyzed date.

Chromatogram Spearmint - Barefut



Comments:  
 The analysis of this Spearmint batch sample meets the expected chemical profile for authentic essential oil of *Mentha spicata*. No contamination or adulteration was detected.