

Sample Information

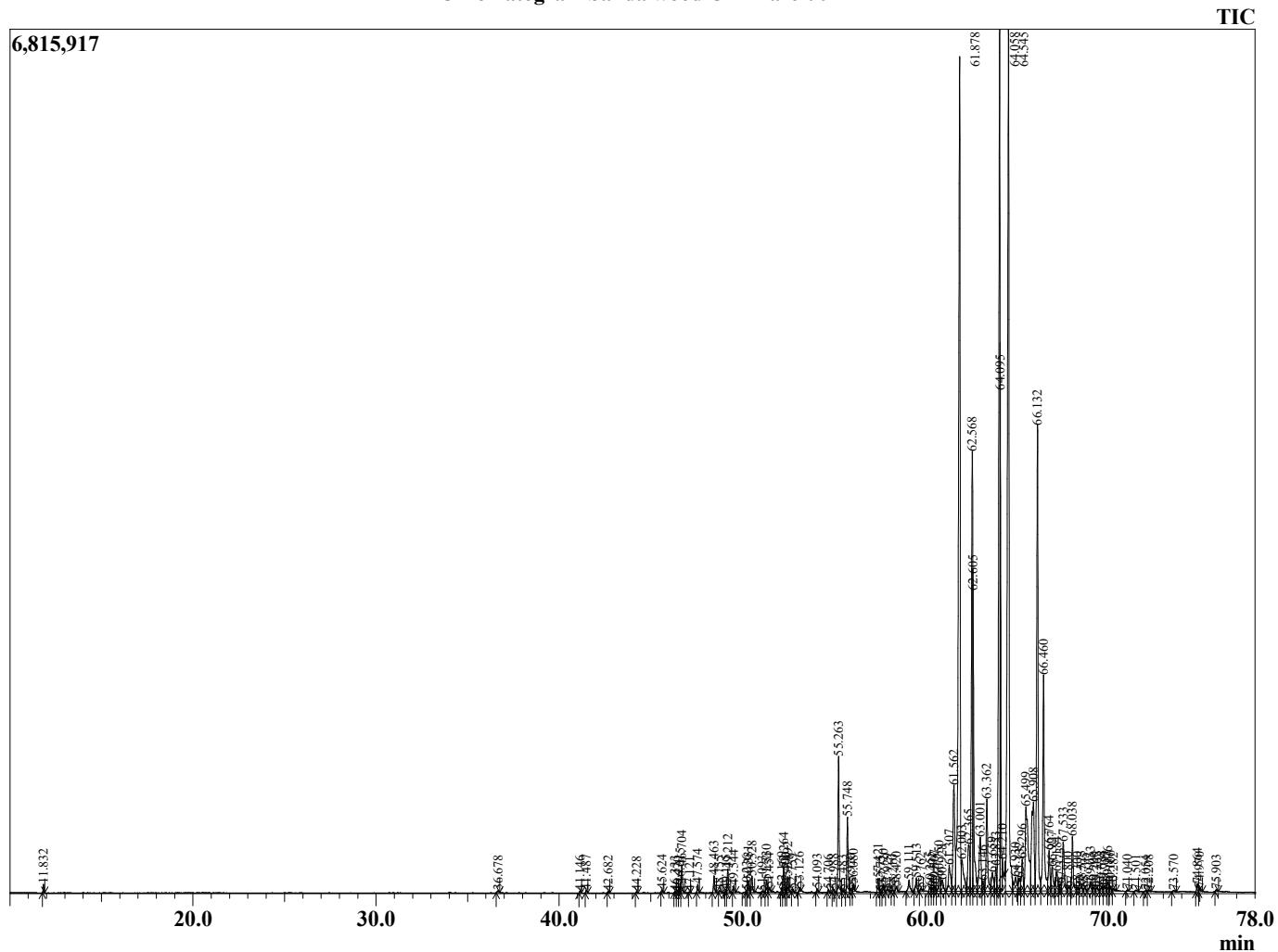
Analyzed by : Dr. Robert S. Pappas
 Analyzed : 6/26/2021 1:13:29 AM
 Sample Type : Essential Oil
 Sample Name : Sandalwood Oil - Barefut
 Sample ID : 0103
 Injection Volume : 0.10
 Instrument ID : GC-2



Peak Report TIC

R.Time	Name	Area%
11.832	Santene	0.07
36.678	Unidentified	0.03
41.146	delta-Elemene	0.03
41.487	Unidentified	0.04
42.682	Unidentified	0.02
44.228	Unidentified	0.02
45.624	alpha-Funebrene	0.04
46.333	cis-alpha-Bergamotene	0.02
46.470	Acora-3,7(14)-diene	0.01
46.615	alpha-Cedrene	0.10
46.704	alpha-Santalene	0.39
47.121	beta-Cedrene	0.01
47.574	trans-alpha-Bergamotene	0.11
48.463	epi-beta-Santalene	0.23
48.755	cis-beta-Farnesene	0.04
49.115	trans-beta-Farnesene	0.03
49.212	beta-Santalene	0.33
49.544	alpha-Acoradiene	0.09
50.236	beta-Acoradiene	0.03
50.331	gamma-Curcumene	0.17
50.528	Ar-Curcumene	0.24
51.093	Unidentified	0.02
51.330	Unidentified	0.19
51.454	Unidentified	0.08
52.169	beta-Bisabolene	0.06
52.264	beta-Curcumene	0.36
52.400	alpha-Alaskene	0.05
52.492	Sesquicineole	0.23
52.759	Unidentified	0.05
53.126	Sesquisabinene	0.05
54.093	beta-Sesquiphellandrene	0.05
54.706	8,14-Cedranoxide	0.04
54.988	Unidentified	0.05
55.263	trans-Nerolidol	1.90
55.483	Unidentified	0.03
55.748	Dendralasin	1.05
55.920	Unidentified	0.04
56.080	Unidentified	0.10
57.421	Guaiol	0.20
57.575	Unidentified	0.01
57.720	Unidentified	0.11
57.929	alpha-Santalene	0.05
58.210	Unidentified	0.02
58.420	Unidentified	0.09
59.111	Cedroxyde	0.24
59.513	alpha-Acorenol	0.23
59.762	beta-Acorenol	0.06
60.255	Unidentified	0.07
60.401	Unidentified	0.06
60.507	Unidentified	0.09
60.750	Unidentified	0.31
60.928	Unidentified	0.26
61.307	Bulnesol	0.68
61.562	beta-Bisabolol	2.32
61.878	cis-alpha-Santalol	15.62
62.003	Unidentified	0.90

Chromatogram Sandalwood Oil - Barefut



Comments:

The analysis of this Sandalwood batch sample meets the expected chemical profile for authentic essential oil of *Santalum spicatum*. No contamination or adulteration was detected. The results provided in this GCMS quality analysis reflect the chemical composition of the oil and lot referenced above on the date of analysis.

R.Time	Name	Area%
62.365	Unidentified	1.06
62.568	epi-alpha-Bisabolol	7.06
62.605	trans-alpha-trans-Bergamotol	2.95
63.001	Unidentified	1.29
63.146	Unidentified	0.17
63.362	cis-epi-beta-Santalol	1.69
63.659	trans-alpha-trans-Bergamotol	0.48
63.853	Unidentified	0.38
64.058	(2E,6E)-Farnesol	13.14
64.095	cis-beta-Santalol	3.54
64.210	Unidentified	0.09
64.545	cis-Nuciferol	16.66
64.930	Unidentified	0.47
65.132	trans,trans-Farnesal	0.29
65.296	trans-beta-Santalol	0.58
65.499	Unidentified	3.07
65.908	Santalol acetate isomer	2.67
66.132	trans-Nuciferol	7.51
66.460	cis-Lanceol	3.78
66.764	Unidentified	0.74
66.927	Unidentified	0.53
67.184	Unidentified	0.42
67.373	Lanceol isomer	0.13
67.533	Unidentified	1.10
67.800	Unidentified	0.11
68.038	Lanceol isomer	0.91
68.300	Unidentified	0.07
68.523	Unidentified	0.12
68.705	Unidentified	0.07
69.033	Unidentified	0.20
69.200	Unidentified	0.07
69.365	Unidentified	0.07
69.638	Unidentified	0.09
69.791	Unidentified	0.12
69.976	Unidentified	0.15
70.106	Farnesyl acetate	0.07
70.282	Unidentified	0.04
71.040	Unidentified	0.02
71.501	Unidentified	0.03
72.054	Unidentified	0.02
72.208	Unidentified	0.02
73.570	Unidentified	0.03
74.864	Unidentified	0.13
74.970	Unidentified	0.07
75.903	Unidentified	0.03
96.364	Unidentified	0.03
		100.00