

Sample Information

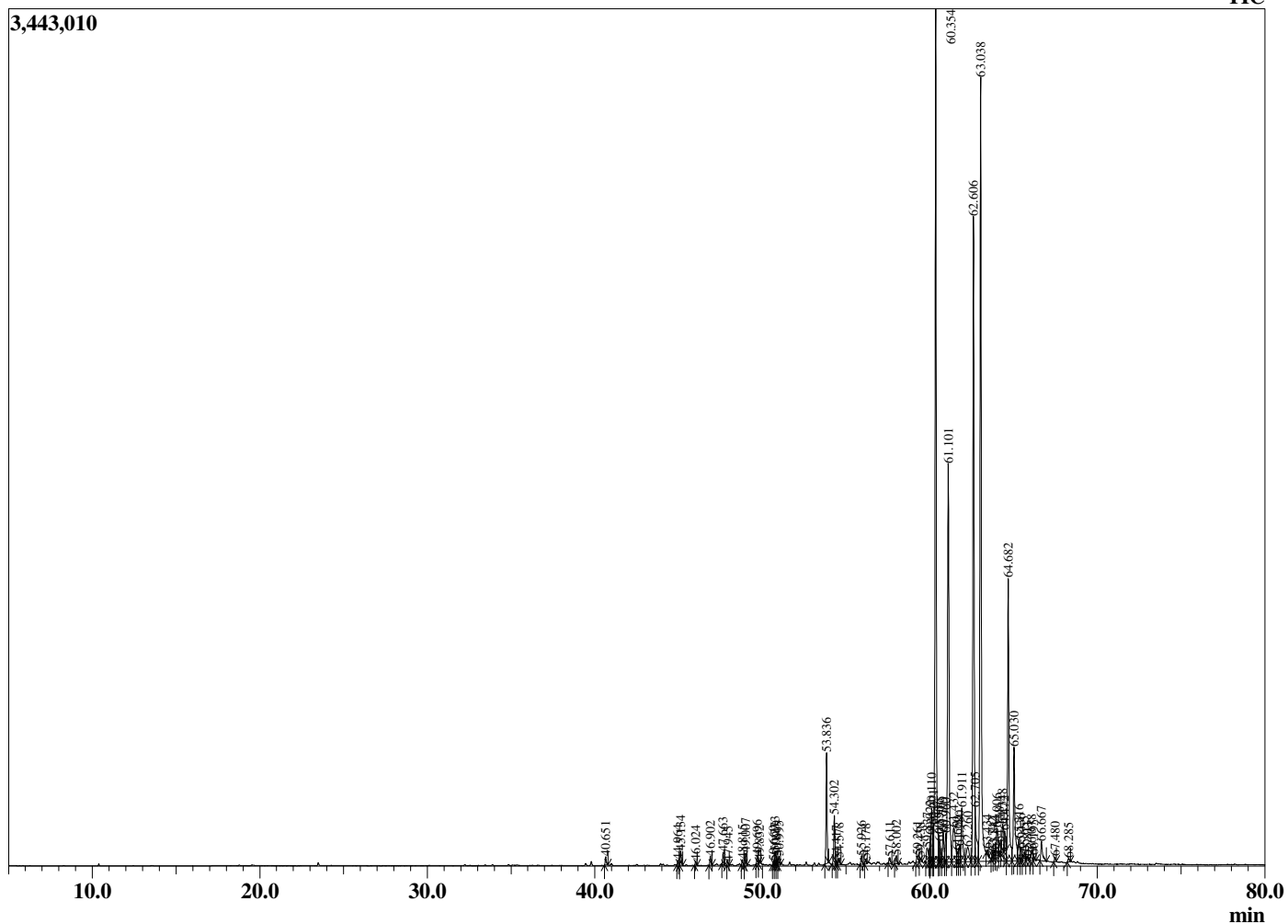
Analyzed by : Dr. Robert S. Pappas
 Analyzed : 12/12/2019 7:12:08 AM
 Sample Type : Essential Oil
 Sample Name : Sandalwood - Barefut
 Sample ID : 0101
 Injection Volume : 0.10
 Instrument ID: : GC-3



Peak Report TIC

R.Time	Name	Area%
40.651	Eugenol	0.17
44.964	alpha-Cedrene	0.10
45.134	alpha-Santalene	0.29
46.024	trans-alpha-Bergamotene	0.07
46.902	epi-beta-Santalene	0.18
47.663	beta-Santalene	0.23
47.945	alpha-Acoradiene	0.07
48.815	gamma-Curcumene	0.10
49.007	Ar-Curcumene	0.24
49.696	Unidentified	0.15
49.832	Unidentified	0.05
50.669	beta-Bisabolene	0.08
50.773	beta-Curcumene	0.28
50.849	Unidentified	0.15
50.995	Unidentified	0.21
53.836	trans-Nerolidol	2.11
54.302	Dendralasin	1.03
54.417	Unidentified	0.06
54.578	Unidentified	0.15
55.926	Guaiol	0.18
56.178	Unidentified	0.11
57.611	Unidentified	0.17
58.002	alpha-Acorenol	0.21
59.261	Cubenol	0.20
59.438	Unidentified	0.08
59.837	Bulnesol	0.49
60.022	Unidentified	0.48
60.110	beta-Bisabolol	1.27
60.221	Unidentified	0.65
60.354	Z-alpha-Santalol	19.10
60.536	Unidentified	0.57
60.590	Unidentified	0.37
60.799	Unidentified	0.77
60.960	cis-alpha-Bisabolol	0.64
61.101	trans-alpha-Bisabolol	11.14
61.432	E-alpha-Santalol + (Z)-alpha-trans-Bergamot	1.75
61.660	Unidentified	0.25
61.780	Unidentified	0.36
61.911	epi-beta-Santalol	1.56
62.260	Unidentified	0.78
62.606	(2E,6E)-Farnesol	14.69
62.705	Z-beta-Santalol	1.28
63.038	(Z)-Nuciferol	21.53
63.434	Unidentified	0.10
63.742	Farnesal	0.12
63.844	E-beta-Santalol	0.14
64.006	Unidentified	0.83
64.148	Unidentified	0.31
64.348	Unidentified	0.92
64.472	E-alpha-trans-Bergamotol	0.47
64.682	(E)-Nuciferol	6.84
65.030	cis-Lanceol	3.44
65.316	Unidentified	0.60
65.436	Unidentified	0.30
65.655	Unidentified	0.31
65.811	Unidentified	0.13
66.078	Unidentified	0.31
66.195	Unidentified	0.12
66.667	Lanceol isomer	0.57
67.480	Unidentified	0.10
68.285	Unidentified	0.09
		100.00

Chromatogram Sandalwood - Barefut



Comments:

The analysis of this Sandalwood, Western Australia batch sample meets the expected chemical profile for authentic essential oil of *Santalum spicatum*. No contamination or adulteration was detected. The results provided in this GCMS quality analysis reflect the chemical composition of the oil and lot referenced above on the date of analysis.