

Sample Information

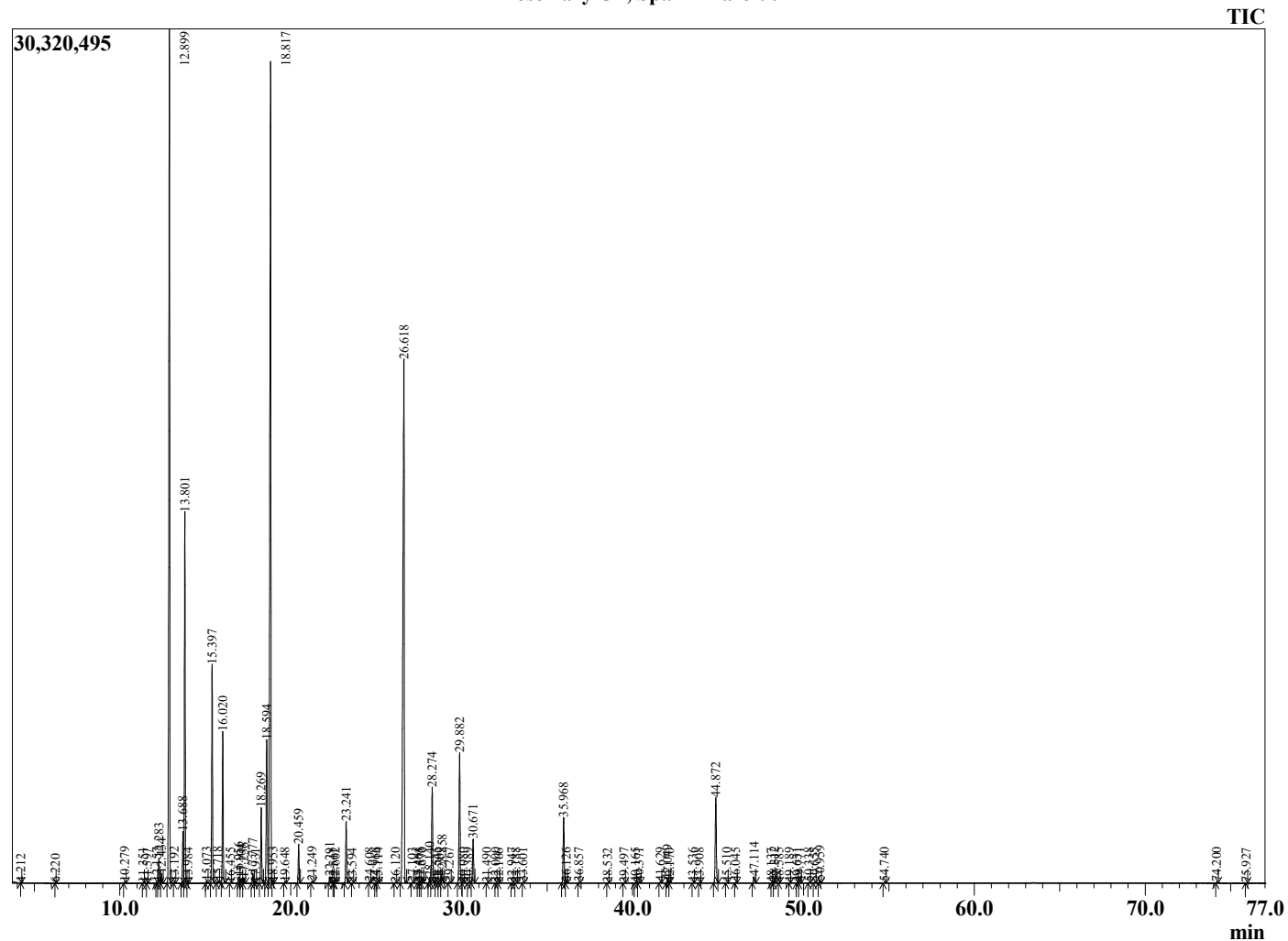
Analyzed by : Dr. Robert S. Pappas
 Analyzed : 7/8/2022 5:24:55 PM
 Sample Type : Essential Oil
 Sample Name : Rosemary Oil, Spain - Barefut
 Sample ID : 0115
 Injection Volume : 0.10
 Instrument ID : GC-3



Peak Report TIC

R.Time	Name	Area%
4.212	3-Methylbutanal	0.00
6.220	Toluene	0.00
10.279	Cyclofenchene	0.02
11.351	Bornylene	0.01
11.597	2,6-Dimethyl 4-octene	0.00
12.157	Hashishene	0.01
12.283	Tricyclene	0.47
12.434	alpha-Thujene	0.18
12.899	alpha-Pinene	20.40
13.192	beta-Fenchene	0.02
13.688	alpha-Fenchene	1.09
13.801	Camphene	7.64
13.984	Thuja-2,4(10)-diene	0.01
15.073	Sabinene	0.04
15.397	beta-Pinene	4.59
15.718	Unidentified	0.05
16.020	Myrcene	3.11
16.455	3-Octanol	0.01
16.956	Pseudolimonene	0.14
17.104	alpha-Phellandrene	0.10
17.256	delta-3-Carene	0.11
17.777	alpha-Terpinene	0.22
17.931	ortho-Cymene	0.01
18.269	para-Cymene	1.70
18.594	Limonene	4.04
18.817	1,8-cineole	23.01
18.953	cis-beta-Ocimene	0.03
19.648	trans-beta-Ocimene	0.02
20.459	gamma-Terpinene	0.86
21.249	trans-Sabinene hydrate	0.04
22.291	Terpinolene	0.15
22.511	Fenchone	0.00
22.602	para-Cymenene	0.01
23.241	Linalool	1.45
23.594	Nonanal	0.00
24.608	alpha-Fenchol	0.02
24.966	cis-para-Menth-2-en-1-ol	0.00
25.114	alpha-Campholenal	0.01
26.120	trans-Pinocarveol	0.01
26.618	Camphor	18.01
27.103	Camphene hydrate	0.02
27.461	Pinocamphone	0.01
27.575	Pinocarvone	0.01
27.670	Isoborneol	0.02
28.140	delta-Terpineol	0.14
28.274	Borneol	2.43
28.545	Isopinocampnone	0.01
28.709	Unidentified	0.01
28.858	Terpinen-4-ol	0.35
29.267	para-Cymen-8-ol	0.02
29.882	alpha-Terpineol	3.47
30.080	Estragole	0.01
30.389	Unidentified	0.01
30.671	Verbenone	1.09
31.490	Unidentified	0.01
32.000	Citronellol	0.01
32.166	Bornyl formate	0.00
32.947	Unidentified	0.01
33.188	Carvone	0.01
33.601	Geraniol	0.01
35.968	Bornyl acetate	1.73
36.126	Isobornyl acetate	0.02

Rosemary Oil, Spain - Barefut



Comments:

The analysis of this Rosemary Oil batch sample meets the expected chemical authentic essential oil of Rosmarinus officinalis. No contamination or adulter detected. The results provided in this GCMS quality analysis reflect the chem composition of the oil and lot referenced above on the date of analysis.

R.Time	Name	Area%
36.857	Unidentified	0.01
38.532	Myrtenyl acetate	0.00
39.497	Unidentified	0.01
40.165	alpha-Cubebene	0.01
40.371	Eugeol	0.03
41.629	alpha-Ylangene	0.03
42.049	alpha-Copaene	0.08
42.170	Unidentified	0.00
43.536	Methyleugenol	0.01
43.908	cis-beta-Caryophyllene	0.01
44.872	beta-Caryophyllene	2.35
45.510	beta-Copaene	0.01
46.045	Aromadendrene	0.02
47.114	alpha-Humulene	0.17
48.137	10-beta-H-Cadina-1(6),4-diene	0.00
48.312	trans-Cadina-1(6),4-diene	0.05
48.585	alpha-Amorphene	0.00
49.189	beta-Selinene	0.00
49.631	alpha-Selinene	0.01
49.771	alpha-Murolene	0.01
50.338	beta-Bisabolene	0.01
50.655	gamma-Cadinene	0.03
50.959	delta-Cadinene	0.07
54.740	Caryophyllene oxide	0.03
74.200	meta-Camphorene	0.02
75.927	para-Camphorene	0.01
		100.00