

Sample Information

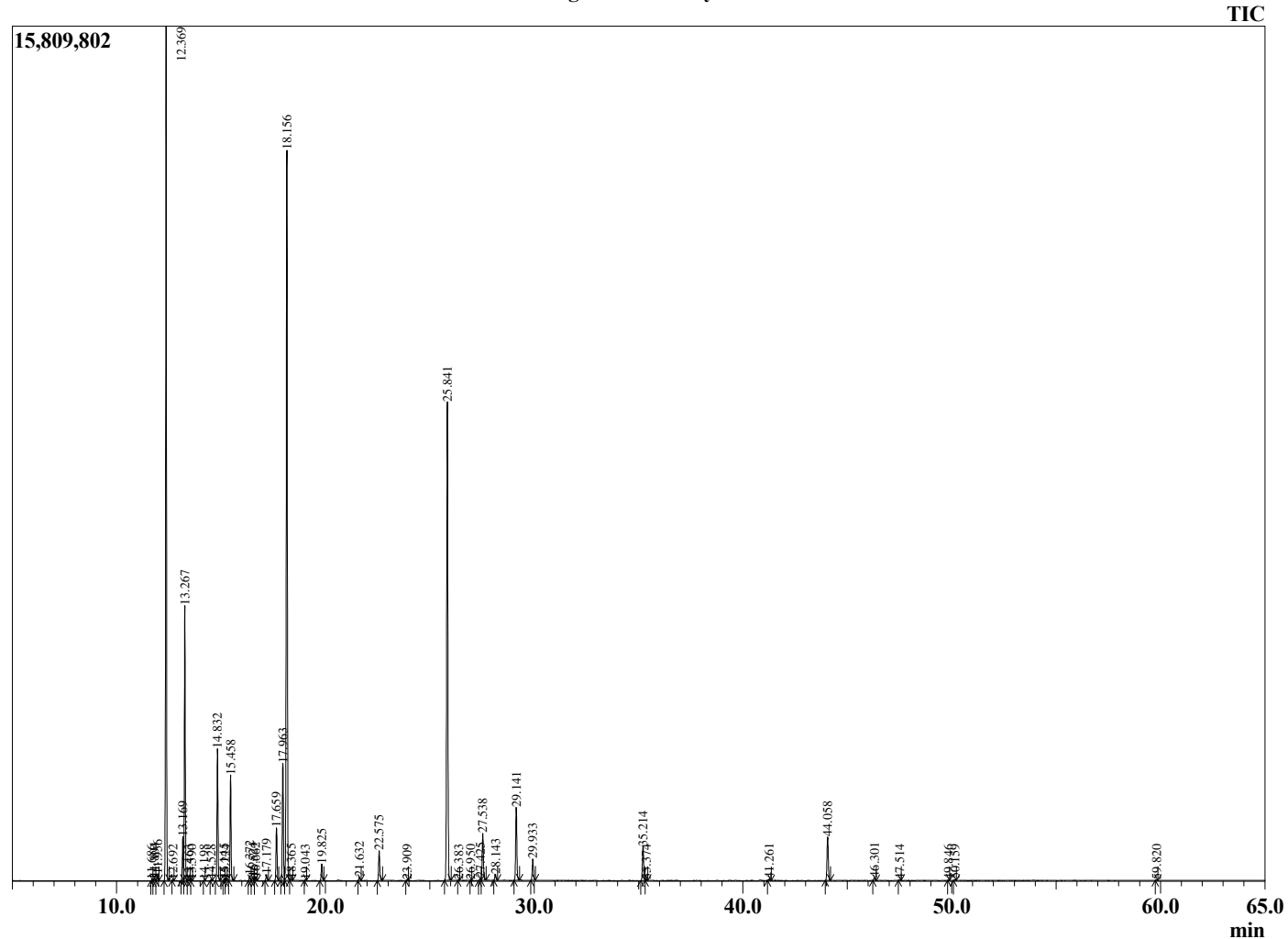
Analyzed by : Dr. Robert S. Pappas
 Analyzed : 3/23/2021 1:07:31 PM
 Sample Type : Essential Oil
 Sample Name : Rosemary - Barefut
 Sample ID : 0114
 Injection Volume : 0.10
 Instrument ID: : GC-4



Peak Report TIC

R.Time	Name	Area%
11.686	Hashishene	0.02
11.804	Tricyclene	0.07
11.956	alpha-Thujene	0.16
12.369	alpha-Pinene	23.46
12.692	Unidentified	0.01
13.169	alpha-Fenchene	1.26
13.267	Camphene	7.82
13.463	Thuja-2,4(10)diene	0.02
13.590	Unidentified	0.01
14.198	Unidentified	0.01
14.528	Sabinene	0.03
14.832	beta-Pinene	4.10
15.145	Unidentified	0.04
15.224	3-Octanone	0.02
15.458	Myrcene	3.20
16.372	Pseudolimonene	0.16
16.524	alpha-Phellandrene	0.10
16.662	delta-3-Carene	0.09
17.179	alpha-Terpinene	0.20
17.659	para-Cymene	1.77
17.963	Limonene	3.98
18.156	1,8-Cineole	24.68
18.365	(Z)-beta-Ocimene	0.05
19.043	(E)-beta-Ocimene	0.02
19.825	gamma-Terpinene	0.55
21.632	Terpinolene	0.13
22.575	Linalool	1.08
23.909	alpha-Fenchol	0.02
25.841	Camphor	17.80
26.383	trans-beta-Terpineol	0.01
26.950	Isoborneol	0.01
27.425	delta-Terpineol	0.10
27.538	Borneol	1.80
28.143	Terpinen-4-ol	0.23
29.141	alpha-Terpineol	2.73
29.933	Verbenone	0.81
35.214	Bornyl acetate	1.36
35.374	Isobornyl acetate	0.03
41.261	alpha-Copaene	0.06
44.058	trans-beta-Caryophyllene	1.78
46.301	alpha-Humulene	0.11
47.514	trans-Cadina-1(6),4-diene	0.03
49.846	gamma-Cadinene	0.01
50.159	delta-Cadinene	0.04
59.820	alpha-Bisabolol	0.02
		100.00

Chromatogram Rosemary - Barefut



Comments:

The analysis of this Rosemary, Spain batch sample meets the expected chemical profile for authentic essential oil of *Rosmarinus officinalis*. No contamination or adulteration was detected. The results provided in this GCMS quality analysis reflect the chemical composition of the oil and lot referenced above on the date of analysis.