

Sample Information

Analyzed by : Dr. Robert S. Pappas
 Analyzed : 6/11/2019 12:52:44 AM
 Sample Type : Essential Oil
 Sample Name : Rosemary - Barefut
 Sample ID : 0109
 Injection Volume : 0.10
 Instrument ID : GC-3

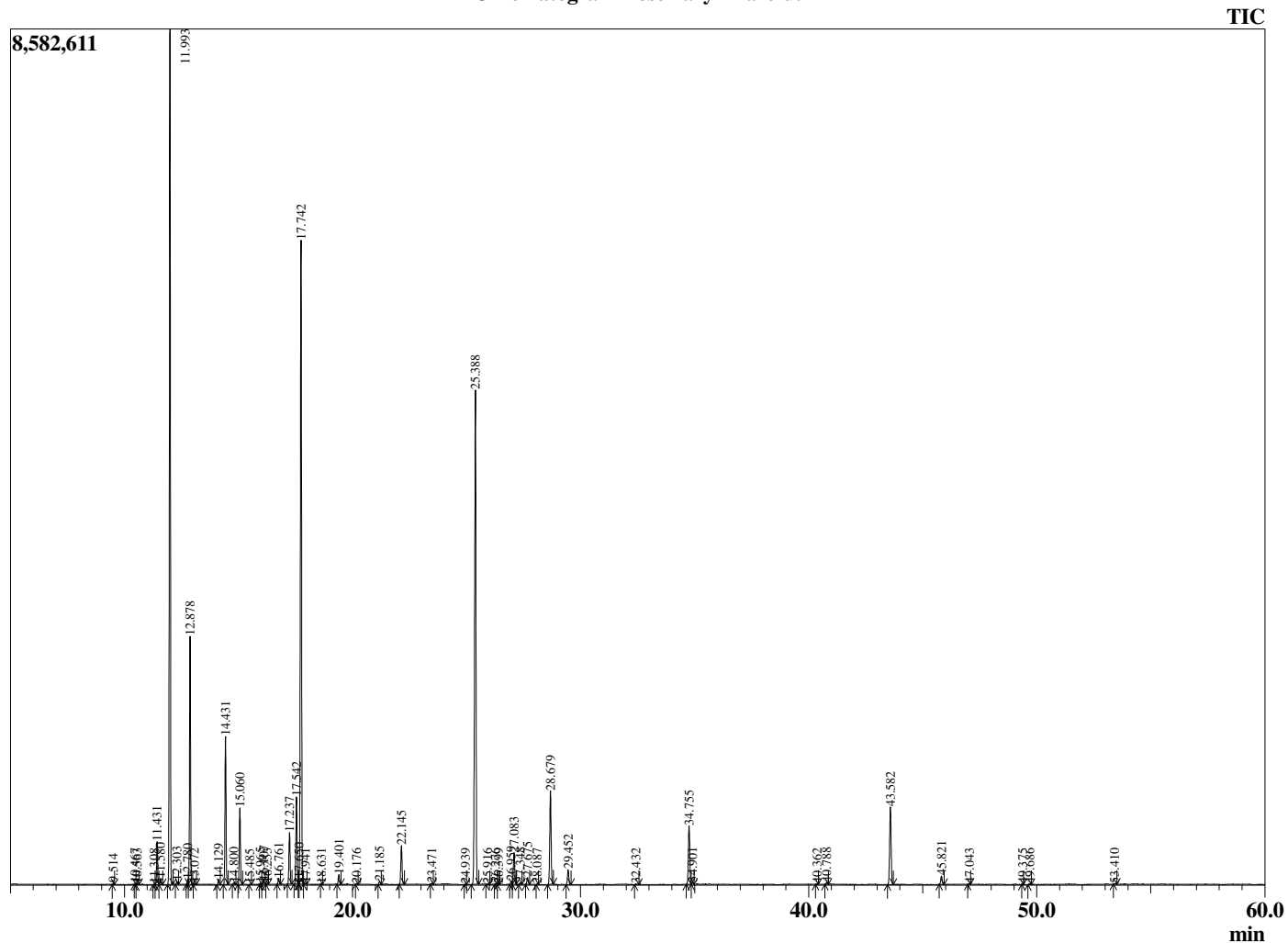


Peak Report TIC

R.Time	Name	Area%
9.514	Cyclofenchene	0.04
10.467	Bornylene	0.03
10.563	Unidentified	0.03
11.308	Hashishene	0.02
11.431	Tricyclene	1.18
11.580	alpha-Thujene	0.18
11.993	alpha-Pinene	24.12
12.303	beta-Fenchene	0.08
12.780	alpha-Fenchene	0.14
12.878	Camphene	7.09
13.072	Thuja-2,4(10)diene	0.03
14.129	Sabinene	0.15
14.431	beta-Pinene	4.54
14.800	3-Octanone	0.06
15.060	Myrcene	2.40
15.485	3-Octanol	0.01
15.965	Pseudolimonene	0.04
16.107	alpha-Phellandrene	0.11
16.253	delta-3-Carene	0.03
16.761	alpha-Terpinene	0.20
17.237	para-Cymene	1.73
17.542	Limonene	2.95
17.650	beta-Phellandrene	0.09
17.742	1,8-cineole	21.27
17.941	cis-beta-Ocimene	0.02
18.631	trans-beta-Ocimene	0.01
19.401	gamma-Terpinene	0.35
20.176	trans-Sabinene hydrate	0.02
21.185	Terpinolene	0.11
22.145	Linalool	1.37
23.471	alpha-Fenchol	0.04
24.939	trans-Pinocarveol	0.01
25.388	Camphor	19.49
25.916	trans-beta-Terpineol	0.03
26.276	Pinocamphone	0.04
26.399	Pinocarvone	0.02
26.959	delta-Terpineol	0.11
27.083	Borneol	1.21
27.348	Isopinocamphone	0.06
27.675	Terpinen-4-ol	0.26
28.087	para-Cymen-8-ol	0.01
28.679	alpha-Terpineol	3.55
29.452	Verbenone	0.57
32.432	Geraniol	0.02
34.755	Bornyl acetate	2.33
34.901	Isobornyl acetate	0.07
40.362	Unidentified	0.02
40.788	alpha-Copaene	0.06
43.582	beta-Caryophyllene	3.26
45.821	alpha-Humulene	0.34
47.043	trans-Cadina-1(6),4-diene	0.03
49.375	gamma-Cadinene	0.01
49.686	delta-Cadinene	0.04
53.410	Caryophyllene oxide	0.02
		100.00

This report is valid for 1 year from the analyzed date.

Chromatogram Rosemary - Barefut



Comments:

The analysis of this Rosemary Oil batch sample meets the expected chemical profile for authentic essential oil of *Rosmarinus officinalis*. No contamination or adulteration was detected.