

Sample Information

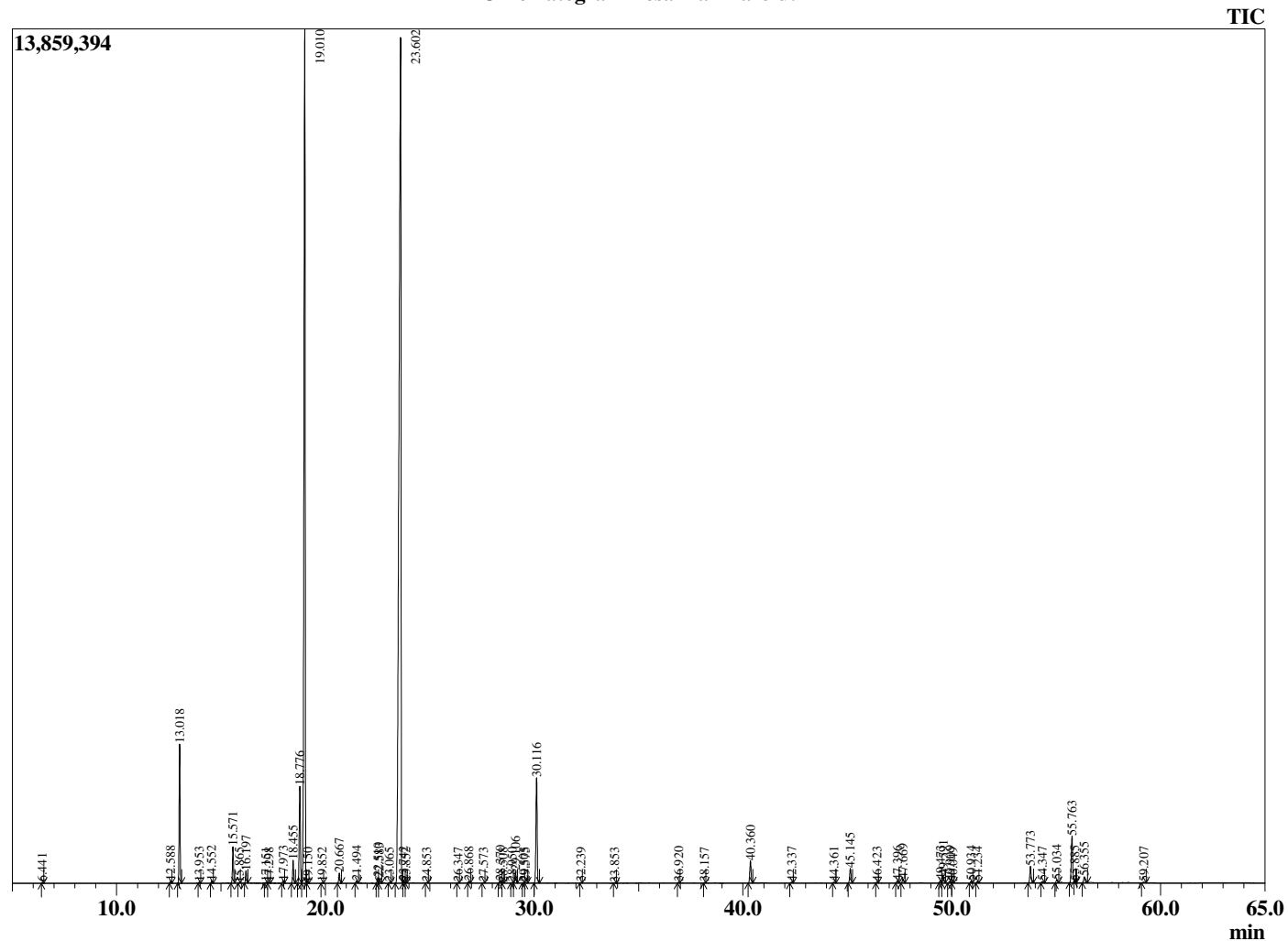
Analyzed by : Dr. Robert S. Pappas  
 Analyzed : 5/7/2020 8:12:28 AM  
 Sample Type : Essential Oil  
 Sample Name : Rosalina - Barefut  
 Sample ID : 0103  
 Injection Volume : 0.10  
 Instrument ID: GC-3



Peak Report TIC

R.Time	Name	Area%
6.441	Methyl 2-methylbutyrate	0.02
12.588	alpha-Thujene	0.06
13.018	alpha-Pinene	3.74
13.953	Camphene	0.03
14.552	Benzaldehyde	0.06
15.571	beta-Pinene	1.04
15.865	6-Methyl hept-5-en-2-one	0.01
16.197	Myrcene	0.36
17.151	Pseudolimonene	0.03
17.298	alpha-Phellandrene	0.03
17.973	alpha-Terpinene	0.07
18.455	para-Cymene	0.66
18.776	Limonene	3.33
19.010	1,8-cineole	30.56
19.150	cis-beta-Ocimene	0.02
19.852	trans-beta-Ocimene	0.02
20.667	gamma-Terpinene	0.33
21.494	cis-Linalool oxide (furanoid)	0.07
22.510	Terpinolene	0.19
22.583	trans-Linalool oxide (furanoid)	0.16
23.065	Methyl benzoate	0.03
23.602	Linalool	49.28
23.742	Hotrienol	0.05
23.852	Unidentified	0.01
24.853	alpha-Fenchol	0.02
26.347	trans-Pinocarveol	0.02
26.868	Isopulegol	0.05
27.573	Neoisopulegol	0.02
28.370	delta-Terpineol	0.08
28.508	Borneol	0.02
28.950	Unidentified	0.02
29.106	Terpinen-4-ol	0.40
29.505	para-Cymen-8-ol	0.02
29.575	Unidentified	0.02
30.116	alpha-Terpineol	3.78
32.239	Citronellol	0.03
33.853	Geraniol	0.02
36.920	Unidentified	0.02
38.157	delta-Terpinyol acetate	0.01
40.360	alpha-Terpinyol acetate	0.81
42.337	alpha-Copaene	0.03
44.361	alpha-Gurjunene	0.04
45.145	beta-Caryophyllene	0.56
46.423	Aromadendrene	0.03
47.396	alpha-Humulene	0.08
47.669	Alloaromadendrene	0.15
49.473	beta-Selinene	0.11
49.591	Viridiflorene (Ledene)	0.30
49.909	alpha-Selinene	0.08
50.049	alpha-Muurolene	0.02
50.934	gamma-Cadinene	0.06
51.234	delta-Cadinene	0.05
53.773	trans-Nerolidol	0.62
54.347	Palustrol	0.06
55.034	Caryophyllene oxide	0.11
55.763	Viridiflorol	1.92
55.885	Unidentified	0.01
56.355	Ledol	0.23
59.207	alpha-Eudesmol	0.04
		100.00

Chromatogram Rosalina - Barefut



Comments:

The analysis of this Rosalina batch sample meets the expected chemical profile for authentic essential oil of *Melaleuca ericifolia*. No contamination or adulteration was detected. The results provided in this GCMS quality analysis reflect the chemical composition of the oil and lot referenced above on the date of analysis.