

Sample Information

Analyzed by : Dr. Robert S. Pappas
 Analyzed : 3/29/2019 1:38:50 AM
 Sample Type : Essential Oil
 Sample Name : Nutmeg - Barefut
 Sample ID : 0106
 Injection Volume : 0.10
 Instrument ID : GC-3

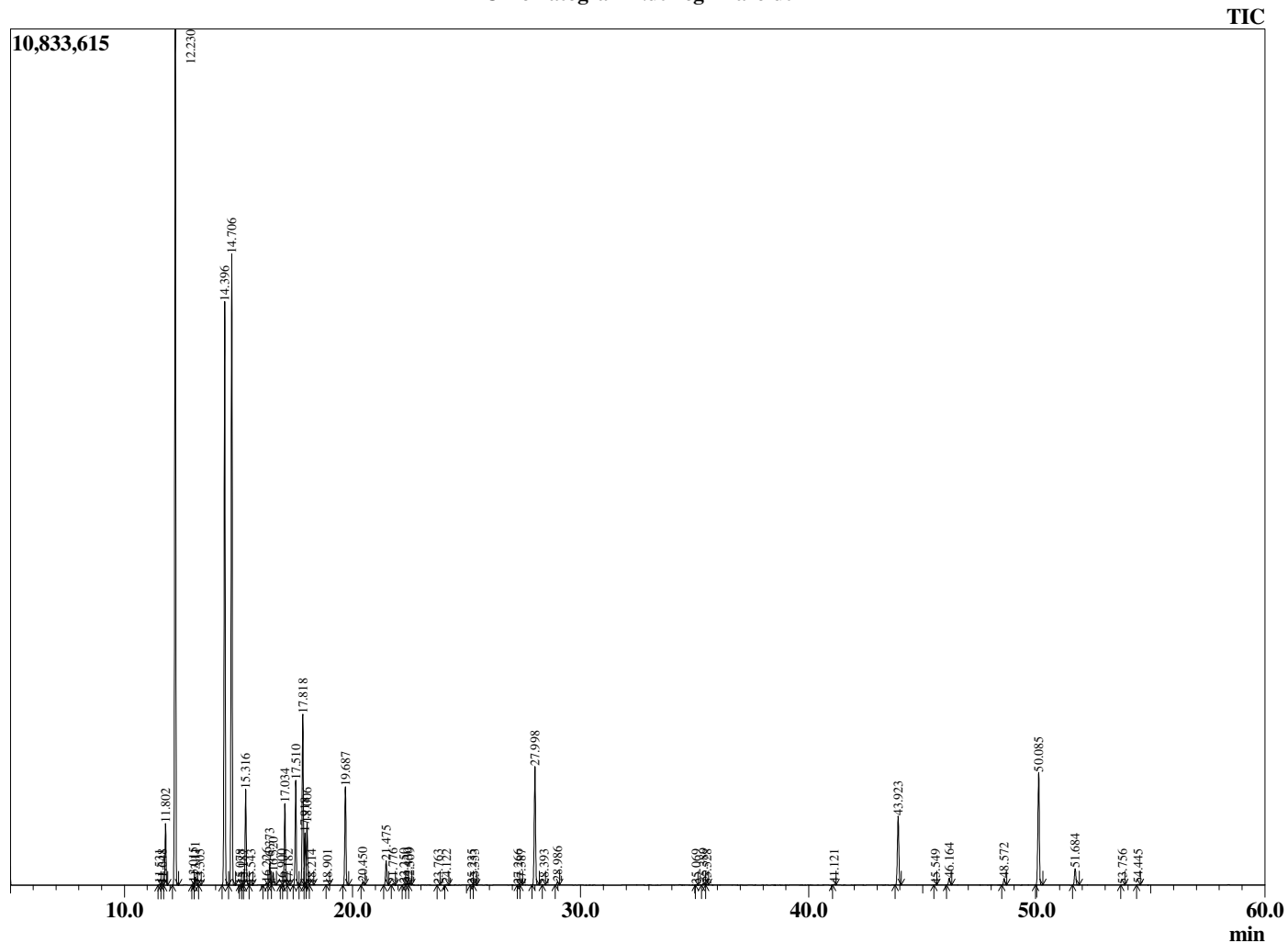


Peak Report TIC

R.Time	Name	Area%
11.531	Hashishene	0.03
11.648	Tricyclene	0.01
11.802	alpha-Thujene	1.69
12.230	alpha-Pinene	24.65
13.015	alpha-Fenchene	0.07
13.111	Camphene	0.24
13.305	Thuja-2,4(10)diene	0.01
14.396	Sabinene	17.57
14.706	beta-Pinene	19.15
15.078	3-para-Menthene	0.01
15.187	Unidentified	0.01
15.316	Myrcene	2.93
15.543	Unidentified	0.02
16.226	Pseudolimonene	0.07
16.373	alpha-Phellandrene	0.66
16.520	delta-3-Carene	0.40
16.900	1,4-Cineole	0.01
17.034	alpha-Terpinene	2.50
17.182	ortho-Cymene	0.01
17.510	para-Cymene	3.26
17.818	Limonene	5.61
17.918	beta-Phellandrene	1.58
18.006	1,8-Cineole	1.92
18.214	cis-beta-Ocimene	0.02
18.901	trans-beta-Ocimene	0.01
19.687	gamma-Terpinene	3.26
20.450	trans-Sabinene hydrate	0.09
21.475	Terpinolene	0.83
21.776	para-Cymenene	0.04
22.250	Unidentified	0.04
22.430	Linalool	0.06
22.509	cis-Sabinene hydrate	0.06
23.763	alpha-Fenchol	0.01
24.122	Unidentified	0.03
25.235	trans-Pinocarveol	0.02
25.353	trans-para-Menth-2-en-1-ol	0.03
27.266	delta-Terpineol	0.01
27.387	Borneol	0.01
27.998	Terpinen-4-ol	4.35
28.393	para-Cymen-8-ol	0.01
28.986	alpha-Terpineol	0.11
35.069	Bornyl acetate	0.01
35.389	Safrole	0.07
35.528	Unidentified	0.02
41.121	alpha-Copaene	0.02
43.923	beta-Caryophyllene	2.78
45.549	trans-Isoeugenol	0.01
46.164	alpha-Humulene	0.28
48.572	trans-Methylisoeugenol	0.25
50.085	Myristicin	4.48
51.684	Elemicin	0.65
53.756	Unidentified	0.02
54.445	Methoxyeugenol	0.02
100.000		100.00

This report is valid for 1 year from the analyzed date.

Chromatogram Nutmeg - Barefut



Comments:

The analysis of this Nutmeg Oil batch sample meets the expected chemical profile for authentic essential oil of *Myristica fragrans*. No contamination or adulteration was detected.