

Sample Information

Analyzed by : Dr. Robert S. Pappas
 Analyzed : 8/27/2019 12:19:58 AM
 Sample Type : Essential Oil
 Sample Name : Niaouli - Barefut
 Sample ID : 0103
 Injection Volume : 0.10
 Instrument ID : GC-4

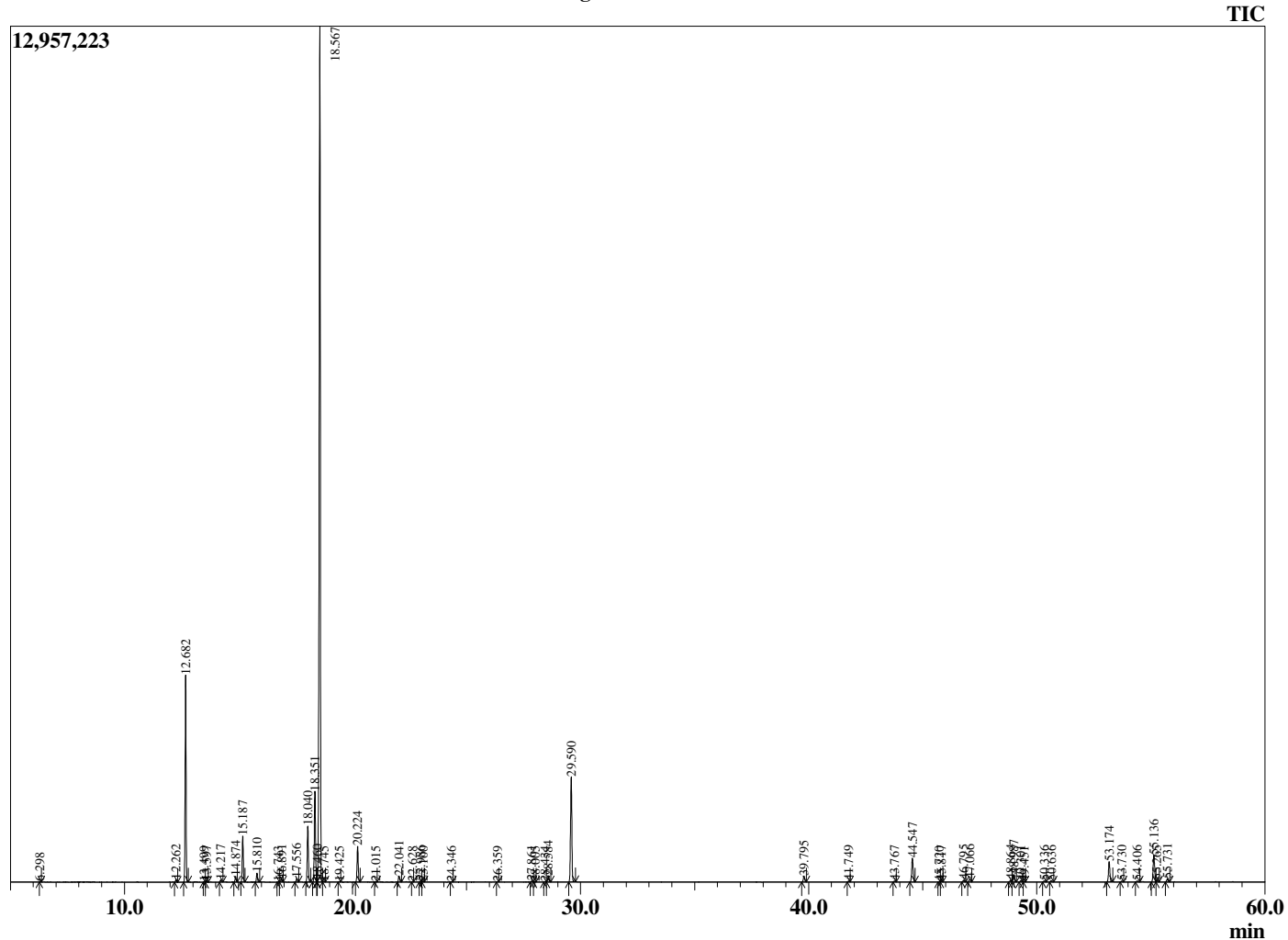


Peak Report TIC

R.Time	Name	Area%
6.298	Methyl 2-methylbutyrate	0.02
12.262	alpha-Thujene	0.13
12.682	alpha-Pinene	11.06
13.499	alpha-Fenchene	0.02
13.597	Camphene	0.07
14.217	Benzaldehyde	0.13
14.874	Sabinene	0.33
15.187	beta-Pinene	2.65
15.810	Myrcene	0.54
16.743	Pseudolimonene	0.03
16.891	alpha-Phellandrene	0.17
17.556	alpha-Terpinene	0.23
18.040	para-Cymene	3.49
18.351	Limonene	6.02
18.460	beta-Phellandrene	0.07
18.567	1,8-cineole	56.05
18.745	cis-beta-Ocimene	0.04
19.425	trans-beta-Ocimene	0.03
20.224	gamma-Terpinene	2.27
21.015	trans-Sabinene hydrate	0.03
22.041	Terpinolene	0.40
22.628	Methyl benzoate	0.01
22.986	Linalool	0.08
23.100	cis-Sabinene hydrate	0.02
24.346	alpha-Fenchol	0.02
26.359	Unidentified	0.02
27.861	delta-Terpineol	0.08
28.005	Unidentified	0.02
28.434	Unidentified	0.02
28.584	Terpinen-4-ol	0.42
29.590	alpha-Terpineol	7.45
39.795	alpha-Terpinyl acetate	0.44
41.749	Unidentified	0.06
43.767	alpha-Gurjunene	0.06
44.547	beta-Caryophyllene	1.86
45.720	Unidentified	0.03
45.817	Aromadendrene	0.06
46.795	alpha-Humulene	0.14
47.066	Alloaromadendrene	0.23
48.864	beta-Selinene	0.15
48.987	Viridiflorene (Ledene)	0.59
49.301	alpha-Selinene	0.09
49.451	Unidentified	0.02
50.336	gamma-Cadinene	0.09
50.636	delta-Cadinene	0.11
53.174	trans-Nerolidol	1.57
53.730	Palustrol	0.06
54.406	Caryophyllene oxide	0.09
55.136	Viridiflorol	2.15
55.265	Guaiol	0.11
55.731	Ledol	0.23
		100.00

This report is valid for 1 year from the analyzed date.

Chromatogram Niaouli - Barefut



Comments:

The analysis of this Niaouli batch sample meets the expected chemical profile for authentic essential oil of *Melaleuca quinquenervia*. No contamination or adulteration was detected.