

Sample Information

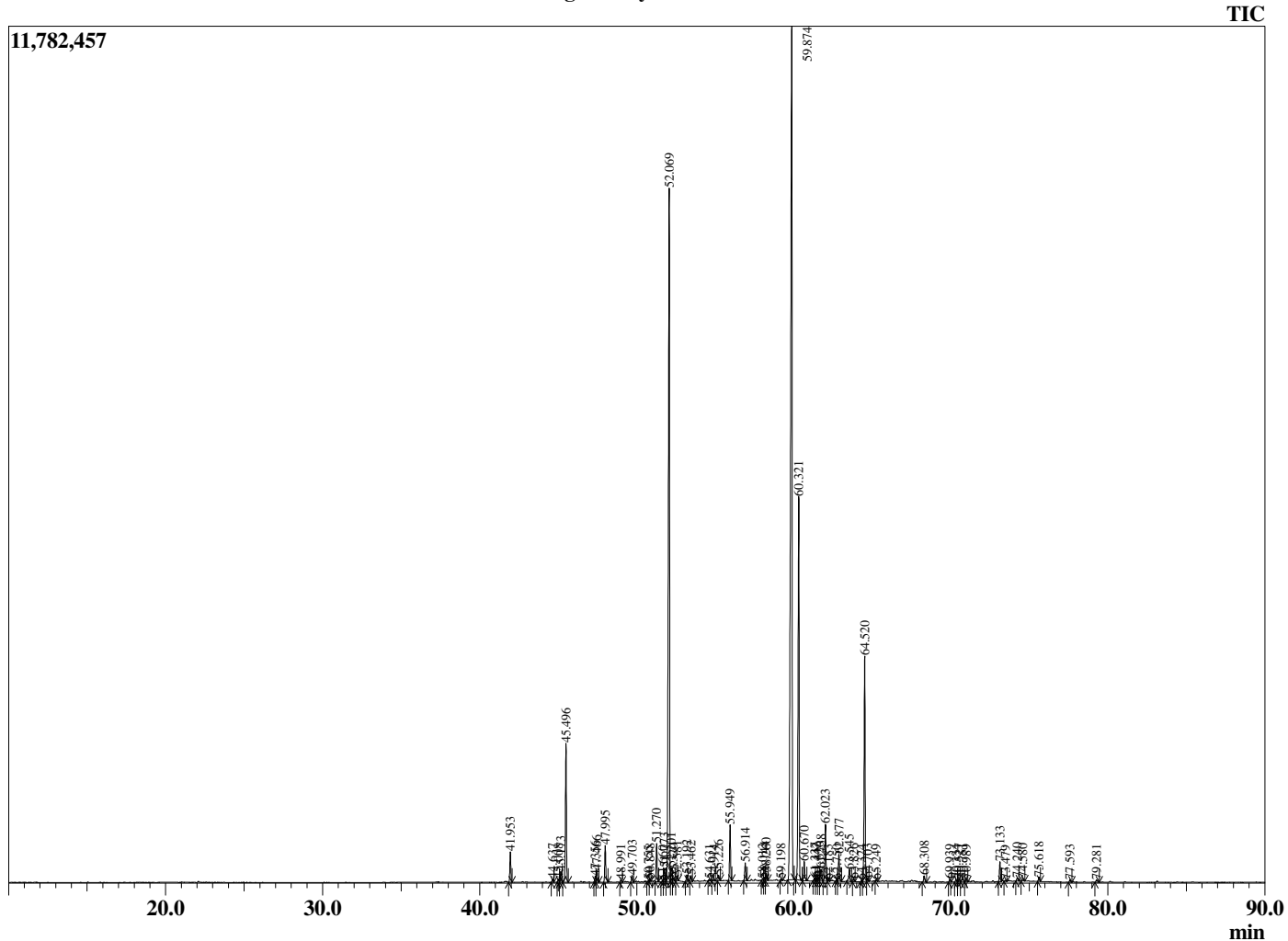
Analyzed by : Dr. Robert S. Pappas  
 Analyzed : 4/11/2020 5:23:19 AM  
 Sample Type : Essential Oil  
 Sample Name : Myrrh Oil - Barefut  
 Sample ID : 0106  
 Injection Volume : 0.10  
 Instrument ID : GC-2



Peak Report TIC

R.Time	Name	Area%
41.953	delta-Elemene	0.83
44.637	alpha-Copaene	0.10
45.008	beta-Elemene isomer	0.09
45.173	beta-Bourbonene	0.31
45.496	beta-Elemene	3.94
47.356	beta-Ylangene	0.18
47.466	beta-Caryophyllene	0.36
47.995	gamma-Elemene	1.14
48.991	trans-Murrola-3,5-diene	0.07
49.703	alpha-Humulene	0.20
50.755	Unidentified	0.04
50.848	trans-Cadina-1(6),4-diene	0.06
51.270	Germacrene D	1.11
51.660	Valencene	0.05
51.773	beta-Selinene	0.40
52.069	Curzerene	24.43
52.201	alpha-Selinene	0.44
52.320	alpha-Murolene + cis-alpha-Bisabolene	0.10
52.581	Unidentified	0.13
53.192	gamma-Cadinene	0.19
53.462	delta-Cadinene	0.15
54.631	Eremophilene isomer	0.05
54.914	Selina-3,7(11)-diene	0.08
55.226	Elemol	0.16
55.949	Germacrene B	1.59
56.914	Unidentified	0.54
58.013	Unidentified	0.05
58.144	trans-beta-Elemenone	0.09
58.260	Curzerenone	0.23
59.198	1,10-di-epi-Cubanol	0.04
59.874	Furanoedesma-1,3-diene	37.48
60.321	Lindestrene	11.98
60.670	tau-Cadinol	0.63
61.337	Unidentified	0.09
61.442	alpha-Eudesmol	0.13
61.620	Unidentified	0.13
61.738	Furanoedesma 1,4-diene	0.45
62.023	Intermedeol	1.74
62.183	Unidentified	0.06
62.750	Unidentified	0.05
62.877	2-Methoxyfuranodiene A	0.80
63.545	Germacrene	0.41
63.826	Unidentified	0.08
64.324	Unidentified	0.05
64.520	2-Methoxyfuranodiene B	6.73
64.703	Unidentified	0.09
65.249	Unidentified	0.03
68.308	Unidentified	0.21
69.939	Unidentified	0.09
70.334	Unidentified	0.09
70.527	2-Acetoxyfuranodiene isomer	0.10
70.751	Unidentified	0.16
70.989	Unidentified	0.10
73.133	2-Acetoxyfuranodiene	0.61
73.479	Unidentified	0.04
74.240	Unidentified	0.12
74.580	Unidentified	0.09
75.618	Unidentified	0.13
77.593	Unidentified	0.08
79.281	Unidentified	0.11
		100.00

Chromatogram Myrrh Oil - Barefut



Comments:

The analysis of this Myrrh batch sample meets the expected chemical profile for authentic essential oil of *Commiphora myrrha*. No contamination or adulteration was detected.

The results provided in this GCMS quality analysis reflect the chemical composition of the oil and lot referenced above on the date of analysis.