

Sample Information

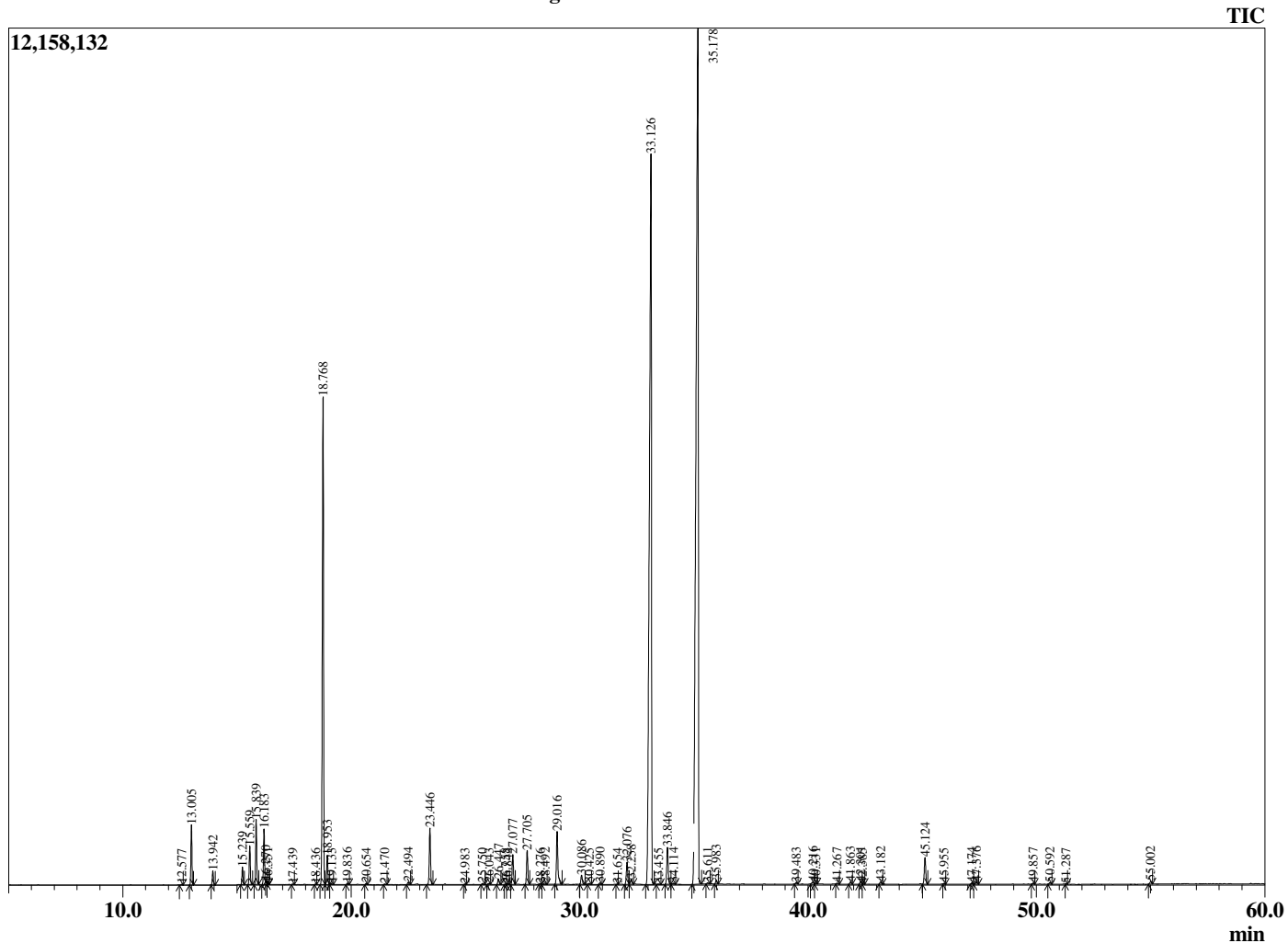
Analyzed by : Dr. Robert S. Pappas
 Analyzed : 9/3/2020 2:53:57 PM
 Sample Type : Essential Oil
 Sample Name : Litsea cubeba - Barefut
 Sample ID : 0103
 Injection Volume : 0.10
 Instrument ID: GC-3



Peak Report TIC

R.Time	Name	Area%
3.781	2-Methyl 3-buten-2-ol	0.01
12.577	alpha-Thujene	0.02
13.005	alpha-Pinene	1.26
13.942	Camphene	0.30
15.239	Sabinene	0.39
15.559	beta-Pinene	0.89
15.839	6-Methyl hept-5-en-2-one	1.43
16.183	Myrcene	1.34
16.270	Dehydro-1,8-Cineole	0.01
16.351	Sulcatol	0.01
17.439	delta-3-Carene	0.02
18.436	para-Cymene	0.01
18.768	Limonene	12.69
18.953	1,8-cineole	0.72
19.133	cis-beta-Ocimene	0.03
19.836	trans-beta-Ocimene	0.04
20.654	gamma-Terpinene	0.03
21.470	cis-Linalool oxide (furanoid)	0.02
22.494	Terpinolene	0.07
23.446	Linalool	1.47
24.983	trans-para-Mentha-2,8-dien-1-ol	0.02
25.750	cis-Limonene oxide	0.03
26.043	trans-Limonene oxide	0.04
26.447	exo-Isocitral	0.15
26.758	Camphor	0.01
26.842	Unidentified	0.02
27.077	Citronellal	0.79
27.705	Isoneral	0.89
28.276	Unidentified	0.02
28.492	Borneol	0.06
29.016	Isogeranial	1.57
30.086	alpha-Terpineol	0.28
30.425	cis-Piperitol	0.03
30.890	cis-Carveol	0.05
31.654	trans-Piperitol	0.02
32.076	Nerol	0.65
32.258	Citronellol	0.16
33.126	Neral	30.86
33.455	Carvone	0.03
33.846	Geraniol	1.08
34.114	Piperitone	0.04
35.178	Geranial	40.76
35.611	Perillaldehyde	0.04
35.983	trans-Carvone oxide	0.10
39.483	Unidentified	0.05
40.216	Geranic acid	0.09
40.331	alpha-Terpinyl acetate	0.03
41.267	Unidentified	0.02
41.863	Unidentified	0.07
42.301	alpha-Copaene	0.09
42.385	Geranyl acetate	0.01
43.182	beta-Elemene	0.07
45.124	beta-Caryophyllene	0.80
45.955	trans-alpha-Bergamotene	0.02
47.174	trans-beta-Farnesene	0.04
47.376	alpha-Humulene	0.07
49.857	Bicyclogermacrene	0.03
50.592	beta-Bisabolene	0.05
51.287	(-)-alpha-Panasin	0.01
55.002	Caryophyllene oxide	0.08
		100.00

Chromatogram Litsea cubeba - Barefut



Comments:

The analysis of this Litsea cubeba batch sample meets the expected chemical profile for authentic essential oil of *Litsea cubeba*. No contamination or adulteration was detected.

The results provided in this GCMS quality analysis reflect the chemical composition of the oil and lot referenced above on the date of analysis.