

Sample Information

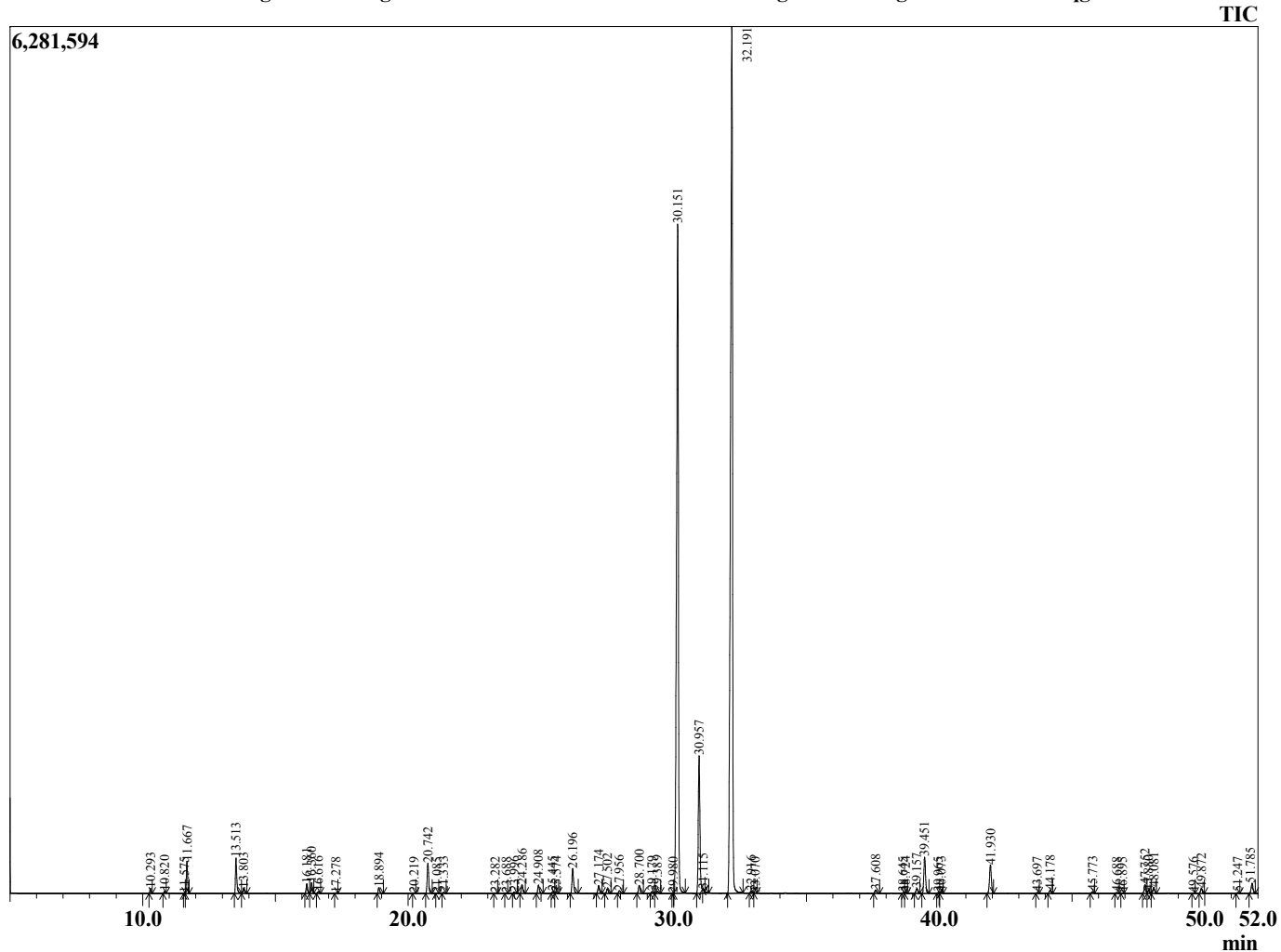
Analyzed by : Dr. Robert S. Pappas  
 Analyzed : 8/7/2015 4:13:23 AM  
 Sample Type : Essential Oil  
 Sample Name : Lemongrass  
 Sample ID : BA150805C  
 Injection Volume : 0.10  
 Data File : C:\GCMSsolution\Data\EOU\Lemongrass\Lemongrass BA150805C.qgd



Peak Report TIC

R.Time	Name	Area%
10.293	Tricyclene	0.15
10.820	Pinene<alpha>	0.06
11.575	Fenchene <alpha>	0.01
11.667	Camphene	1.00
13.513	Hepten-2-one<6-methyl-5->	1.26
13.803	Myrcene	0.20
16.181	Limonene	0.36
16.360	Cineole<1,8->	0.40
16.616	Ocimene<(Z)-beta>	0.07
17.278	Ocimene<E-beta>	0.02
18.894	Nonanone<2>	0.23
20.219	Rose-furan	0.03
20.742	Linalool	1.22
21.085	Pinene oxide<alpha>	0.02
21.333	Cyclocitral alpha	0.05
23.282	Epiphocitral A	0.03
23.688	Isocitral <exo>	0.01
23.996	Chrysanthal<E>	0.07
24.286	Citronellal	0.36
24.908	Isocitral <cis>	0.36
25.445	Rosefuran epoxide	0.08
25.574	Borneol	0.06
26.196	Isocitral <trans>	1.09
27.174	Terpineol <alpha>	0.33
27.502	Cis-Piperitol	0.21
27.956	Cyclocitral beta	0.15
28.700	Ketone as SM	0.37
29.179	Nerol	0.08
29.389	Citronellol	0.10
29.980	Geranial formate +Carvacrol	0.01
30.151	Neral	32.54
30.957	Geraniol	6.31
31.115	Piperitone	0.02
32.191	Geranial	47.05
32.916	Ketone as SM	0.08
33.070	Carvone oxide<E>	0.02
37.608	Eugenol	0.17
38.645	Isoledene	0.04
38.724	Ylangene <alpha>	0.06
39.157	Copaene <alpha>	0.23
39.451	Geranyl acetate	1.68
39.965	Cubebene <beta>	0.03
40.073	Elemene <beta>	0.05
41.930	Caryophyllene <trans>	1.40
43.697	Isoeugenol <trans>	0.04
44.178	Humulene<alpha>	0.14
45.773	Germacrene D	0.08
46.688	Epi-cubebol	0.05
46.895	Muurolene <alpha>	0.02
47.752	Amorphene <delta>	0.41
47.880	Cadinene <gamma>	0.13
48.081	Cadinene <delta>	0.27
49.576	Trienal as SM	0.02
49.872	Elemol <alpha>	0.22
51.247	Trienal as SM	0.04
51.785	Caryophyllene oxide	0.51
		100.00

Chromatogram Lemongrass C:\GCMSsolution\Data\EOU\Lemongrass\Lemongrass BA150805C.qgd



Comments:

Typical Ranges of Main Components: