

Sample Information

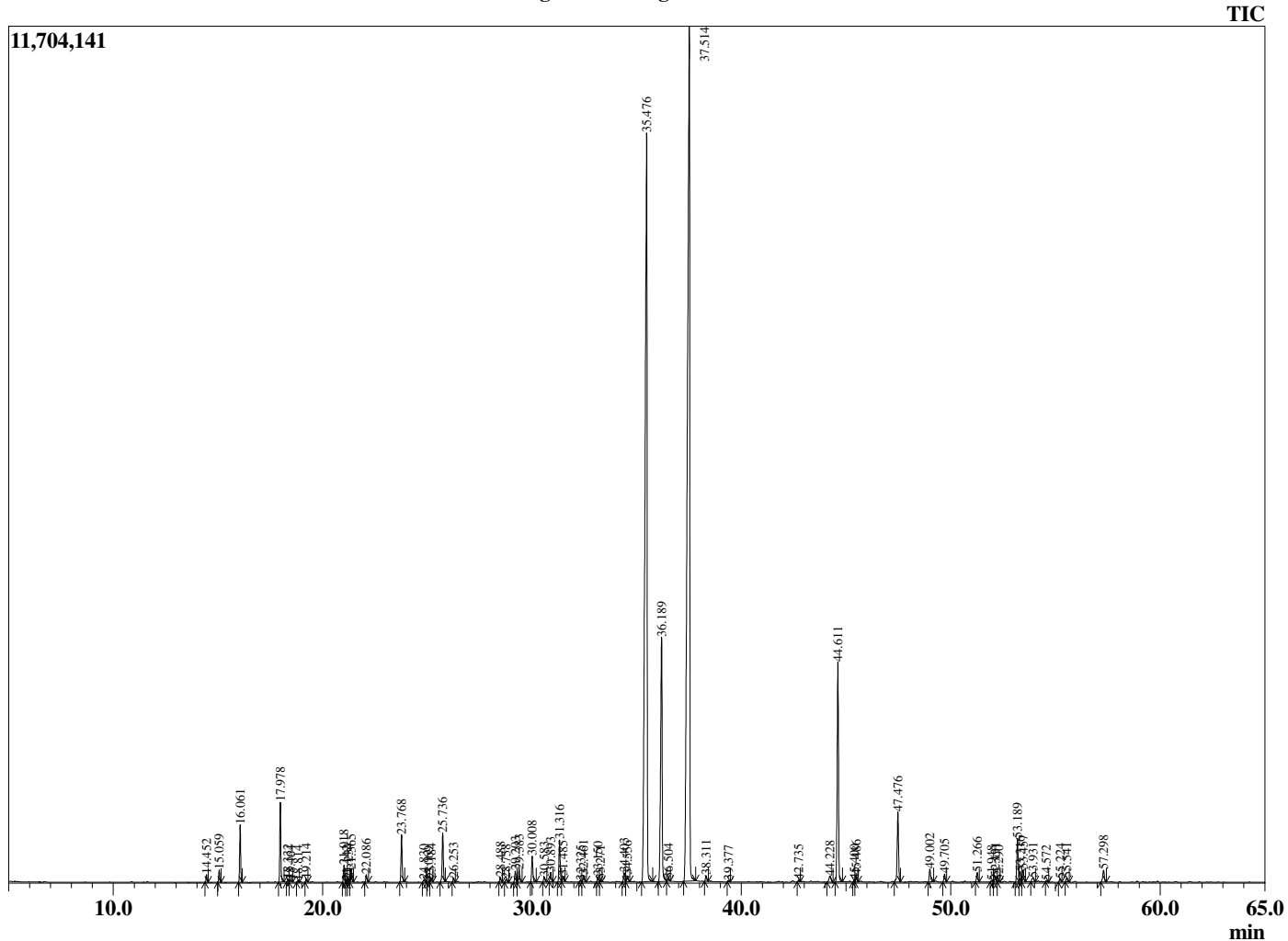
Analyzed by : Dr. Robert S. Pappas
 Analyzed : 4/11/2020 7:21:36 AM
 Sample Type : Essential Oil
 Sample Name : Lemongrass Oil - Barefut
 Sample ID : 0106
 Injection Volume : 0.10
 Instrument ID : GC-2



Peak Report TIC

R.Time	Name	Area%
14.452	Tricyclene	0.15
15.059	alpha-Pinene	0.24
16.061	Camphene	1.15
17.978	6-Methyl hept-5-en-2-one	1.65
18.332	Myrcene	0.06
18.464	dehydro-1,8-Cineole	0.06
18.814	trans-Dehydroxylinalool oxide	0.03
19.214	Octanal	0.06
21.018	Limonene	0.37
21.142	beta-Phellandrene	0.03
21.234	1,8-cineole	0.07
21.365	cis-beta-Ocimene	0.28
22.086	trans-beta-Ocimene	0.16
23.768	4-Nonanone	1.05
24.830	Terpinolene	0.07
25.069	4-Nonanol	0.02
25.184	Rosefuran	0.08
25.736	Linalool	1.15
26.253	alpha-Pinene oxide	0.10
28.488	Epiphocitral A	0.11
28.758	exo-Isocitral	0.09
29.203	trans-Chrysanthemal	0.27
29.383	Citronellal	0.31
30.008	Isoneral	0.64
30.583	Isoborneol	0.13
30.893	Borneol	0.23
31.316	Isogeranial	1.00
31.485	Unidentified	0.14
32.325	Unidentified	0.04
32.461	alpha-Terpineol	0.17
33.150	Decanal	0.13
33.271	cis-Carveol	0.04
34.403	Nerol	0.26
34.556	Citronellol	0.18
35.476	Neral	30.80
36.189	Geraniol	7.45
36.504	Piperitone	0.07
37.514	Geranial	39.41
38.311	trans-Carvone oxide	0.15
39.377	Geranyl formate	0.03
42.735	Citronellyl acetate	0.05
44.228	Isoledene	0.24
44.611	Geranyl acetate	5.68
45.400	beta-Cubebene	0.04
45.486	beta-Elemene	0.16
47.476	beta-Caryophyllene	1.89
49.002	trans-Isoeugenol	0.37
49.705	alpha-Humulene	0.21
51.266	Germacrene D	0.25
51.948	trans-Muurolo-4(14),5-diene	0.04
52.131	Unidentified	0.13
52.290	alpha-Muuroloene	0.03
53.189	gamma-Cadinene	1.16
53.316	Cubebol	0.27
53.457	delta-Cadinene	0.30
53.931	trans-gamma-Bisabolene	0.15
54.572	alpha-Cadinene	0.03
55.224	Elemol	0.09
55.541	Geranyl butyrate	0.10
57.298	Caryophyllene oxide	0.37
		100.00

Chromatogram Lemongrass Oil - Barefut



Comments:

The analysis of this Lemongrass batch sample meets the expected chemical profile for authentic essential oil of *Cymbopogon flexuosus*. No contamination or adulteration was detected.

The results provided in this GCMS quality analysis reflect the chemical composition of the oil and lot referenced above on the date of analysis.