

Sample Information

Analyzed by : Dr. Robert S. Pappas
 Analyzed : 7/4/2019 1:53:40 AM
 Sample Type : Essential Oil
 Sample Name : Lemongrass - Barefut
 Sample ID : 0105
 Injection Volume : 0.10
 Instrument ID : GC-3

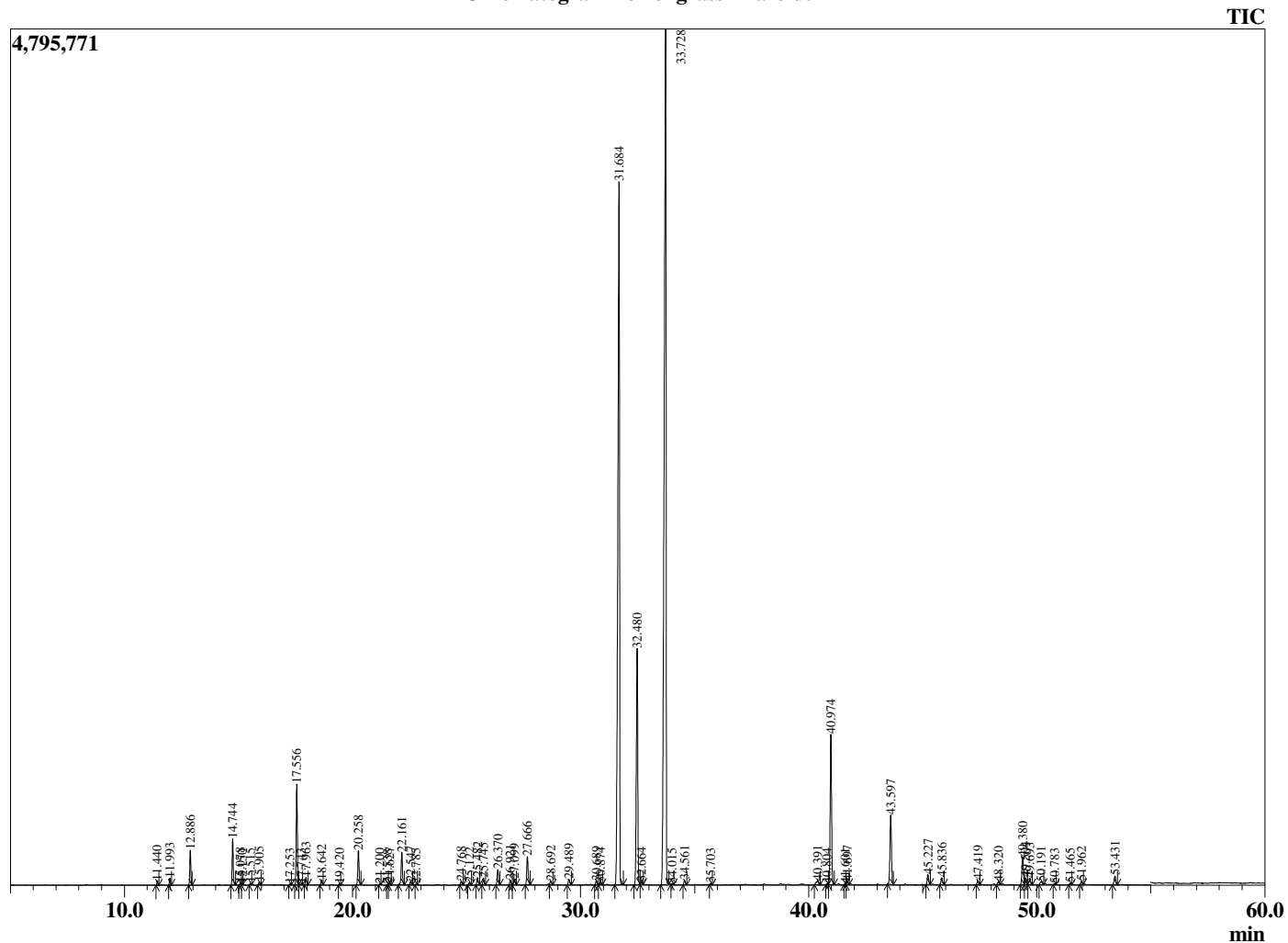


Peak Report TIC

R.Time	Name	Area%
11.440	Tricyclene	0.10
11.993	alpha-Pinene	0.17
12.886	Camphene	0.88
14.744	6-Methyl hept-5-en-2-one	1.22
15.078	Myrcene	0.06
15.150	Dehydro-1,8-cineole	0.02
15.515	trans-Dehydroxylinalool oxide	0.04
15.905	Octanal	0.08
17.253	para-Cymene	0.02
17.556	Limonene	2.83
17.743	1,8-cineole	0.04
17.963	cis-beta-Ocimene	0.21
18.642	trans-beta-Ocimene	0.14
19.420	gamma-Terpinene	0.02
20.258	4-Nonanone	1.05
21.200	Terpinolene	0.03
21.538	4-Nonanol	0.02
21.627	Rosefuran	0.08
22.161	Linalool	1.05
22.547	alpha-Pinene oxide	0.10
22.785	Unidentified	0.02
24.768	Epiphocitral A	0.11
25.122	exo-Isocitral	0.07
25.482	trans-Chrysanthamal	0.23
25.745	Citronellal	0.22
26.370	cis-Chrysanthenol	0.49
26.921	Isoborneol	0.15
27.099	Borneol	0.19
27.666	trans-Isocitral	0.97
28.692	alpha-Terpineol	0.14
29.489	Decanal	0.19
30.689	Nerol	0.12
30.874	Citronellol	0.08
31.684	Neral	29.41
32.480	Geraniol	8.24
32.664	Piperitone	0.08
33.728	Geranial	39.64
34.015	4-Undecanone	0.03
34.561	trans-Carvone oxide	0.15
35.703	Geranyl formate	0.04
40.391	Cyclosativene	0.22
40.804	alpha-Copaene	0.04
40.974	Geranyl acetate	5.26
41.601	beta-Cubebene	0.03
41.697	beta-Elemene	0.12
43.597	beta-Caryophyllene	2.58
45.227	trans-Isoeugenol	0.34
45.836	alpha-Humulene	0.25
47.419	Germacrene D	0.15
48.320	4-epi-Cubebol	0.11
49.380	gamma-Cadinene	1.02
49.504	Cubebol	0.25
49.693	delta-Cadinene	0.23
50.191	Unidentified	0.16
50.783	alpha-Cadinene	0.03
51.465	Elemol	0.05
51.962	Geranyl butyrate	0.10
53.431	Caryophyllene oxide	0.35
		100.00

This report is valid for 1 year from the analyzed date.

Chromatogram Lemongrass - Barefut



Comments:
 The analysis of this Lemongrass batch sample meets the expected chemical profile for authentic essential oil of *Cymbopogon flexuosus*. No contamination or adulteration was detected.