

Sample Information

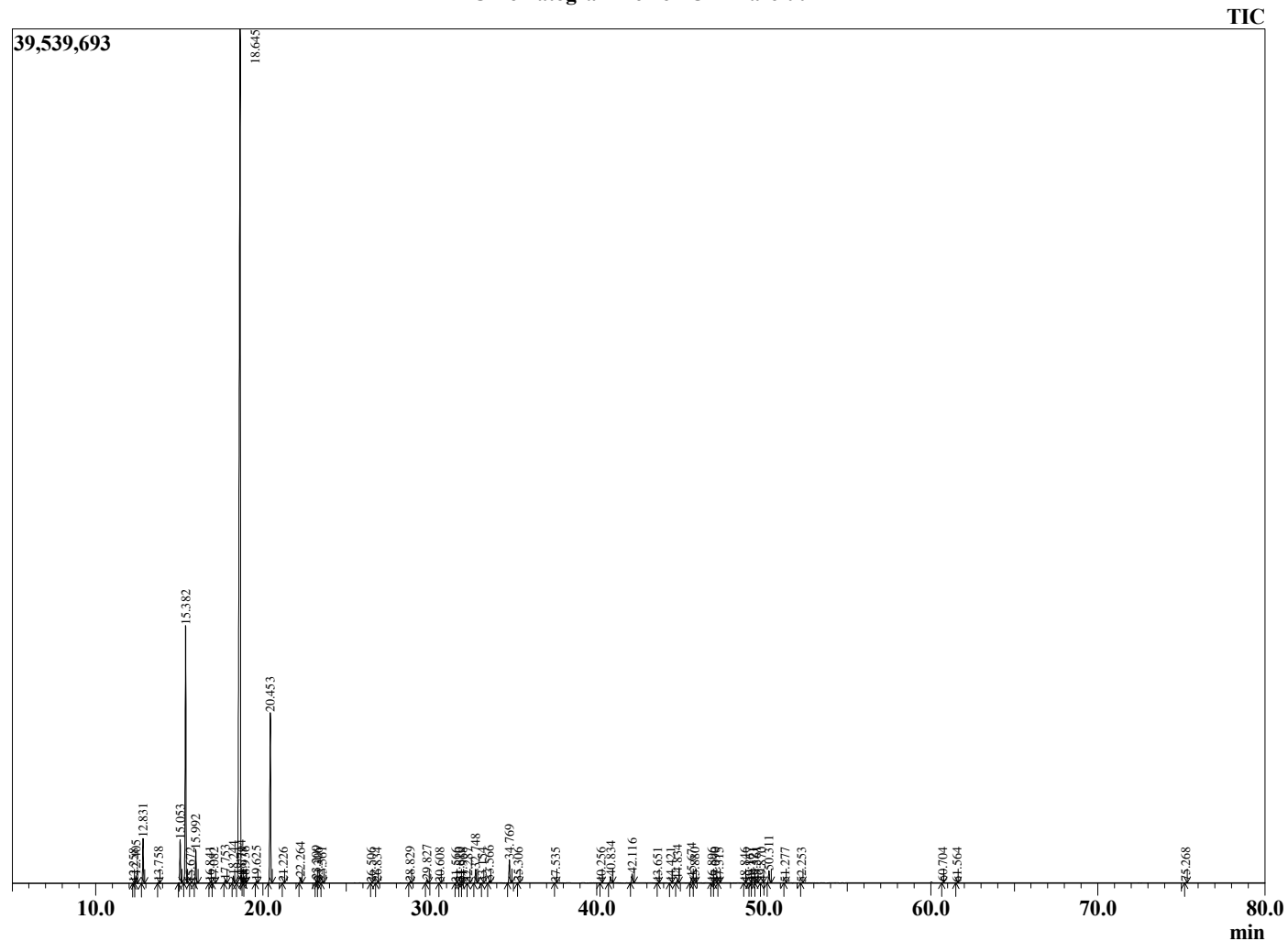
Analyzed by : Dr. Robert S. Pappas
 Analyzed : 3/28/2021 8:30:44 AM
 Sample Type : Essential Oil
 Sample Name : Lemon Oil - Barefut
 Sample ID : 0113
 Injection Volume : 0.10
 Instrument ID: : GC-3



Peak Report TIC

R.Time	Name	Area%
12.258	Tricyclene	0.00
12.405	alpha-Thujene	0.33
12.831	alpha-Pinene	1.96
13.758	Camphene	0.05
15.053	Sabinene	2.07
15.382	beta-Pinene	12.51
15.672	6-Methyl hept-5-en-2-one	0.01
15.992	Myrcene	1.54
16.841	Octanal	0.04
17.082	alpha-Phellandrene	0.04
17.753	alpha-Terpinene	0.17
18.244	para-Cymene	0.40
18.645	Limonene	66.04
18.714	beta-Phellandrene	0.04
18.779	1,8-Cineole	0.01
18.936	(Z)-beta-Ocimene	0.04
19.625	(E)-beta-Ocimene	0.09
20.453	gamma-Terpinene	9.12
21.226	trans-Sabinene hydrate	0.03
22.264	Terpinolene	0.30
23.209	Linalool	0.15
23.306	cis-Sabinene hydrate	0.02
23.561	Nonanal	0.08
26.506	Camphor	0.01
26.834	Citronellal	0.03
28.829	Terpinen-4-ol	0.07
29.827	alpha-Terpineol	0.17
30.608	Decanal	0.02
31.566	Unidentified	0.01
31.810	Nerol	0.03
31.968	Citronellol	0.01
32.287	2,3-Epoxygeranial	0.01
32.748	Neral	0.77
33.154	Carvone	0.01
33.566	Linalyl acetate	0.11
34.769	Geranial	1.30
35.306	Perillaldehyde	0.01
37.535	Undecenal	0.02
40.256	Citronellyl acetate	0.01
40.834	Neryl acetate	0.39
42.116	Geranyl acetate	0.52
43.651	Tetradecane	0.01
44.421	cis-alpha-Bergamotene	0.02
44.834	trans-beta-Caryophyllene	0.17
45.674	trans-alpha-Bergamotene	0.28
45.880	Unidentified	0.01
46.896	(E)-beta-Farnesene	0.02
47.090	alpha-Humulene	0.01
47.315	beta-Santalene	0.01
48.846	(Z,E)-alpha-Farnesene	0.01
49.167	Unidentified	0.01
49.371	Valencene	0.02
49.561	Bicyclogermacrene	0.05
49.870	alpha-Bisabolene	0.03
50.311	beta-Bisabolene	0.75
51.277	beta-Sesquiphellandrene	0.01
52.253	Unidentified	0.01
60.704	alpha-Bisabolol	0.01
61.564	Unidentified	0.01
75.268	Citropten	0.02
		100.00

Chromatogram Lemon Oil - Barefut



Comments:

The analysis of this Lemon batch sample meets the expected chemical profile for authentic essential oil of *Citrus limon*. No contamination or adulteration was detected. The results provided in this GCMS quality analysis reflect the chemical composition of the oil and lot referenced above on the date of analysis.