

Sample Information

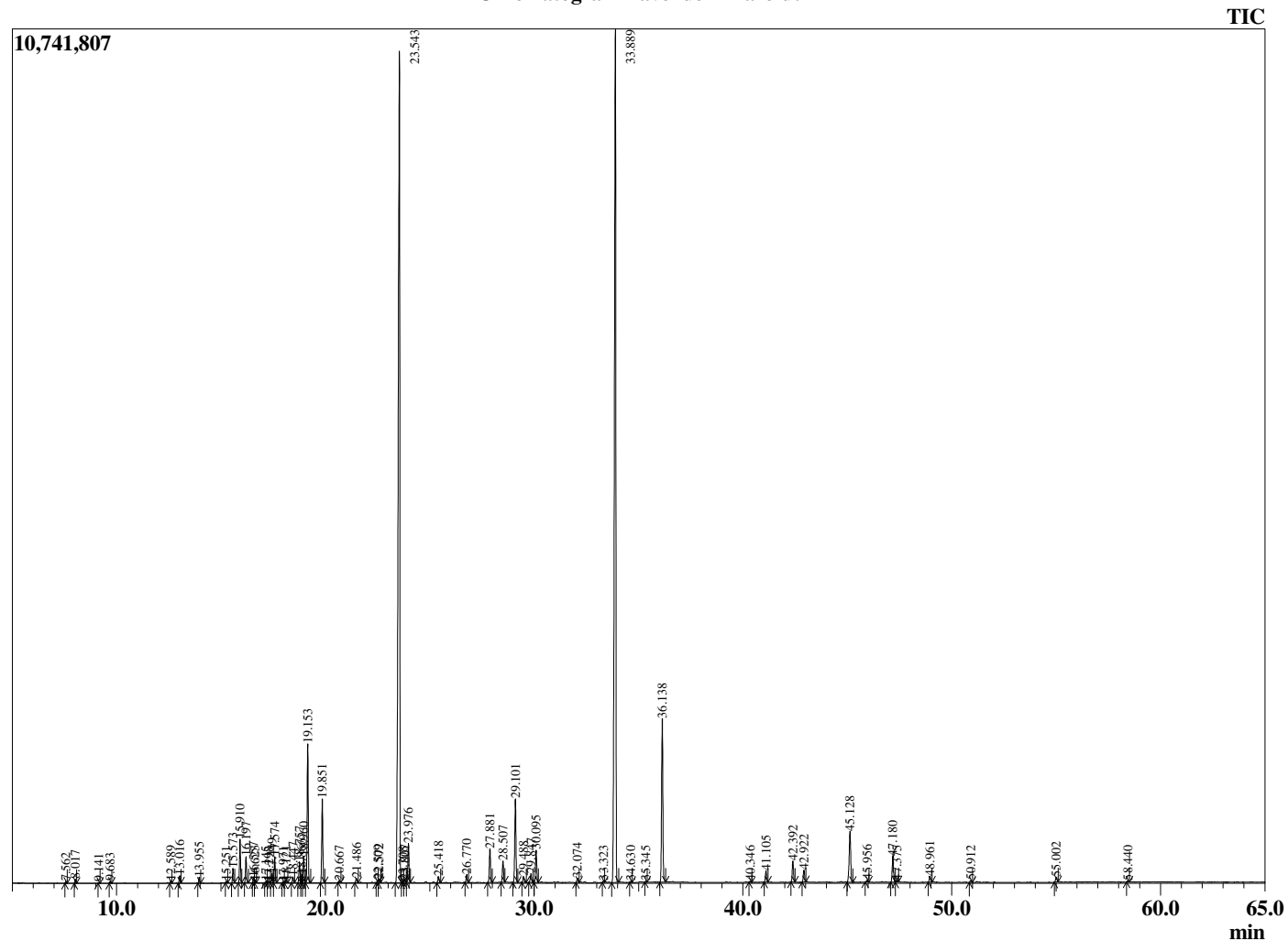
Analyzed by : Dr. Robert S. Pappas  
 Analyzed : 9/3/2020 8:44:00 AM  
 Sample Type : Essential Oil  
 Sample Name : Lavender - Barefut  
 Sample ID : 0105  
 Injection Volume : 0.10  
 Instrument ID : GC-3



Peak Report TIC

R.Time	Name	Area%
3.786	Unidentified	0.02
7.562	Butyl acetate	0.04
8.017	Hexyl methyl ether	0.08
9.141	Hex-3(Z)-enol	0.02
9.683	Hexanol	0.04
12.589	alpha-Thujene	0.06
13.016	alpha-Pinene	0.19
13.955	Camphene	0.15
15.251	Sabinene	0.03
15.573	1-Octen-3-ol	0.38
15.910	3-Octanone	1.14
16.197	Myrcene	0.71
16.557	Butyl butyrate	0.15
16.623	3-Octanol	0.04
17.145	Pseudolimonene	0.03
17.298	alpha-Phellandrene	0.03
17.449	delta-3-Carene	0.26
17.574	Hexyl acetate	0.70
17.971	alpha-Terpinene	0.02
18.121	ortho-Cymene	0.06
18.447	para-Cymene	0.16
18.757	Limonene	0.59
18.866	beta-Phellandrene	0.22
18.960	1,8-cineole	0.77
19.153	cis-beta-Ocimene	3.97
19.851	trans-beta-Ocimene	2.40
20.667	gamma-Terpinene	0.06
21.486	cis-Linalool oxide (furanoid)	0.14
22.509	Terpinolene	0.08
22.572	trans-Linalool oxide (furanoid)	0.10
23.543	Linalool	35.15
23.708	Hotrienol	0.04
23.807	Hexyl propionate	0.08
23.976	1-Octen-3-yl acetate	1.16
25.418	allo-Ocimene	0.19
26.770	Camphor	0.24
27.881	Lavandulol	1.08
28.507	Borneol	0.66
29.101	Terpinen-4-ol	2.69
29.488	Cryptone	0.20
29.847	Hexyl butyrate	0.30
30.095	alpha-Terpineol	1.03
32.074	Nerol	0.14
33.323	Cuminal	0.05
33.889	Linalyl acetate	33.64
34.630	Unidentified	0.03
35.345	Unidentified	0.02
36.138	Lavandulyl acetate	5.53
40.346	alpha-Terpinyl acetate	0.03
41.105	Neryl acetate	0.38
42.392	Geranyl acetate	0.70
42.922	Hexyl hexanoate	0.40
45.128	beta-Caryophyllene	2.07
45.956	trans-alpha-Bergamotene	0.08
47.180	trans-beta-Farnesene	0.90
47.375	alpha-Humulene	0.04
48.961	Germacrene D	0.22
50.912	gamma-Cadinene	0.07
55.002	Caryophyllene oxide	0.18
58.440	tau-Cadinol	0.05
		100.00

Chromatogram Lavender - Barefut



Comments:

The analysis of this Lavender, France batch sample meets the expected chemical profile for authentic essential oil of *Lavandula angustifolia*. No contamination or adulteration was detected.

The results provided in this GCMS quality analysis reflect the chemical composition of the oil and lot referenced above on the date of analysis.