

Sample Information

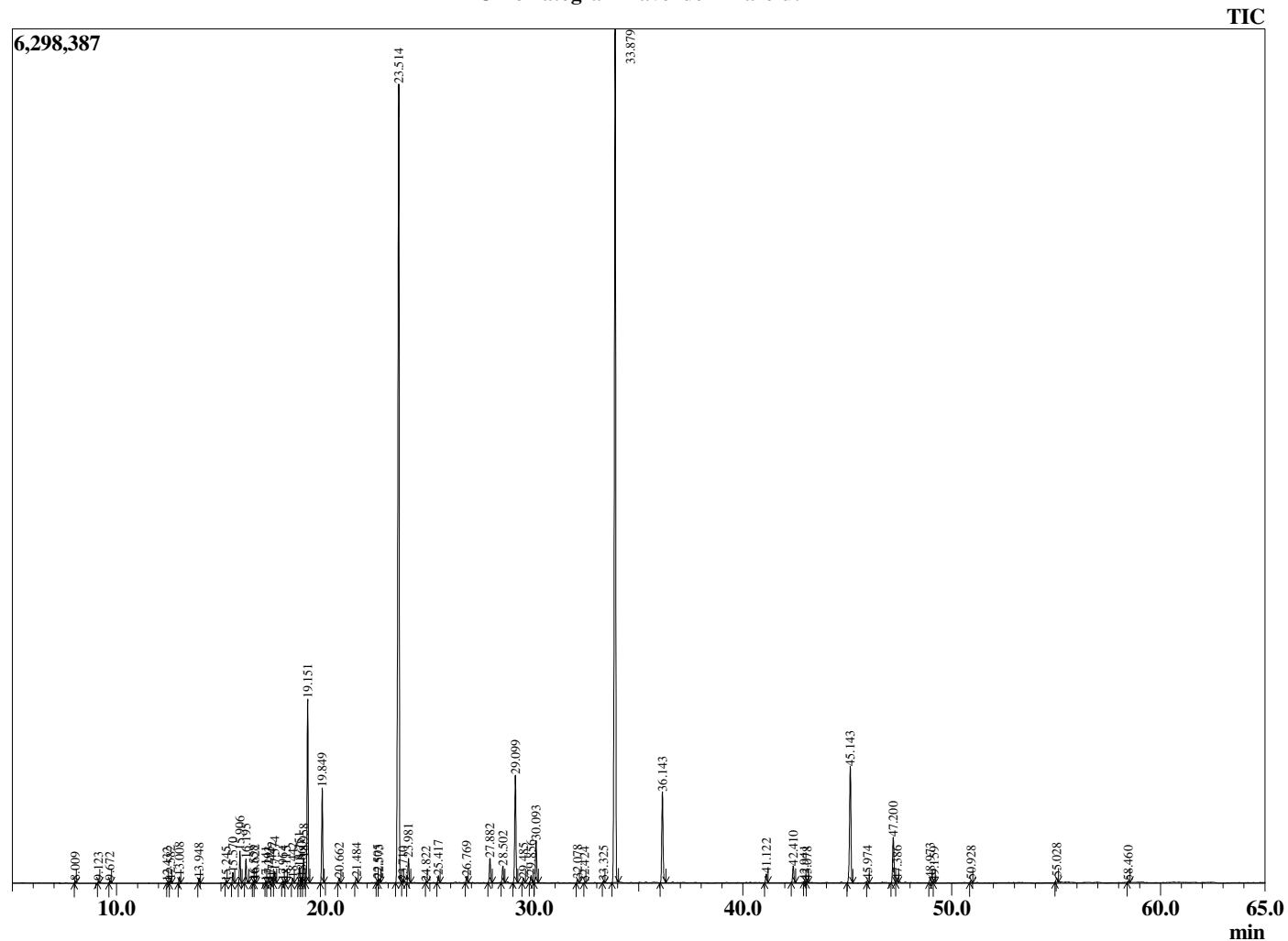
Analyzed by : Dr. Robert S. Pappas
 Analyzed : 3/17/2020 10:21:48 PM
 Sample Type : Essential Oil
 Sample Name : Lavender - Barefut
 Sample ID : 0112
 Injection Volume : 0.10
 Instrument ID : GC-3



Peak Report TIC

R.Time	Name	Area%
4.229	3-Methylbutanal	0.01
8.009	Hexyl methyl ether	0.05
9.123	Hex-3(Z)-enol	0.05
9.672	n-Hexanol	0.06
12.432	Tricyclene	0.02
12.582	alpha-Thujene	0.07
13.008	alpha-Pinene	0.17
13.948	Camphene	0.15
15.245	Sabinene	0.03
15.570	1-Octen-3-ol	0.30
15.906	3-Octanone	0.90
16.195	Myrcene	0.71
16.558	Butyl butyrate	0.05
16.622	3-Octanol	0.09
17.141	Pseudolimonene	0.03
17.293	alpha-Phellandrene	0.04
17.442	delta-3-Carene	0.16
17.574	Hexyl acetate	0.34
17.964	alpha-Terpinene	0.05
18.115	ortho-Cymene	0.04
18.442	para-Cymene	0.15
18.751	Limonene	0.48
18.860	beta-Phellandrene	0.18
18.958	1,8-cineole	0.76
19.151	cis-beta-Ocimene	5.60
19.849	trans-beta-Ocimene	2.93
20.662	gamma-Terpinene	0.15
21.484	cis-Linalool oxide (furanoid)	0.18
22.505	Terpinolene	0.10
22.573	trans-Linalool oxide (furanoid)	0.11
23.514	Linalool	32.10
23.710	Hotrienol	0.03
23.981	1-Octen-3-yl acetate	0.81
24.822	3-Octyl acetate	0.02
25.417	allo-Ocimene	0.24
26.769	Camphor	0.21
27.882	Lavandulol	0.85
28.502	Borneol	0.59
29.099	Terpinen-4-ol	3.91
29.485	Cryptone	0.16
29.856	Hexyl butyrate	0.26
30.093	alpha-Terpineol	1.48
32.078	Nerol	0.12
32.424	Bornyl formate	0.02
33.325	Cuminal	0.06
33.879	Linalyl acetate	33.40
36.143	Lavandulyl acetate	3.48
41.122	Neryl acetate	0.32
42.410	Geranyl acetate	0.61
42.941	Hexyl hexanoate	0.02
43.078	7-epi-Sesquithujene	0.03
45.143	beta-Caryophyllene	4.85
45.974	trans-alpha-Bergamotene	0.09
47.200	trans-beta-Farnesene	1.79
47.386	alpha-Humulene	0.08
48.973	Germacrene D	0.18
49.159	Unidentified	0.03
50.928	gamma-Cadinene	0.10
55.028	Caryophyllene oxide	0.18
58.460	tau-Cadinol	0.04
		100.00

Chromatogram Lavender - Barefut



Comments:

The analysis of this Lavender batch sample meets the expected chemical profile for authentic essential oil of *Lavandula angustifolia*. No contamination or adulteration was detected. The results provided in this GCMS quality analysis reflect the chemical composition of the oil and lot referenced above on the date of analysis.