

Sample Information

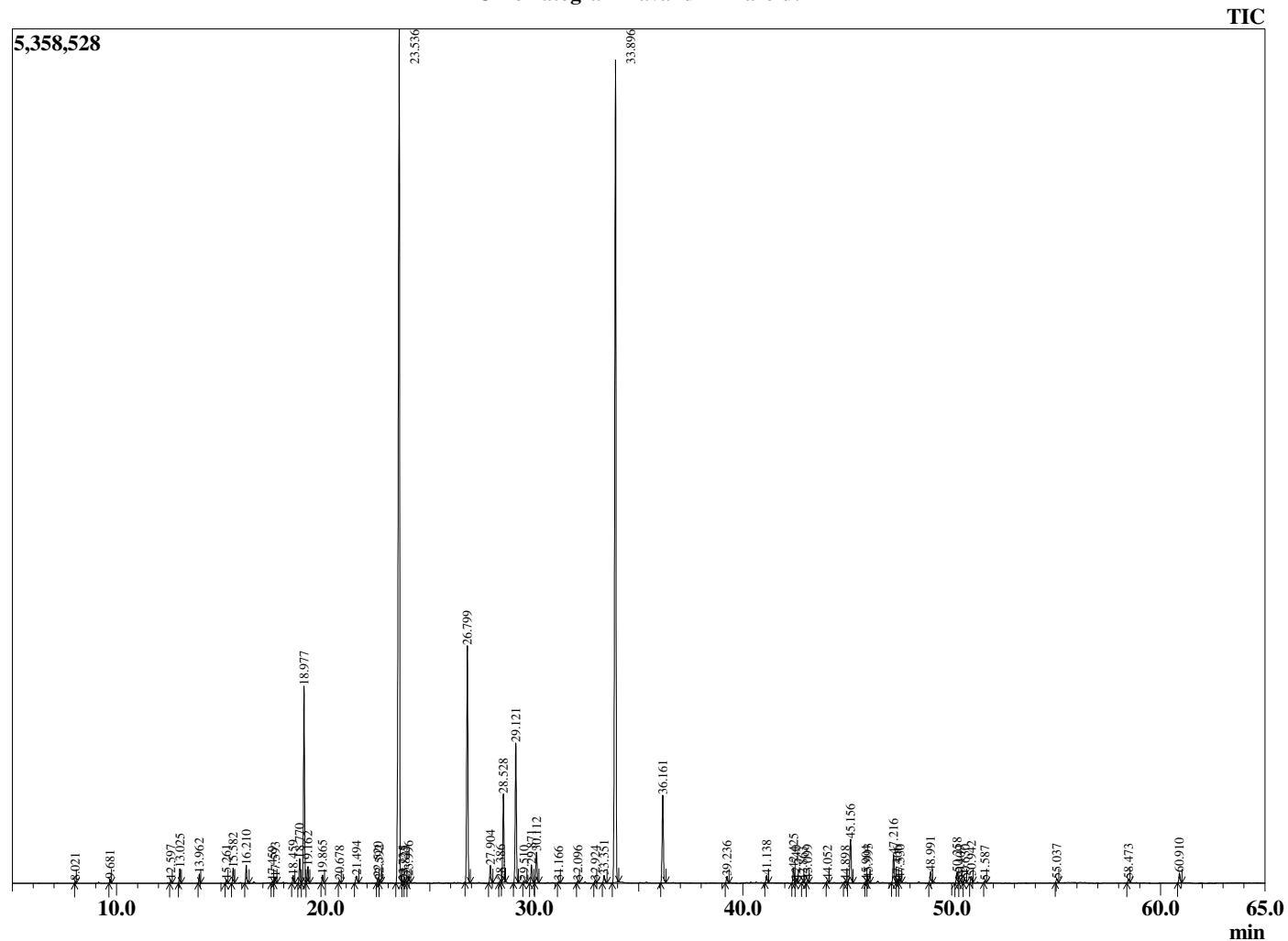
Analyzed by : Dr. Robert S. Pappas
 Analyzed : 4/11/2020 6:58:14 AM
 Sample Type : Essential Oil
 Sample Name : Lavandin - Barefut
 Sample ID : 0108
 Injection Volume : 0.10
 Instrument ID : GC-3



Peak Report TIC

R.Time	Name	Area%
8.021	Hexyl methyl ether	0.04
9.681	n-Hexanol	0.09
12.597	alpha-Thujene	0.07
13.025	alpha-Pinene	0.36
13.962	Camphene	0.24
15.261	Sabinene	0.10
15.582	beta-Pinene	0.41
16.210	Myrcene	0.52
17.459	delta-3-Carene	0.04
17.593	Hexyl acetate	0.16
18.459	para-Cymene	0.22
18.770	Limonene	0.72
18.977	1,8-cineole	5.81
19.162	cis-beta-Ocimene	0.49
19.865	trans-beta-Ocimene	0.25
20.678	gamma-Terpinene	0.08
21.494	cis-Linalool oxide (furanoid)	0.30
22.520	Terpinolene	0.18
22.592	trans-Linalool oxide (furanoid)	0.09
23.536	Linalool	32.39
23.725	Hotrienol	0.07
23.825	Hexyl propionate	0.09
23.996	1-Octen-3-yl acetate	0.21
26.799	Camphor	7.84
27.904	Lavandulol	0.56
28.386	delta-Terpineol	0.09
28.528	Borneol	2.91
29.121	Terpinen-4-ol	4.61
29.510	para-Cymen-8-ol	0.08
29.871	Hexyl butyrate	0.60
30.112	alpha-Terpineol	1.03
31.166	Octyl acetate	0.04
32.096	Nerol	0.08
32.924	Hexyl 2-methylbutyrate	0.08
33.351	Hexyl 3-methylbutyrate	0.28
33.896	Linalyl acetate	29.35
36.161	Lavandulyl acetate	3.05
39.236	Hexyl tiglate	0.23
41.138	Neryl acetate	0.25
42.425	Geranyl acetate	0.48
42.540	Daucene	0.08
42.863	beta-Bourbonene	0.03
43.099	7-epi-Sequitujene	0.09
44.052	Sesquithujene isomer	0.08
44.898	Unidentified	0.06
45.156	beta-Caryophyllene	1.75
45.904	Coumarin	0.07
45.993	trans-alpha-Bergamotene	0.15
47.216	trans-beta-Farnesene	1.04
47.406	alpha-Humulene	0.07
47.530	Unidentified	0.12
48.991	Germacrene D	0.39
50.258	Lavandulyl isovalerate	0.40
50.409	(E,E)-alpha-Farnesene	0.09
50.630	beta-Bisabolene	0.12
50.942	gamma-Cadinene	0.25
51.587	beta-Sesquiphellandrene	0.07
55.037	Caryophyllene oxide	0.14
58.473	tau-Cadinol	0.14
60.910	alpha-Bisabolol	0.36
		100.00

Chromatogram Lavandin - Barefut



Comments:

The analysis of this Lavandin, Grosso batch sample meets the expected chemical profile for authentic essential oil of *Lavandula x hybrida*. No contamination or adulteration was detected. The results provided in this GCMS quality analysis reflect the chemical composition of the oil and lot referenced above on the date of analysis.