

Sample Information

Analyzed by : Dr. Robert S. Pappas
 Analyzed : 4/10/2019 3:07:37 PM
 Sample Type : Essential Oil
 Sample Name : Lavandin grosso - Barefut
 Sample ID : 0107
 Injection Volume : 0.10
 Instrument ID : GC-3

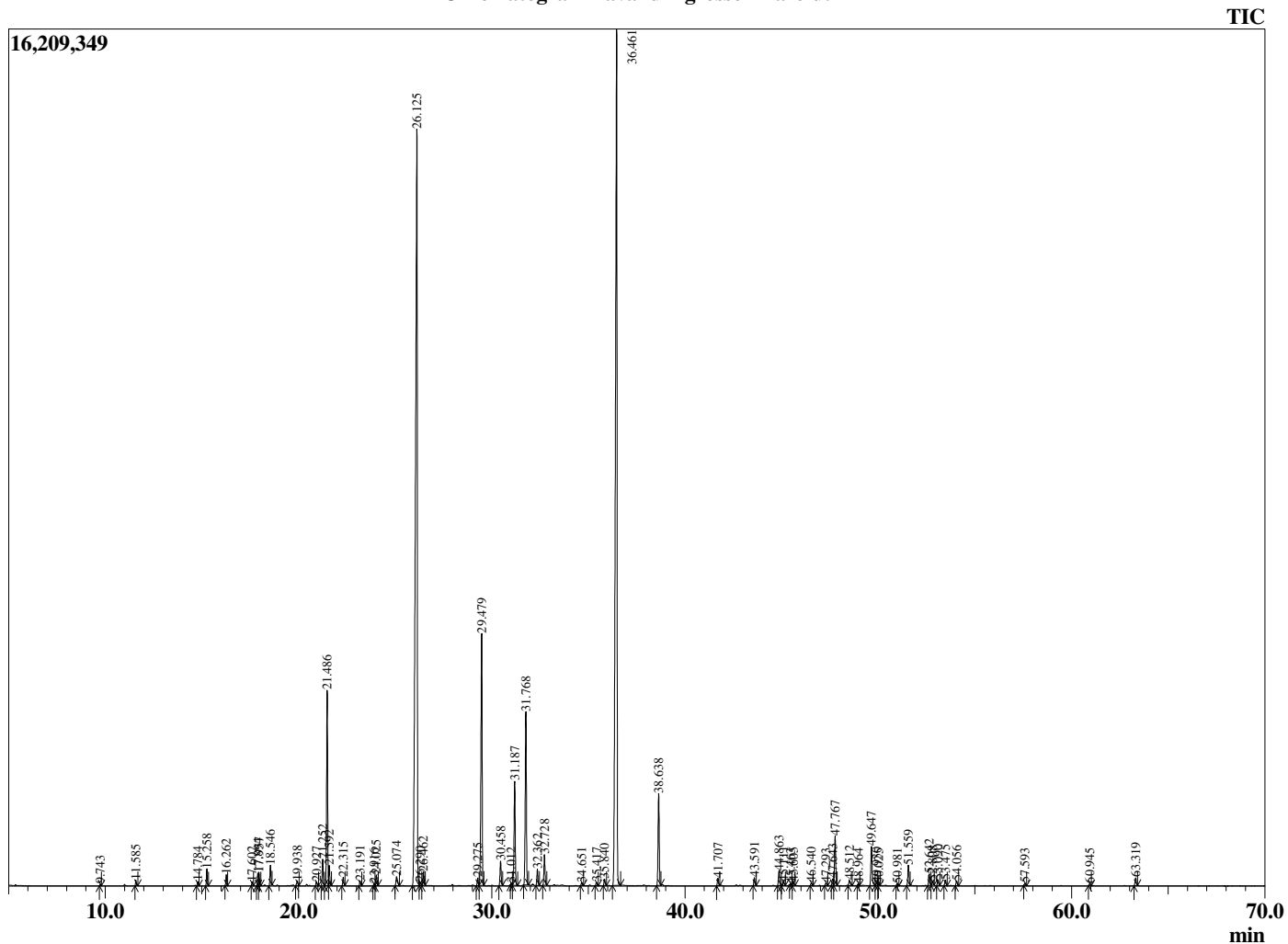


Peak Report TIC

R.Time	Name	Area%
9.743	Hexyl methyl ether	0.03
11.585	n-Hexanol	0.11
14.784	alpha-Thujene	0.09
15.258	alpha-Pinene	0.35
16.262	Camphene	0.23
17.602	Sabinene	0.09
17.894	1-Octen-3-ol	0.27
17.957	beta-Pinene	0.28
18.546	Myrcene	0.44
19.938	Hexyl acetate	0.14
20.927	para-Cymene	0.10
21.252	Limonene	0.64
21.486	1,8-cineole	4.68
21.592	cis-beta-Ocimene	0.46
22.315	trans-beta-Ocimene	0.20
23.191	gamma-Terpinene	0.12
23.916	1-Octanol	0.05
24.025	trans-Sabinene hydrate	0.28
25.074	Terpinolene	0.32
26.125	Linalool	31.96
26.290	Hexyl propionate	0.12
26.462	1-Octen-3-yl acetate	0.34
29.275	Hexyl isobutyrate	0.20
29.479	Camphor	7.04
30.458	Lavandulol	0.63
31.012	delta-Terpineol	0.05
31.187	Borneol	2.80
31.768	Terpinen-4-ol	4.67
32.362	Hexyl butyrate	0.41
32.728	alpha-Terpineol	0.82
34.651	Nerol	0.08
35.417	Hexyl 2-methylbutyrate	0.09
35.840	Hexyl 3-methylbutyrate	0.17
36.461	Linalyl acetate	33.13
38.638	Lavandulyl acetate	2.45
41.707	Hexyl tiglate	0.20
43.591	Neryl acetate	0.21
44.863	Geranyl acetate	0.41
45.111	Daucene	0.10
45.463	beta-Bourbonene	0.04
45.605	7-epi-Sesquithujene	0.08
46.540	Sesquithujene isomer	0.07
47.293	Unidentified	0.07
47.643	alpha-Santalene	0.18
47.767	beta-Caryophyllene	1.42
48.512	trans-alpha-Bergamotene	0.16
48.964	cis-beta-Farnesene	0.05
49.647	trans-beta-Farnesene	1.15
49.930	Unidentified	0.10
50.025	Unidentified	0.05
50.981	trans-Murrola-3,5-diene	0.05
51.559	Germacrene D	0.57
52.642	Lavandulyl isovalerate	0.31
52.808	(E,E)-alpha-Farnesene	0.12
53.090	beta-Bisabolene	0.15
53.475	gamma-Cadinene	0.16
54.056	beta-Sesquiphellandrene	0.14
57.593	Caryophyllene oxide	0.06
60.945	alpha-Muurolol (=Torreyol)	0.06
63.319	alpha-Bisabolol	0.22
		100.00

This report is valid for 1 year from the analyzed date.

Chromatogram Lavandin grosso - Barefut



Comments:

The analysis of this Lavandin grosso batch sample meets the expected chemical profile for authentic essential oil of *Lavandula hybrida*. No contamination or adulteration was detected.