

Sample Information

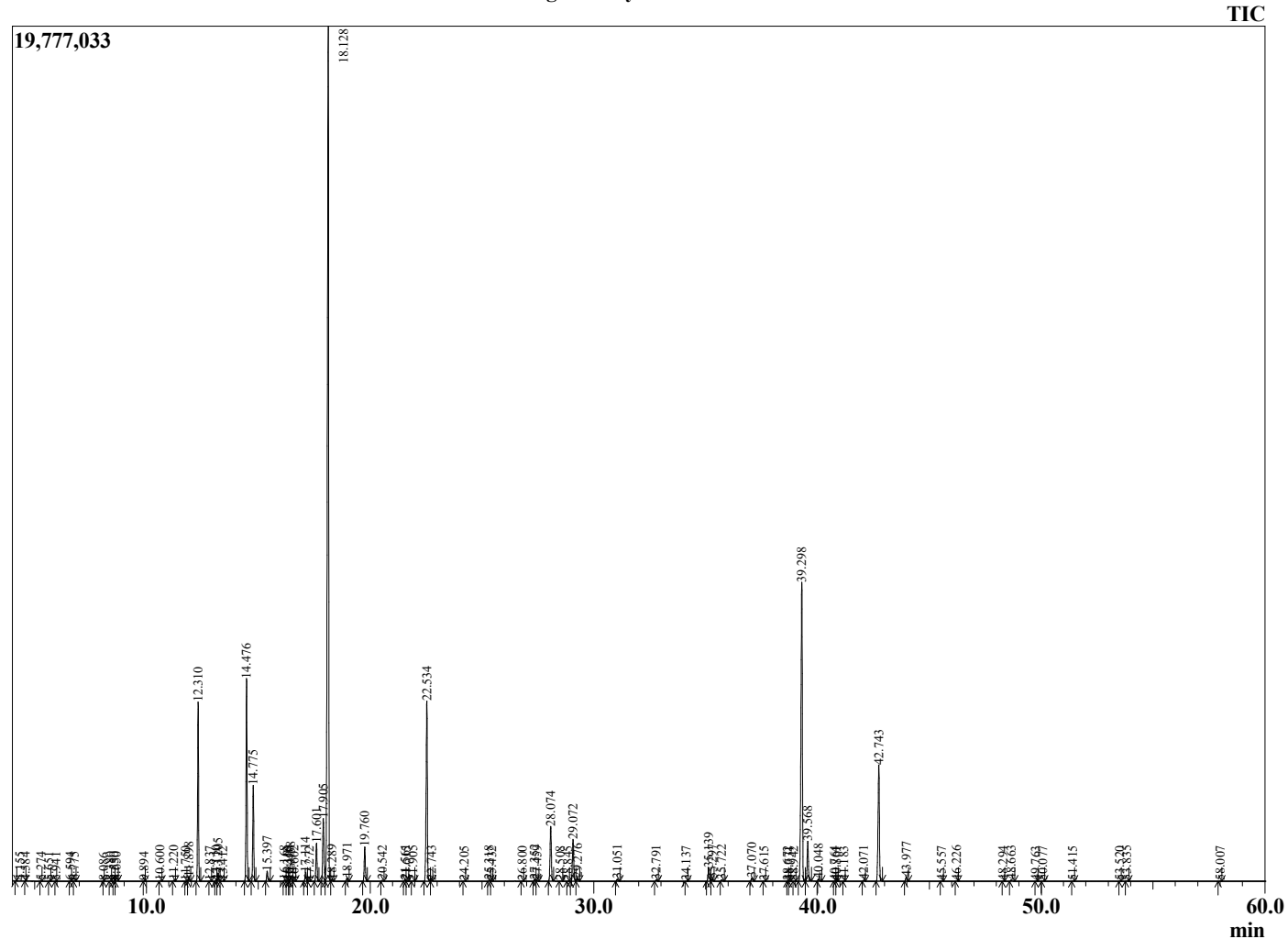
Analyzed by : Dr. Robert S. Pappas
 Analyzed : 12/1/2021 8:25:46 PM
 Sample Type : Essential Oil
 Sample Name : Bay Laurel Oil - Barefut
 Sample ID : 0105
 Injection Volume : 0.10
 Instrument ID : GC-4



Peak Report TIC

R.Time	Name	Area%
4.155	2-Methylbutanal	0.01
4.584	2-Ethylfuran	0.00
5.274	Methyl pyrrole	0.01
5.651	Ethyl isobutyrate	0.01
5.941	Unidentified	0.00
6.594	Isopropyl isobutyrate	0.02
6.775	Hexanal	0.02
8.086	Isopropyl butyrate	0.00
8.380	Ethyl 2-methylbutyrate	0.01
8.550	Ethyl isovalerate	0.02
8.650	(3Z)-Hexenol	0.02
9.894	Isopropyl-2-methylbutyrate	0.01
10.600	Heptan-2-ol	0.02
11.220	Isobutyl isobutyrate	0.03
11.750	Tricyclene	0.00
11.898	alpha-Thujene	0.14
12.310	alpha-Pinene	5.87
12.837	Thuja-2,4(10)diene	0.01
13.110	alpha-Fenchene	0.04
13.205	Camphene	0.27
13.412	Unidentified	0.01
14.476	Sabinene	7.10
14.775	beta-Pinene	3.36
15.397	Myrcene	0.40
16.168	Isobutyl-2-methylbutyrate	0.05
16.313	Pseudolimonene	0.02
16.400	Unidentified	0.01
16.458	alpha-Phellandrene	0.18
16.602	delta-3-Carene	0.02
17.114	alpha-Terpinene	0.34
17.272	ortho-Cymene	0.01
17.601	para-Cymene	1.49
17.905	Limonene	2.87
18.128	1,8-Cineole	40.04
18.289	cis-beta-Ocimene	0.06
18.971	trans-beta-Ocimene	0.13
19.760	gamma-Terpinene	1.37
20.542	trans-Sabinene hydrate	0.03
21.561	Terpinolene	0.06
21.615	trans-Linalool oxide (furanoid)	0.01
21.905	2-Nonanone	0.03
22.534	Linalool	7.72
22.743	Hotrienol	0.02
24.205	cis-para-Menth-2-en-1-ol	0.01
25.318	trans-Pinocarveol	0.03
25.432	trans-para-Menth-2-en-1-ol	0.01
26.800	Pinocarpone	0.01
27.352	delta-Terpineol	0.07
27.459	Borneol	0.04
28.074	Terpinen-4-ol	2.39
28.508	para-Cymen-8-ol + trans-Isocarveol	0.02
28.845	Unidentified	0.01
29.072	alpha-Terpineol	1.92
29.276	Estragole	0.12
31.051	Nerol	0.09
32.791	Linalyl acetate	0.05
34.137	Unidentified	0.01
35.139	Bornyl acetate	0.64
35.297	Isobornyl acetate	0.08
35.722	2-Undecanone	0.06
37.070	delta-Terpinyl acetate	0.15
37.615	Unidentified	0.01

Chromatogram Bay Laurel Oil - Barefut



Comments:

The analysis of this Bay Laurel batch sample meets the expected chemical profile for authentic essential oil of *Laurus nobilis*. No contamination or adulteration was detected. The results provided in this GCMS quality analysis reflect the chemical composition of the oil and lot referenced above on the date of analysis.

R.Time	Name	Area%
38.672	Unidentified	0.01
38.731	Unidentified	0.01
38.942	Unidentified	0.01
39.298	alpha-Terpinyl acetate	14.62
39.568	Eugenol	1.68
40.048	Neryl acetate	0.11
40.764	alpha-Ylangene	0.01
40.861	Isolatedene	0.01
41.183	alpha-Copaene	0.01
42.071	beta-Elemene	0.04
42.743	Methyleugenol	5.50
43.977	trans-beta-Caryophyllene	0.20
45.557	trans-Cinnamyl acetate	0.02
46.226	alpha-Humulene	0.03
48.294	beta-Selinene	0.01
48.663	cis-Methyl isoeugenol	0.08
49.763	gamma-Cadinene	0.01
50.077	delta-Cadinene	0.02
51.415	Unidentified	0.02
53.520	Spathulenol	0.01
53.835	Caryophyllene oxide	0.03
58.007	Unidentified	0.01
		100.00