

Sample Information

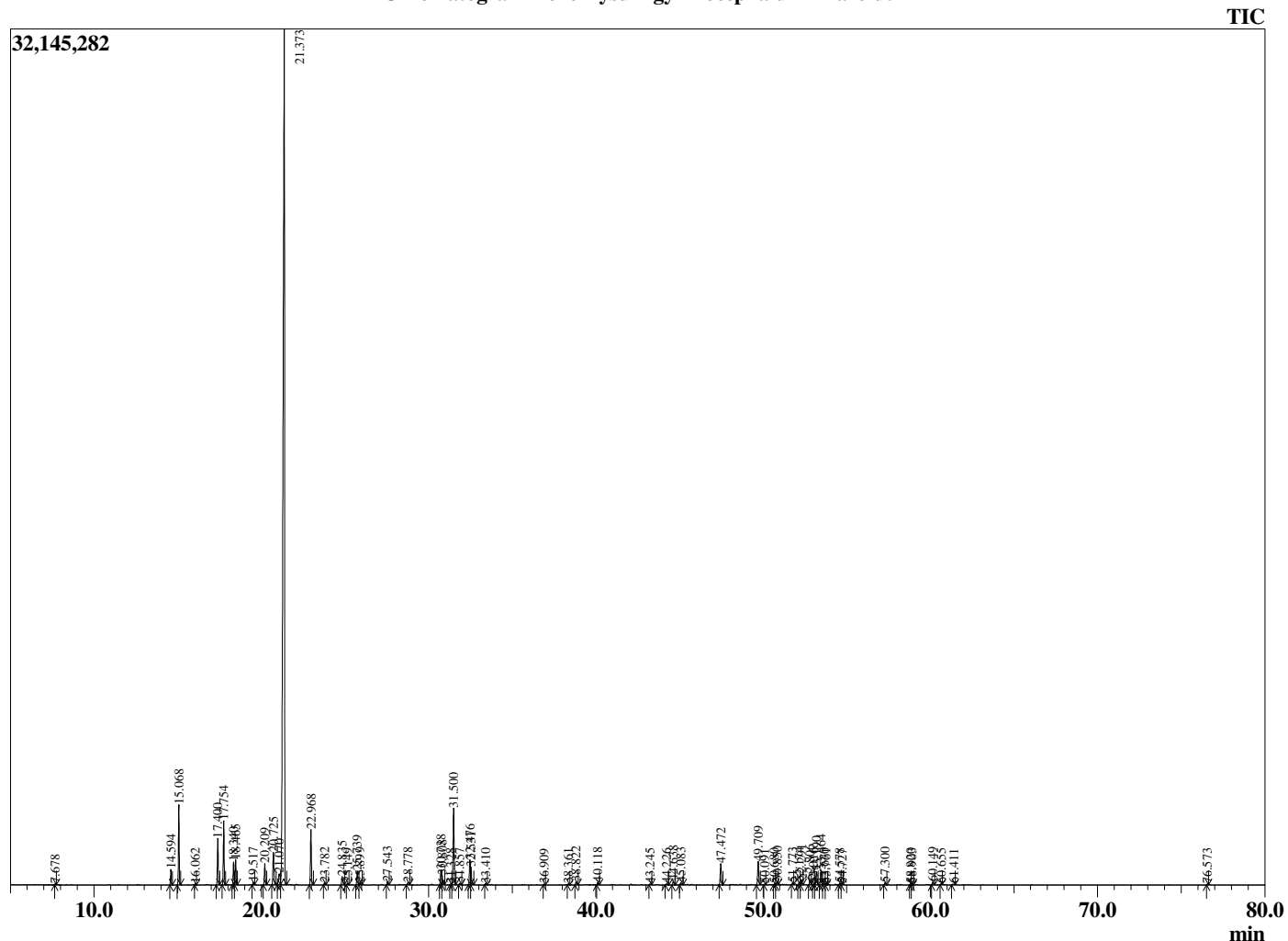
Analyzed by : Dr. Robert S. Pappas
 Analyzed : 5/8/2020 2:08:30 AM
 Sample Type : Essential Oil
 Sample Name : Helichrysum gymnocephalum - Barefut
 Sample ID : 0106
 Injection Volume : 0.10
 Instrument ID : GC-3



Peak Report TIC

R.Time	Name	Area%
7.678	1-Methyl cyclohexa-1,4-diene	0.04
14.594	alpha-Thujene	0.62
15.068	alpha-Pinene	3.11
16.062	Camphene	0.06
17.400	Sabinene	1.94
17.754	beta-Pinene	2.70
18.340	Myrcene	0.95
18.465	2,3-dehydro-1,8-Cineole	1.11
19.517	alpha-Phellandrene	0.12
20.209	alpha-Terpinene	0.96
20.725	para-Cymene	1.76
21.070	Limonene	0.93
21.373	1,8-cineole	67.30
22.968	gamma-Terpinene	2.55
23.782	trans-Sabinene hydrate	0.11
24.835	Terpinolene	0.48
25.149	para-Cymenene	0.07
25.739	Linalool	0.67
25.899	cis-Sabinene hydrate	0.10
27.543	cis-para-Menth-2-en-1-ol	0.16
28.778	trans-para-Menth-2-en-1-ol	0.16
30.738	delta-Terpineol	0.77
30.808	para-Mentha-1,5-dien-8-ol	0.44
31.328	Unidentified	0.04
31.500	Terpinen-4-ol	3.89
31.857	para-Cymen-8-ol	0.08
32.476	alpha-Terpineol	1.41
32.531	Unidentified	0.70
33.410	cis-Piperitol	0.06
36.909	Unidentified	0.04
38.361	Lavandulyl acetate	0.05
38.822	Unidentified	0.16
40.118	Unidentified	0.12
43.245	Unidentified	0.06
44.226	Cyclosativene	0.08
44.638	alpha-Copaene	0.22
45.083	Unidentified	0.12
47.472	beta-Caryophyllene	1.15
49.709	alpha-Humulene	1.27
50.091	cis-Cadina-1(6),4-diene	0.03
50.680	10-beta-H-Cadina-1(6),4-diene	0.05
50.850	trans-Cadina-1(6),4-diene	0.18
51.773	beta-Selinene	0.09
52.174	Unidentified	0.18
52.291	alpha-Murolene	0.28
52.806	beta-Bisabolene	0.25
53.016	Unidentified	0.03
53.190	gamma-Cadinene	0.71
53.464	delta-Cadinene	0.80
53.670	trans-Calamenene	0.10
53.761	Zonarene	0.06
54.578	alpha-Cadinene	0.07
54.727	Unidentified	0.03
57.300	Caryophyllene oxide	0.14
58.820	Unidentified	0.06
58.903	Humulene epoxide II	0.07
60.149	Unidentified	0.16
60.655	Muurolol <alpha> (=Torreyol)	0.05
61.411	tau-Cadinol	0.07
76.573	Geranyl-alpha-terpinene	0.04
		100.00

Chromatogram Helichrysum gymnocephalum - Barefut



Comments:

The analysis of this Helichrysum gymnocephalum batch sample meets the expected chemical profile for authentic essential oil of Helichrysum gymnocephalum. No contamination or adulteration was detected. The results provided in this GCMS quality analysis reflect the chemical composition of the oil and lot referenced above on the date of analysis.