

Sample Information

Analyzed by : Dr. Robert S. Pappas
 Analyzed : 9/24/2019 7:06:45 PM
 Sample Type : Essential Oil
 Sample Name : Pink Grapefruit - Barefut
 Sample ID : 0107
 Injection Volume : 0.10
 Instrument ID: : GC-4

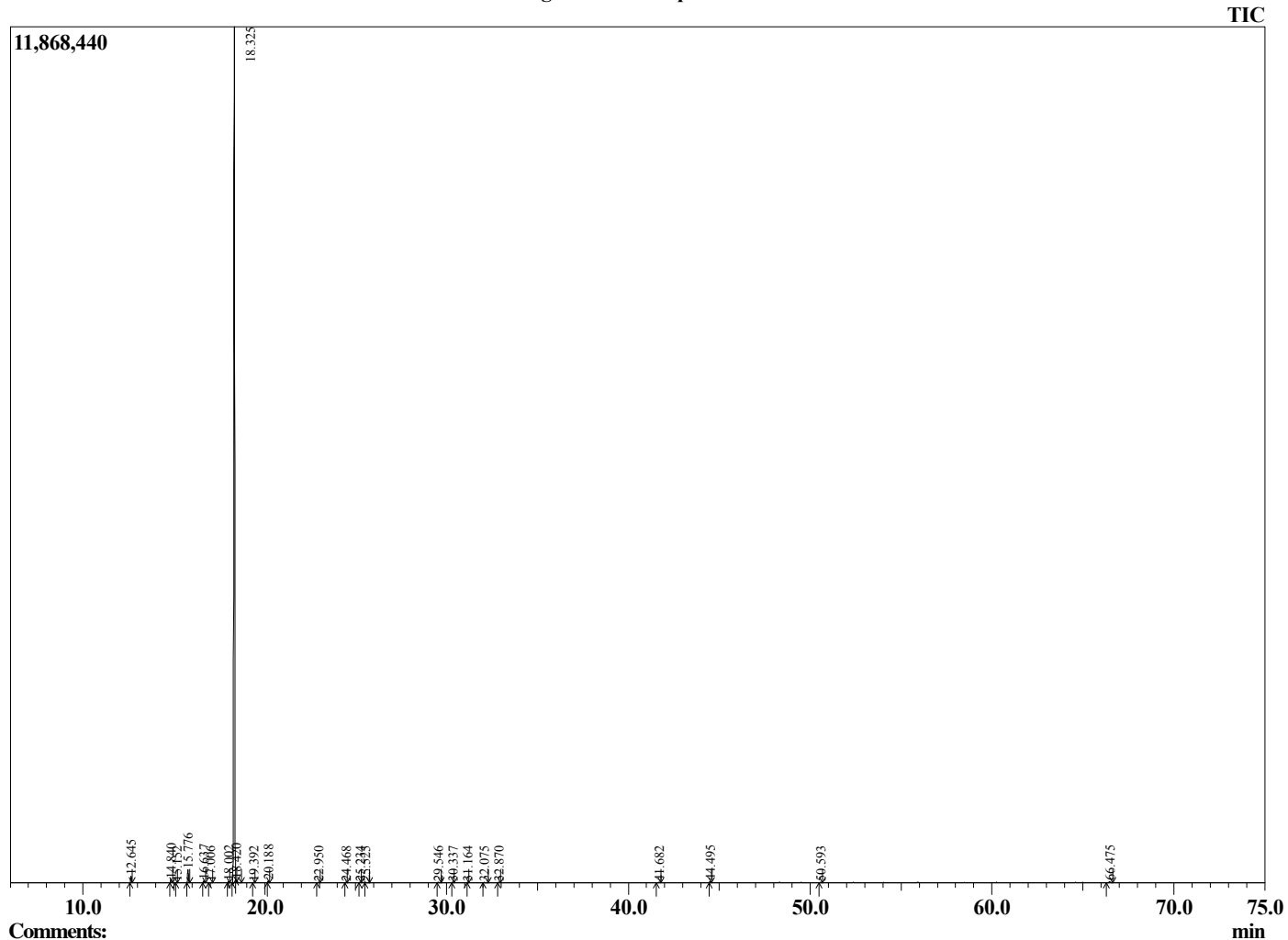


Peak Report TIC

R.Time	Name	Area%
12.645	alpha-Pinene	0.60
14.840	Sabinene	0.38
15.152	beta-Pinene	0.06
15.776	Myrcene	1.31
16.637	Octanal	0.21
17.006	3-Carene	0.03
18.002	para-Cymene	0.11
18.325	Limonene	96.25
18.420	Z-beta-Ocimene	0.02
19.392	E-beta-Ocimene	0.05
20.188	gamma-Terpinene	0.15
22.950	Linalool	0.05
24.468	trans-p-Mentha-2,8-dienol	0.04
25.234	cis-Limonene oxide	0.06
25.525	trans-Limonene oxide	0.05
29.546	alpha-Terpineol	0.07
30.337	Decanal	0.07
31.164	trans-p-mentha-1(7),8-dien-2-ol	0.04
32.075	cis-Carveol	0.05
32.870	Carvone	0.09
41.682	alpha-Copaene	0.05
44.495	beta-Caryophyllene	0.11
50.593	delta-Cadinene	0.06
66.475	Nootkatone	0.13
		100.00

This report is valid for 1 year from the analyzed date.

Chromatogram Pink Grapefruit - Barefut



Comments:

The analysis of this Grapefruit, Pink batch sample meets the expected chemical profile for authentic essential oil of *Citrus paradisi*. No contamination or adulteration was detected.