

Sample Information

Analyzed by : Dr. Robert S. Pappas
 Analyzed : 4/10/2019 5:05:54 PM
 Sample Type : Essential Oil
 Sample Name : Pink Grapefruit - Barefut
 Sample ID : 0106
 Injection Volume : 0.10
 Instrument ID : GC-2

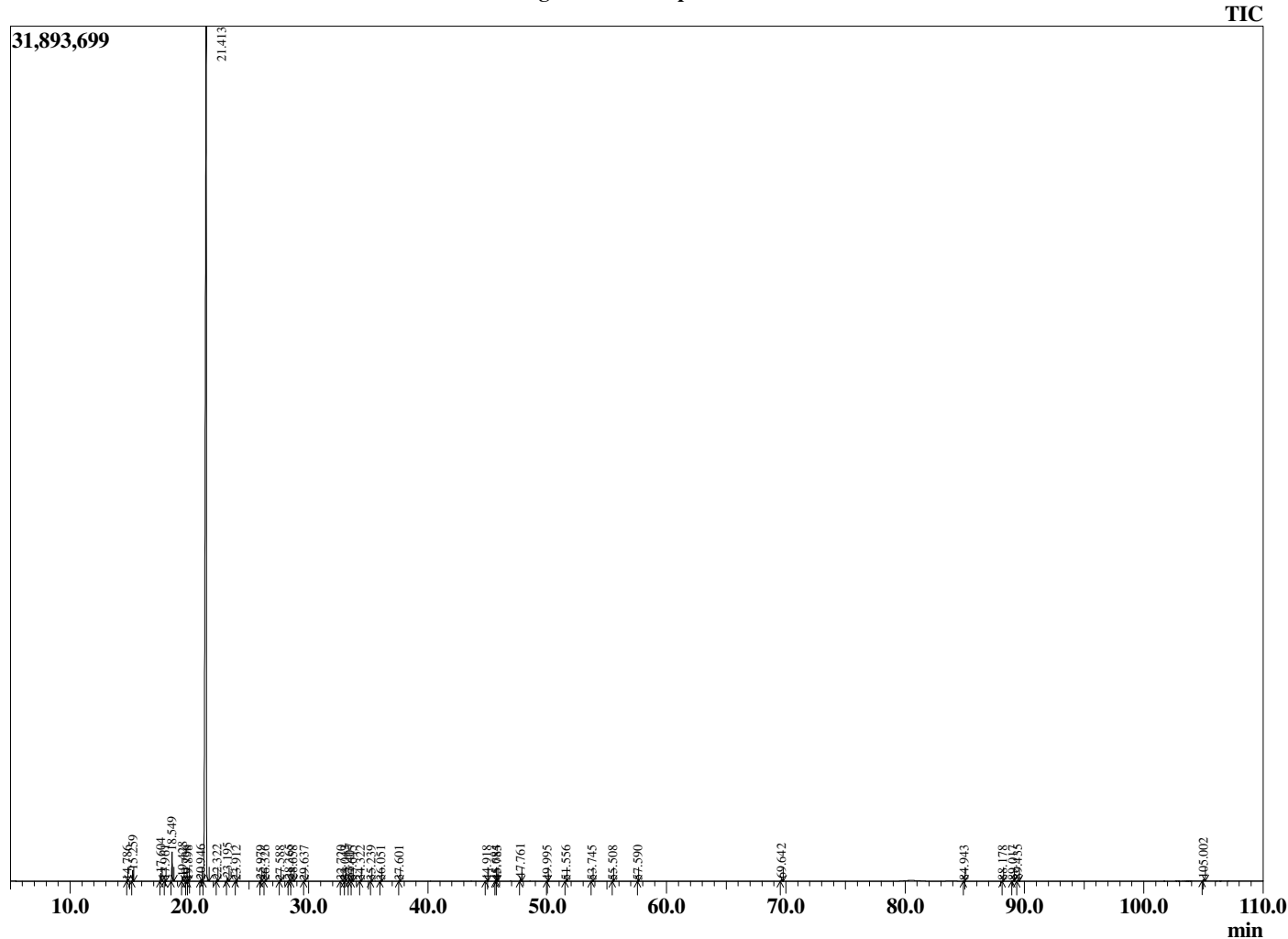


Peak Report TIC

R.Time	Name	Area%
14.786	alpha-Thujene	0.01
15.259	alpha-Pinene	0.55
17.604	Sabinene	0.41
17.961	beta-Pinene	0.07
18.549	Myrcene	1.58
19.428	Octanal	0.25
19.736	alpha-Phellandrene	0.01
19.898	delta-3-Carene	0.02
20.946	para-Cymene	0.09
21.413	Limonene	95.29
22.322	trans-beta-Ocimene	0.06
23.195	gamma-Terpinene	0.20
23.912	n-Octanol	0.02
25.979	Linalool	0.05
26.326	Nonanal	0.02
27.588	trans-para-Mentha-2,8-dienol	0.03
28.365	cis-Limonene oxide	0.09
28.658	trans-Limonene oxide	0.07
29.637	Citronellal	0.02
32.720	alpha-Terpineol	0.04
33.043	Unidentified	0.02
33.407	Decanal	0.15
33.645	Octyl acetate	0.02
34.322	trans-Carveol	0.03
35.239	cis-Carveol	0.02
36.051	Carvone	0.03
37.601	Geranial	0.01
44.918	alpha-Copaene	0.07
45.684	beta-Cubebene	0.03
45.785	beta-Elemene	0.01
47.761	beta-Caryophyllene	0.18
49.995	alpha-Humulene	0.02
51.556	Germacrene D	0.02
53.745	delta-Cadinene	0.04
55.508	Elemol	0.01
57.590	Caryophyllene oxide	0.01
69.642	Nootkatone	0.15
84.943	Osthole	0.02
88.178	Unidentified furanocoumarin	0.01
89.017	Isogeijerin	0.05
89.435	Unidentified furanocoumarin	0.08
105.002	Auraptin	0.14
		100.00

This report is valid for 1 year from the analyzed date.

Chromatogram Pink Grapefruit - Barefut



Comments:

The analysis of this Pink Grapefruit batch sample meets the expected chemical profile for authentic essential oil of *Citrus paradisi*. No contamination or adulteration was detected.