

Sample Information

Analyzed by : Dr. Robert S. Pappas
 Analyzed : 9/26/2019 4:32:52 AM
 Sample Type : Essential Oil
 Sample Name : Ginger - Barefut
 Sample ID : 0104
 Injection Volume : 0.10
 Instrument ID : GC-2

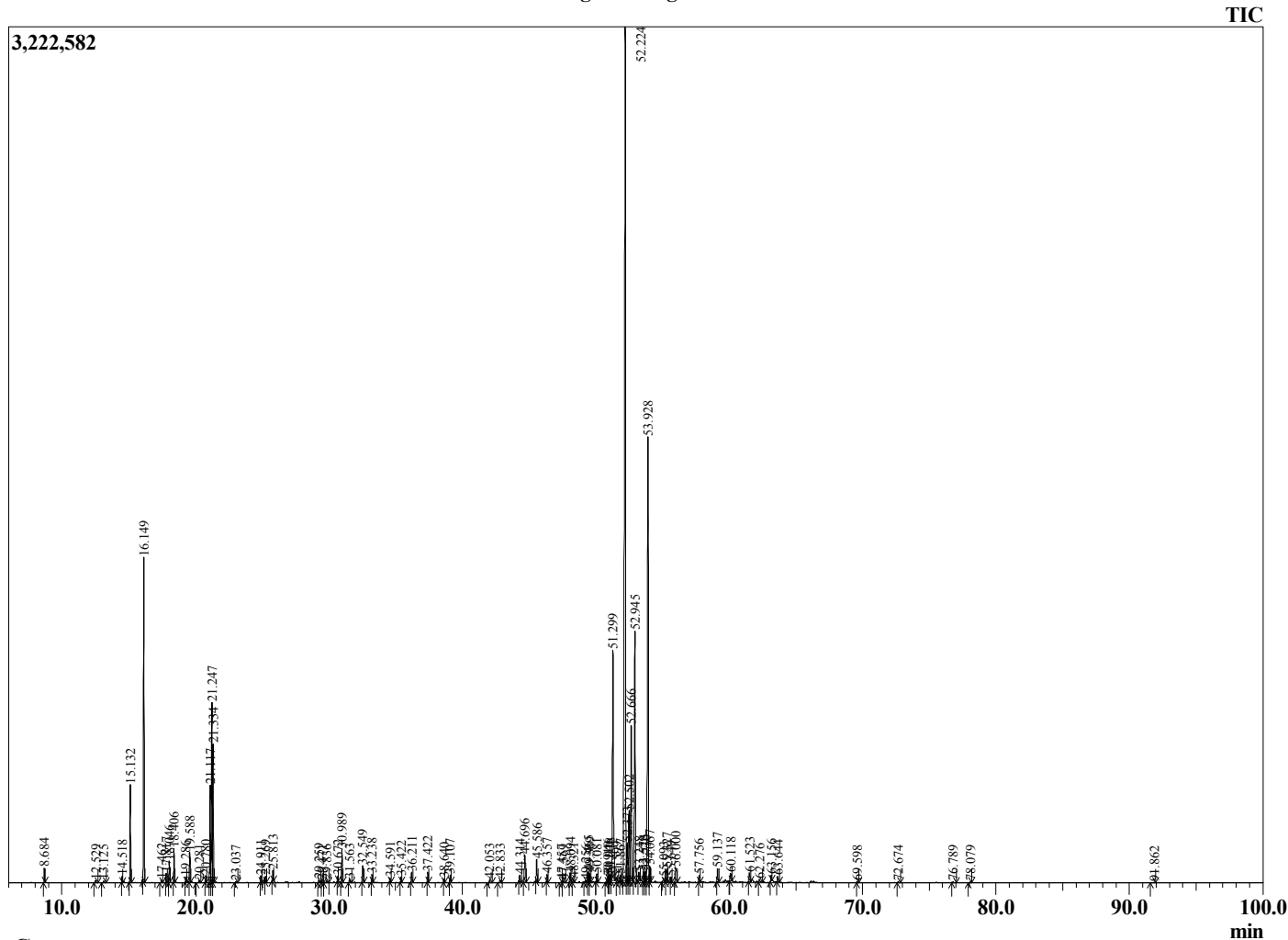


Peak Report TIC

R.Time	Name	Area%
8.684	Hexanal	0.24
12.529	2-Heptanone	0.05
13.125	2-Heptanol	0.05
14.518	Tricyclene	0.12
15.132	alpha-Pinene	1.96
16.149	Camphene	6.81
17.462	Sabinene	0.06
17.817	beta-Pinene	0.19
18.046	6-methyl-5-Hepten-2-one	0.45
18.406	Myrcene	0.69
19.286	Octanal	0.10
19.588	alpha-Phellandrene	0.65
20.281	alpha-Terpinene	0.06
20.780	para-Cymene	0.14
21.117	Limonene	2.38
21.247	beta-Phellandrene	4.22
21.334	1,8-Cineole	2.93
23.037	gamma-Terpinene	0.04
24.911	Terpinolene	0.15
25.269	Rosefuran	0.12
25.813	Linalool	0.24
29.259	Camphor	0.09
29.471	Citronellal	0.05
29.836	trans-beta-Terpineol	0.05
30.672	Isoborneol	0.11
30.989	Borneol	0.83
31.563	Terpinen-4-ol	0.10
32.549	alpha-Terpneol	0.44
33.238	Decanal	0.18
34.591	Nerol	0.08
35.422	Neral	0.13
36.211	Geraniol	0.27
37.422	Geranial	0.24
38.640	Bornyl acetate	0.08
39.107	2-Undecanone	0.17
42.053	delta-Elementene	0.09
42.833	Citronellyl acetate	0.09
44.314	Cyclosativene	0.22
44.696	Geranyl acetate	1.03
45.586	beta-Elementene	0.56
46.357	7-epi-Sesquithujene	0.19
47.457	beta-Ylangene	0.05
47.569	beta-Caryophyllene	0.06
48.094	gamma-Elementene	0.21
48.321	trans-alpha-Bergamotene	0.10
49.256	6,9-Guaiadiene	0.06
49.465	Z-beta-Farnesene	0.26
49.569	E-beta-Farnesene	0.22
50.081	Alloaromadendrene	0.20
50.910	Ginger unidentified	0.16
50.946	trans-Cadina-1(6),4-diene	0.13
51.078	gamma-Curcumene	0.17
51.299	Ar-Curcumene	7.51
51.599	alpha-Muurolene	0.15
51.867	beta-Selinene	0.21
52.224	alpha-Zingiberene	31.64
52.373	alpha-Selinene	1.27
52.502	trans-Muurolo-4(14),5-diene	2.05
52.666	E,E-alpha-Farnesene	4.24
52.945	beta-Bisabolene	7.11
53.248	gamma-Cadinene	0.27
53.578	delta-Cadinene	0.26

This report is valid for 1 year from the analyzed date.

Chromatogram Ginger - Barefut



Comments

The analysis of this Ginger batch sample meets the expected chemical profile for authentic essential oil of *Zingiber officinale*. No contamination or adulteration was detected.

R.Time	Name	Area%
53.730	alpha-Panasinsene	0.29
53.928	beta-Sesquiphellandrene	13.41
54.067	E-gamma-Bisabolene	0.40
55.093	Ginger unidentified	0.17
55.327	alpha-Elemol	0.37
55.649	7-epi-cis-Sesquisabinene hydrate	0.12
56.000	E-Nerolidol	0.61
57.756	7-epi-trans-Sesquisabinene hydrate	0.18
59.137	Ginger unidentified	0.36
60.118	Ginger unidentified	0.30
61.523	alpha-Eudesmol	0.30
62.276	beta-Bisabolol	0.09
63.156	Ginger unidentified	0.13
63.644	Ginger unidentified	0.17
69.598	Ginger unidentified	0.03
72.674	Ginger unidentified	0.03
76.789	Geranyl-p-cymene	0.03
78.079	Geranyl-alpha-Terpinene	0.03
91.862	6-Shoagol	0.01
		100.00