

Sample Information

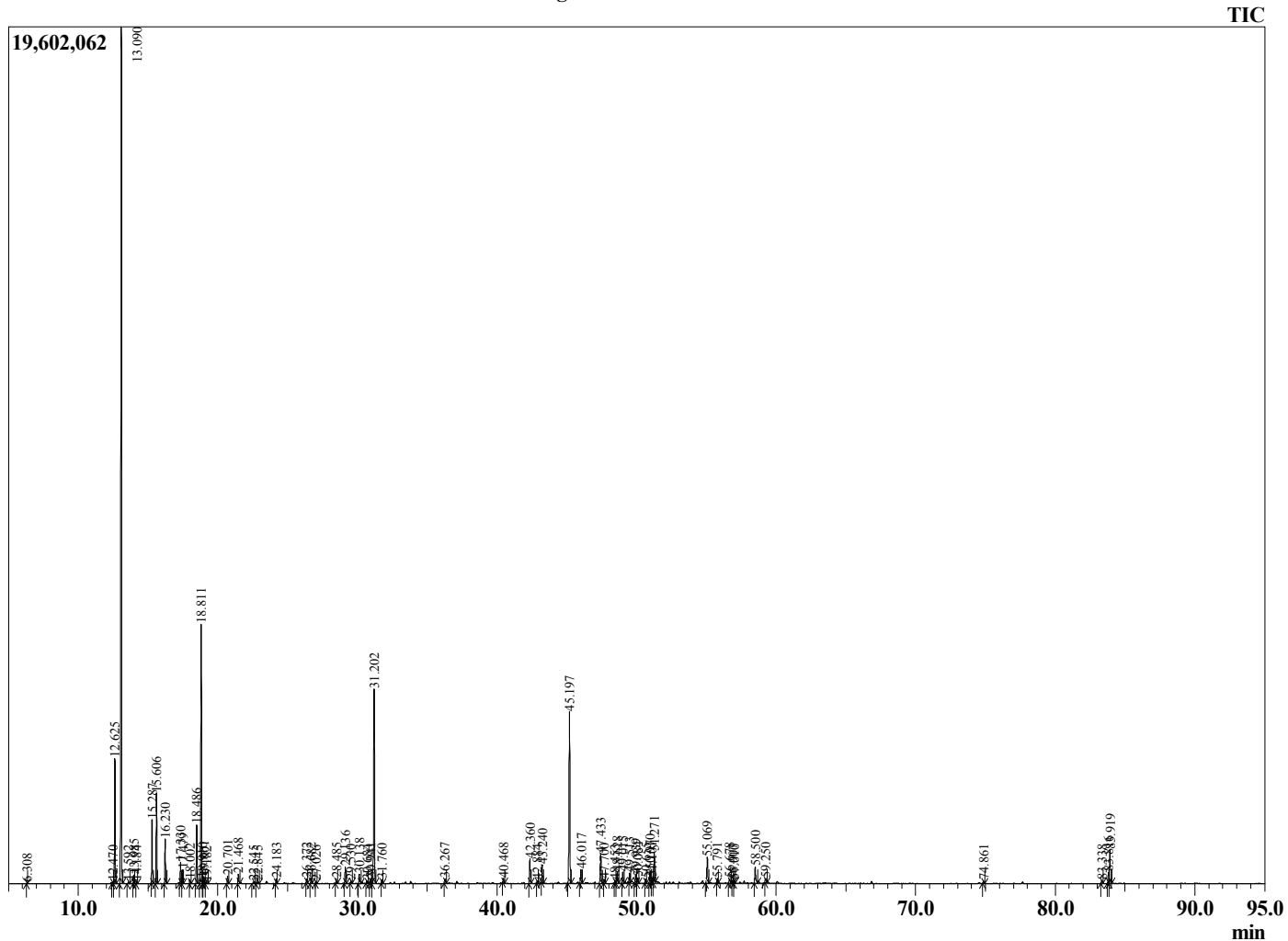
Analyzed by : Dr. Robert S. Pappas
 Analyzed : 4/25/2020 1:10:47 AM
 Sample Type : Essential Oil
 Sample Name : Frankincense Vital - Barefut
 Sample ID : 0103
 Injection Volume : 0.10
 Instrument ID : GC-2



Peak Report TIC

R.Time	Name	Area%
6.308	Toluene	0.01
12.470	Tricyclene	0.06
12.625	alpha-Thujene	4.33
13.090	alpha-Pinene	35.90
13.592	Thuja-2,4(10)diene	0.05
13.985	Camphene	0.30
14.184	Verbenene	0.07
15.287	Sabinene	2.34
15.606	beta-Pinene	3.35
16.230	Myrcene	1.67
17.330	alpha-Phellandrene	0.77
17.479	3-Carene	0.52
18.002	alpha-Terpinene	0.16
18.486	para-Cymene	2.34
18.811	Limonene	10.52
18.910	beta-Phellandrene	0.16
19.001	1,8-Cineole	0.28
19.182	(Z)-beta-Ocimene	0.07
20.701	gamma-Terpinene	0.31
21.468	1-Octanol	0.41
22.545	Terpinolene	0.09
22.845	para-Cymenene	0.09
24.183	Thujol	0.18
26.372	trans-Pinocarveol	0.19
26.682	trans-Verbenol	0.20
27.026	Unidentified	0.08
28.485	p-Mentha-1,5-dien-8-ol	0.19
29.136	Terpinen-4-ol	0.72
29.530	para-Cymen-8-ol	0.11
30.138	alpha-Terpineol	0.52
30.684	alpha-Phellandrene epoxide	0.11
30.941	Verbenone	0.20
31.202	Octyl acetate	9.17
31.760	trans-Carveol	0.16
36.267	Bornyl acetate	0.24
40.468	alpha-Cubebene	0.18
42.360	alpha-Copaene	1.22
42.884	beta-Bourbonene	0.11
43.240	beta-Elemene	0.79
45.197	trans-beta-Caryophyllene	8.84
46.017	trans-alpha-Bergamotene	0.67
47.433	alpha-Humulene	1.48
47.700	Alloaromadendrene	0.19
48.453	cis-Muurolo-4(14),5-diene	0.13
48.628	trans-Cadina-1(6),4-diene	0.55
49.015	Germacrene D	0.54
49.513	beta-Selinene	0.43
49.939	alpha-Selinene	0.44
50.084	alpha-Muurolole	0.26
50.655	beta-Bisabolene	0.18
50.970	gamma-Cadinene	0.58
51.101	Cubebol	0.23
51.271	delta-Cadinene	1.41
55.069	Caryophyllene oxide	1.39
55.791	Viridiflorol	0.20
56.678	Humulene epoxide II	0.26
56.907	Frankincense unidentified	0.12
57.010	1-epi-Cubenol	0.11
58.500	alpha-Muurolol	0.93
59.250	alpha-Cadinol	0.24
74.861	Neocembrene A	0.11
83.338	Unidentified	0.14

Chromatogram Frankincense Vital - Barefut



Comments:

The analysis of this Frankincense batch sample meets the expected chemical profile for authentic essential oil of *Boswellia carterii*. No contamination or adulteration was detected. The results provided in this GCMS quality analysis reflect the chemical composition of the oil and lot referenced above on the date of analysis.

R.Time	Name	Area%
83.816	Incensole	0.49
83.919	Serratol	1.90
		100.00