

Sample Information

Analyzed by : Dr. Robert S. Pappas  
 Analyzed : 4/10/2019 1:09:28 PM  
 Sample Type : Essential Oil  
 Sample Name : Frankincense Vital - Barefut  
 Sample ID : 0102  
 Injection Volume : 0.10  
 Instrument ID : GC-2

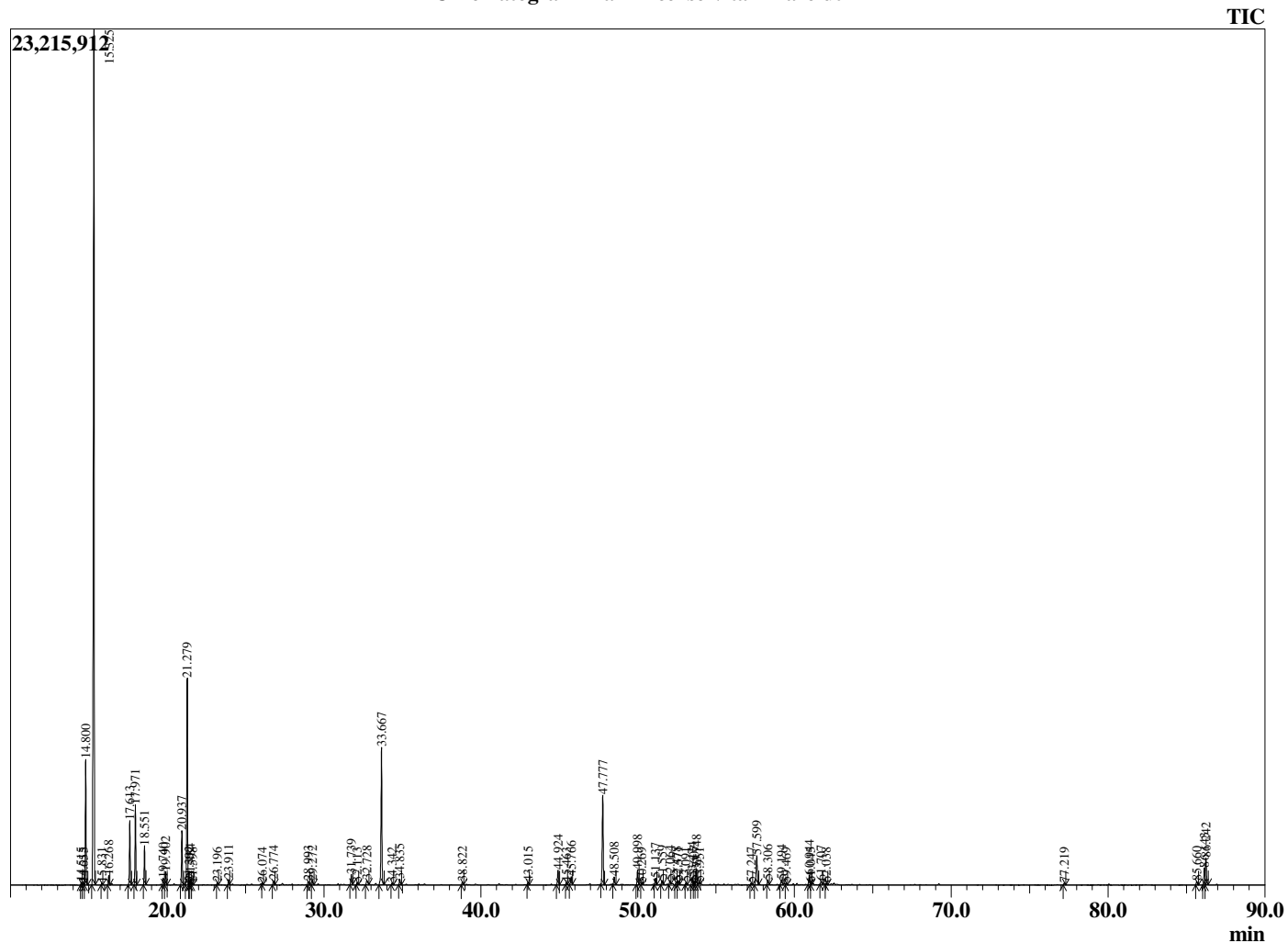


Peak Report TIC

R.Time	Name	Area%
14.515	Hashishene	0.11
14.655	Tricyclene	0.07
14.800	alpha-Thujene	5.22
15.325	alpha-Pinene	45.13
15.831	Thuja-2,4(10)diene	0.08
16.268	Camphene	0.38
17.613	Sabinene	2.78
17.971	beta-Pinene	3.46
18.551	Myrcene	1.66
19.740	alpha-Phellandrene	0.31
19.902	delta-3-Carene	0.60
20.937	para-Cymene	2.58
21.279	Limonene	9.80
21.392	beta-Phellandrene	0.14
21.484	1,8-Cineole	0.27
21.598	cis-beta-Ocimene	0.09
23.196	gamma-Terpinene	0.13
23.911	1-Octanol	0.23
26.074	alpha-Pinene oxide	0.07
26.774	Thujol isomer	0.22
28.993	trans-Pinocarveol	0.21
29.272	trans-Verbenol	0.19
31.739	Terpinen-4-ol	0.52
32.113	para-Cymen-8-ol	0.12
32.728	alpha-Terpineol	0.33
33.667	Octyl acetate	7.18
34.342	trans-Carveol	0.09
34.835	Decyl methyl ether	0.28
38.822	Bornyl acetate	0.15
43.015	alpha-Cubebene	0.14
44.924	alpha-Copaene	0.83
45.463	beta-Bourbonene	0.11
45.766	beta-Elemene	0.46
47.777	beta-Caryophyllene	5.05
48.508	trans-alpha-Bergamotene	0.42
49.998	alpha-Humulene	0.84
50.269	Alloaromadendrene	0.10
51.137	trans-Cadina-1(6),4-diene	0.34
51.559	Germacrene D	0.21
52.064	beta-Selinene	0.20
52.478	alpha-Selinene	0.20
52.571	alpha-Murolene	0.19
53.091	beta-Bisabolene	0.13
53.474	gamma-Cadinene	0.42
53.607	Cubebol	0.20
53.748	delta-Cadinene	0.84
53.951	cis-Calamenene	0.11
57.247	Spathulenol	0.11
57.599	Caryophyllene oxide	1.98
58.306	Viridiflorol	0.25
59.194	Humulene epoxide II	0.35
59.469	1,10-di-epi-Cubanol	0.11
60.944	alpha-Muurolol (=Torreyol)	0.57
61.045	epi-alpha-Cadinol	0.07
61.707	Unidentified	0.21
62.038	Unidentified	0.10
77.219	Elemene dimer	0.12
85.660	Unidentified	0.22
86.143	Incensole	1.04
86.242	Serratol	1.65
		100.00

This report is valid for 1 year from the analyzed date.

Chromatogram Frankincense Vital - Barefut



Comments:

The analysis of this Frankincense Vital Oil batch sample meets the expected chemical profile for authentic essential oil of *Boswellia carterii*. No contamination or adulteration was detected.