

Sample Information

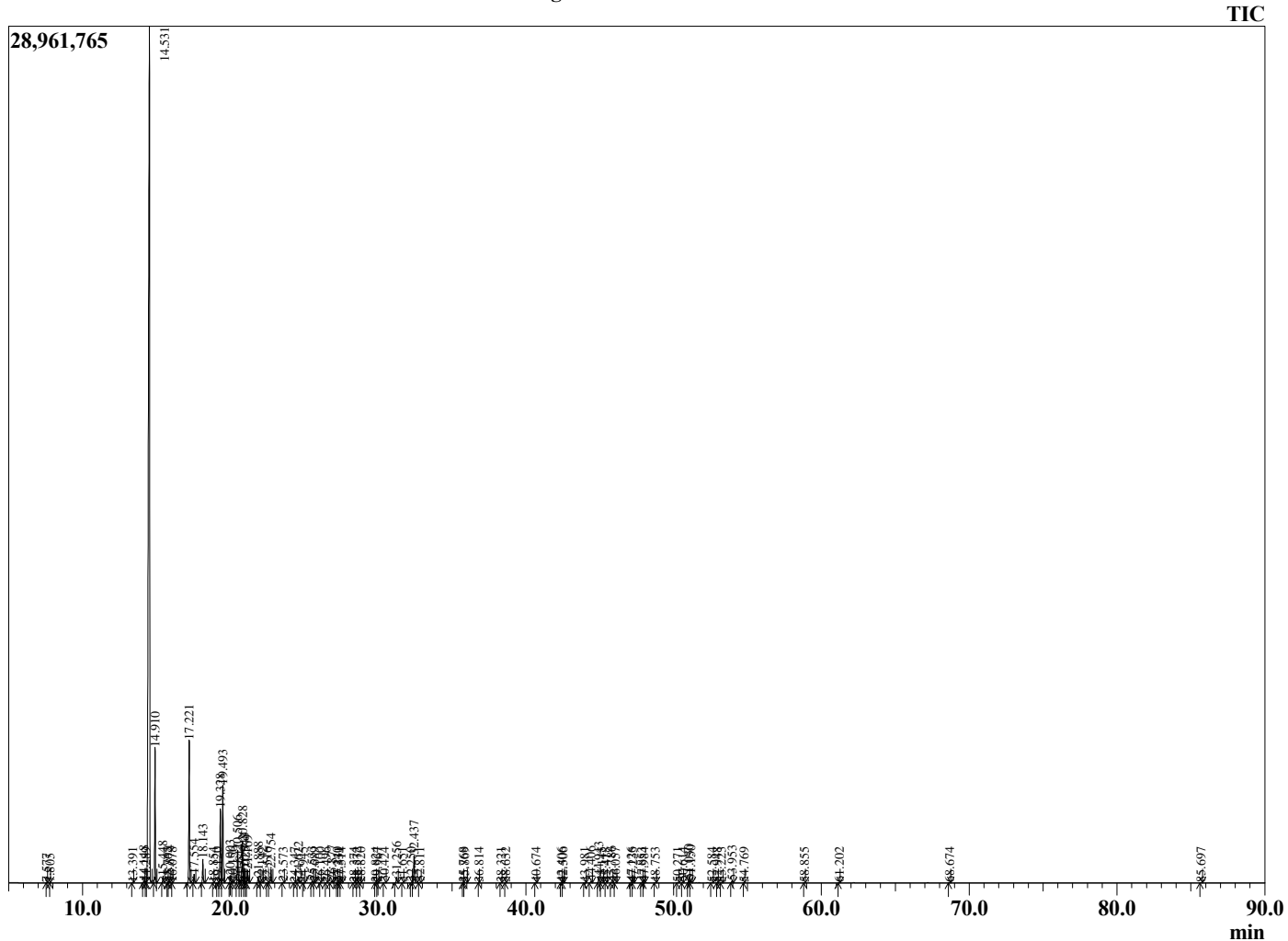
Analyzed by : Dr. Robert S. Pappas
 Analyzed : 11/24/2020 10:12:10 PM
 Sample Type : Essential Oil
 Sample Name : Frankincense - Barefut
 Sample ID : 0104
 Injection Volume : 0.10
 Instrument ID : GC-2



Peak Report TIC

R.Time	Name	Area%
7.577	Toluene	0.01
7.805	Unidentified	0.00
13.391	Unidentified	0.01
14.148	Hashishene	0.08
14.289	Tricyclene	0.00
14.531	alpha-Thujene	67.75
14.910	alpha-Pinene	5.52
15.448	Thuja-2,4(10)diene	0.28
15.765	alpha-Fenchene	0.01
15.874	Camphene	0.07
16.078	Unidentified	0.00
17.221	Sabinene	6.45
17.554	beta-Pinene	0.38
18.143	Myrcene	1.05
18.854	Unidentified	0.01
19.120	Unidentified	0.00
19.328	alpha-Phellandrene	3.52
19.493	delta-3-Carene	4.48
20.003	alpha-Terpinene	0.34
20.156	meta-Cymene	0.05
20.506	para-Cymene	1.56
20.644	Unidentified	0.15
20.828	Limonene	1.98
20.948	beta-Phellandrene	0.67
21.025	1,8-Cineole	0.02
21.169	(Z)-beta-Ocimene	0.60
21.888	(E)-beta-Ocimene	0.28
22.142	Unidentified	0.04
22.516	Unidentified	0.02
22.754	gamma-Terpinene	0.67
23.573	trans-Sabinene hydrate	0.03
24.347	Isoterpinolene	0.01
24.622	Terpinolene	0.29
24.945	Dehydro-para-cymene	0.01
25.533	Linalool	0.07
25.689	cis-Sabinene hydrate	0.03
26.100	alpha-Thujone	0.01
26.496	Unidentified	0.02
26.877	beta-Thujone	0.13
27.240	Unidentified	0.01
27.331	cis-para-Menth-2-en-1-ol	0.01
27.514	allo-Ocimene	0.03
28.374	trans-Pinocarveol	0.02
28.572	trans-para-Menth-2,8-dien-1-ol	0.01
28.820	trans-Verbenol	0.01
29.824	Unidentified	0.01
29.967	alpha-Phellandrene-8-ol	0.01
30.424	Unidentified	0.03
31.256	Terpinen-4-ol	0.30
31.651	para-Cymen-8-ol	0.01
32.250	alpha-Terpineol	0.03
32.437	Estragole	1.47
32.811	alpha-Phellandrene epoxide	0.03
35.768	Unidentified	0.01
35.869	Linalyl acetate	0.03
36.814	Unidentified	0.00
38.321	Bornyl acetate	0.02
38.632	Unidentified	0.01
40.674	Unidentified	0.02
42.406	alpha-Terpinyl acetate	0.02
42.506	alpha-Cubebene	0.01
43.981	Isoledene	0.02

Chromatogram Frankincense - Barefut



Comments:

The analysis of this Frankincense batch sample meets the expected chemical profile for authentic essential oil of *Boswellia serrata*. No contamination or adulteration was detected. The results provided in this GCMS quality analysis reflect the chemical composition of the oil and lot referenced above on the date of analysis.

R.Time	Name	Area%
44.406	alpha-Copaene	0.10
44.943	beta-Bourbonene	0.35
45.145	alpha-Bourbonene	0.03
45.418	Unidentified	0.01
45.786	Methyleugenol	0.05
46.057	Alloaromadendrene	0.04
47.126	beta-Ylangene	0.04
47.235	trans-beta-Caryophyllene	0.02
47.853	beta-Copaene	0.03
47.984	trans-alpha-Bergamotene	0.03
48.753	Unidentified	0.02
50.271	Unidentified	0.01
50.614	Unidentified	0.02
51.030	Germacrene D	0.17
51.150	gamma-Himachelene	0.11
52.584	beta-Bisabolene	0.01
52.948	gamma-Cadinene	0.01
53.223	delta-Cadinene	0.02
53.953	Unidentified	0.13
54.769	Unidentified	0.01
58.855	Unidentified	0.01
61.202	Unidentified	0.01
68.674	Phellandrene dimer	0.02
85.697	Serratol	0.03
		100.00