

Sample Information

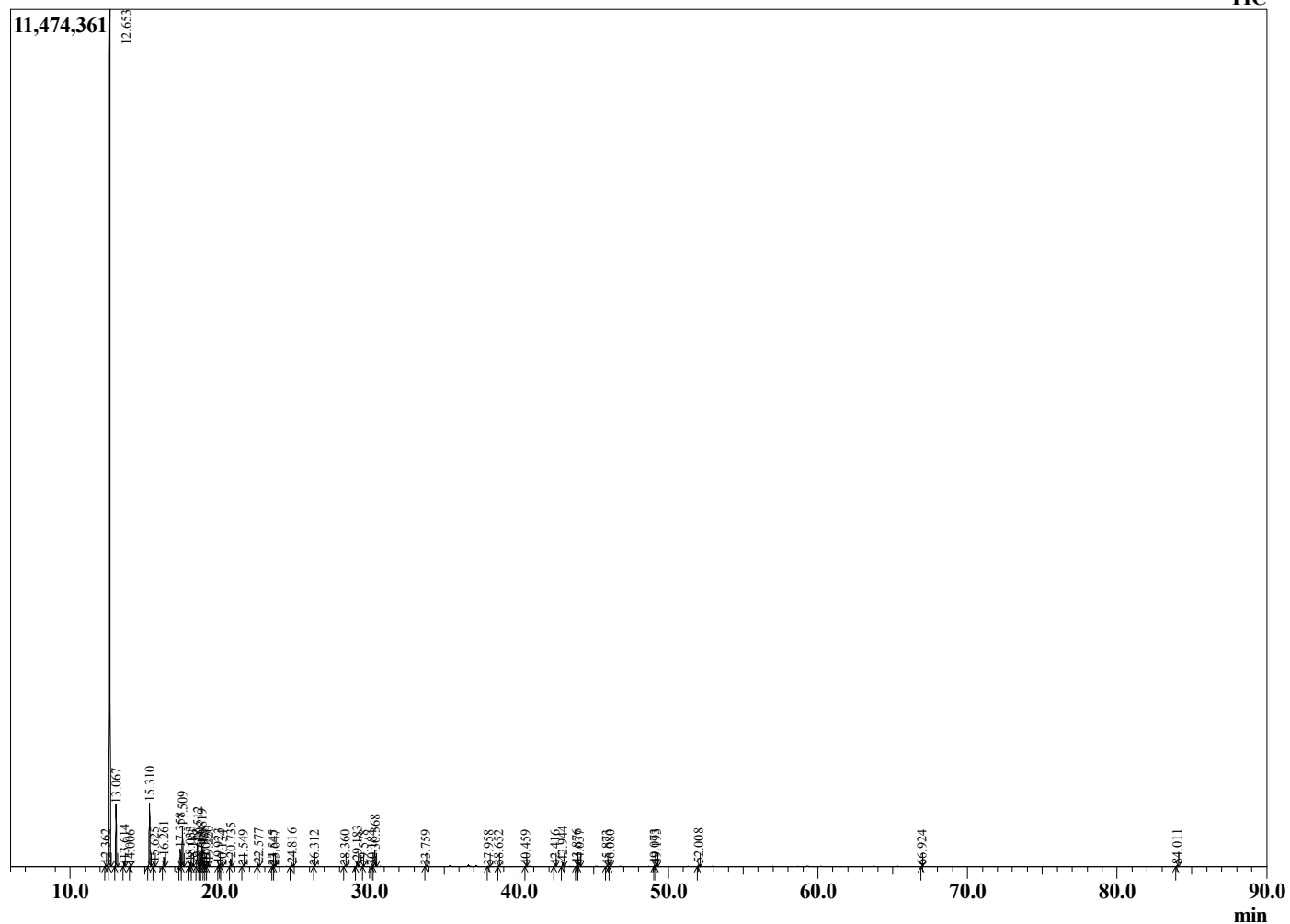
Analyzed by : Dr. Robert S. Pappas
 Analyzed : 11/21/2019 5:41:02 AM
 Sample Type : Essential Oil
 Sample Name : Frankincense - serrata - Barefut
 Sample ID : 0103
 Injection Volume : 0.10
 Instrument ID : GC-3



Peak Report TIC

R.Time	Name	Area%
12.362	Hashishene	0.12
12.653	alpha-Thujene	70.82
13.067	alpha-Pinene	5.20
13.614	Thuja-2,4(10)diene	0.47
14.006	Camphene	0.06
15.310	Sabinene	5.58
15.625	beta-Pinene	0.34
16.261	Myrcene	0.83
17.358	alpha-Phellandrene	1.59
17.509	3-Carene	3.57
18.033	alpha-Terpinene	0.37
18.183	ortho-Cymene	0.10
18.512	para-Cymene	2.14
18.660	Thujol isomer	0.19
18.819	Limonene	2.08
18.928	beta-Phellandrene	0.40
19.037	1,8-Cineole	0.04
19.220	Z-beta-Ocimene	0.36
19.923	E-beta-Ocimene	0.19
20.134	Thujol isomer	0.06
20.735	gamma-Terpinene	0.74
21.549	trans-Sabinene hydrate	0.05
22.577	Terpinolene	0.24
23.545	Linalool	0.08
23.647	cis-Sabinene hydrate	0.05
24.816	beta-Thujone	0.24
26.312	cis-Sabinol	0.03
28.360	trans-Sabinol	0.08
29.183	Terpinen-4-ol	0.60
29.578	para-Cymen-8-ol	0.03
30.184	alpha-Terpineol	0.07
30.368	Estragole	1.70
33.759	Unidentified	0.03
37.958	Unidentified	0.05
38.652	Unidentified	0.05
40.459	Unidentified	0.02
42.416	alpha-Copaene	0.09
42.944	beta-Bourbonene	0.48
43.876	Methyleugenol	0.14
44.037	Alloaromadendrene	0.09
45.873	beta-Copaene	0.04
46.080	trans-alpha-Bergamotene	0.02
49.073	Germacrene D	0.12
49.193	gamma-Himachalene	0.11
52.008	Unidentified	0.19
66.924	alpha-Phellandrene dimer	0.03
84.011	Unidentified	0.11
		100.00

Chromatogram Frankincense - serrata - Barefut



Comments:

The analysis of this Frankincense - serrata batch sample meets the expected chemical profile for authentic essential oil of *Boswellia serrata*. No contamination or adulteration was detected. The results provided in this GCMS quality analysis reflect the chemical composition of the oil and lot referenced above on the date of analysis.