

Sample Information

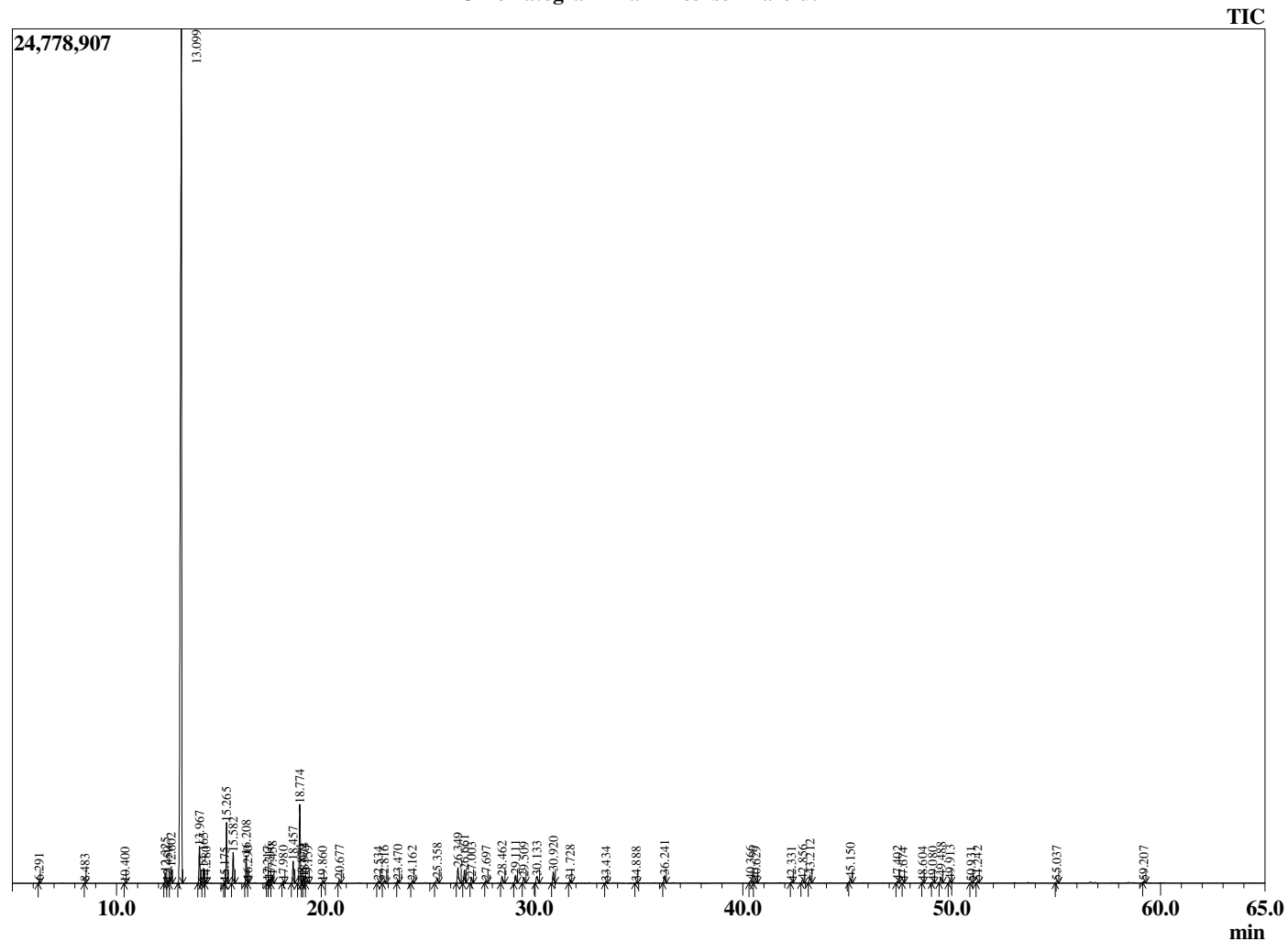
Analyzed by : Dr. Robert S. Pappas  
 Analyzed : 5/16/2020 4:34:17 AM  
 Sample Type : Essential Oil  
 Sample Name : Frankincense - Barefut  
 Sample ID : 0102  
 Injection Volume : 0.10  
 Instrument ID: : GC-3



Peak Report TIC

| R.Time | Name                        | Area%  |
|--------|-----------------------------|--------|
| 6.291  | Toluene                     | 0.08   |
| 8.483  | 6,6-Dimethylhepta-2,4-diene | 0.04   |
| 10.400 | Unidentified                | 0.03   |
| 12.325 | Hashishene                  | 0.57   |
| 12.450 | Tricyclene                  | 0.08   |
| 12.602 | alpha-Thujene               | 0.86   |
| 13.099 | alpha-Pinene                | 69.23  |
| 13.967 | Camphene                    | 2.05   |
| 14.165 | Thuja-2,4(10)diene          | 0.82   |
| 14.280 | Unidentified                | 0.07   |
| 15.175 | Unidentified                | 0.04   |
| 15.265 | Sabinene                    | 3.47   |
| 15.582 | beta-Pinene                 | 1.78   |
| 16.208 | Myrcene                     | 1.65   |
| 16.290 | Unidentified                | 0.12   |
| 17.217 | 1,3,8-para-Menthatriene     | 0.09   |
| 17.316 | alpha-Phellandrene          | 0.26   |
| 17.458 | delta-3-Carene              | 0.44   |
| 17.980 | alpha-Terpinene             | 0.11   |
| 18.457 | para-Cymene                 | 1.39   |
| 18.774 | Limonene                    | 5.05   |
| 18.879 | beta-Phellandrene           | 0.20   |
| 18.974 | 1,8-Cineole                 | 0.34   |
| 19.159 | cis-beta-Ocimene            | 0.19   |
| 19.860 | trans-beta-Ocimene          | 0.09   |
| 20.677 | gamma-Terpinene             | 0.24   |
| 22.534 | Terpinolene                 | 0.13   |
| 22.816 | para-Cymenene               | 0.20   |
| 23.470 | alpha-Pinene oxide          | 0.21   |
| 24.162 | Unidentified                | 0.14   |
| 25.358 | alpha-Campholenal           | 0.43   |
| 26.349 | trans-Pinocarveol           | 1.26   |
| 26.661 | trans-Verbenol              | 0.87   |
| 27.003 | alpha-Phellandren-8-ol      | 0.40   |
| 27.697 | Pinocamphone                | 0.15   |
| 28.462 | para-Mentha-1,5-dien-8-ol   | 0.51   |
| 29.111 | Terpinen-4-ol               | 0.58   |
| 29.509 | para-Cymen-8-ol             | 0.41   |
| 30.133 | Myrtenol                    | 0.67   |
| 30.920 | Verbenone                   | 0.81   |
| 31.728 | trans-Carveol               | 0.22   |
| 33.434 | Carvone                     | 0.07   |
| 34.888 | Unidentified                | 0.07   |
| 36.241 | Bornyl acetate              | 0.57   |
| 40.366 | alpha-Terpinyl acetate      | 0.22   |
| 40.629 | Eugenol                     | 0.10   |
| 42.331 | alpha-Copaene               | 0.08   |
| 42.856 | beta-Bourbonene             | 0.24   |
| 43.212 | beta-Elementene             | 0.59   |
| 45.150 | beta-Caryophyllene          | 0.32   |
| 47.402 | alpha-Humulene              | 0.12   |
| 47.674 | Alloaromadendrene           | 0.04   |
| 48.604 | trans-Cadina-1(6),4-diene   | 0.04   |
| 49.080 | Unidentified                | 0.06   |
| 49.488 | beta-Selinene               | 0.47   |
| 49.913 | alpha-Selinene              | 0.21   |
| 50.931 | gamma-Cadinene              | 0.06   |
| 51.242 | delta-Cadinene              | 0.13   |
| 55.037 | Caryophyllene oxide         | 0.19   |
| 59.207 | alpha-Eudesmol              | 0.10   |
|        |                             | 100.00 |

Chromatogram Frankincense - Barefut



Comments:

The analysis of this Frankincense - sacra batch sample meets the expected chemical profile for authentic essential oil of *Boswellia sacra*. No contamination or adulteration was detected. The results provided in this GCMS quality analysis reflect the chemical composition of the oil and lot referenced above on the date of analysis.