

Sample Information

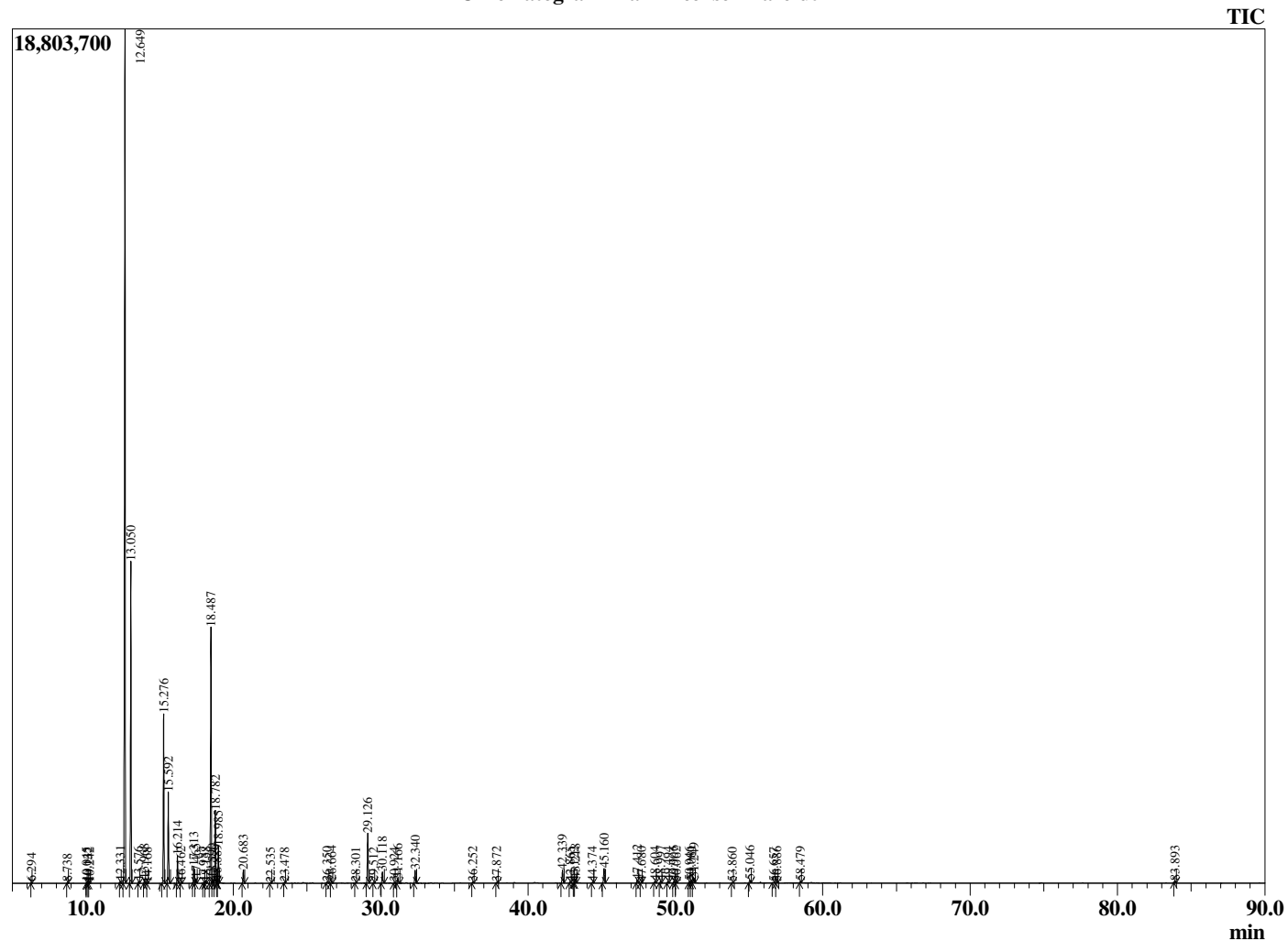
Analyzed by : Dr. Robert S. Pappas
 Analyzed : 5/15/2020 12:17:56 AM
 Sample Type : Essential Oil
 Sample Name : Frankincense - Barefut
 Sample ID : 0101
 Injection Volume : 0.10
 Instrument ID : GC-3



Peak Report TIC

R.Time	Name	Area%
6.294	Toluene	0.03
8.738	3-Methyl pentanol	0.03
10.045	Isopentyl acetate	0.04
10.132	2-Methylbutyl acetate	0.04
10.242	Unidentified	0.02
12.331	Hashishene	0.08
12.649	alpha-Thujene	44.23
13.050	alpha-Pinene	13.60
13.576	Thujadiene isomer	0.07
13.968	Camphene	0.17
14.168	Thuja-2,4(10)diene	0.03
15.276	Sabinene	7.50
15.592	beta-Pinene	4.08
16.214	Myrcene	1.20
16.462	1-Isopropyl-1-methylcyclohexane	0.05
17.313	alpha-Phellandrene	0.76
17.465	delta-3-Carene	0.21
17.987	alpha-Terpinene	0.06
18.138	ortho-Cymene	0.06
18.487	para-Cymene	12.76
18.590	Unidentified	0.25
18.782	Limonene	3.60
18.889	beta-Phellandrene	0.14
18.985	1,8-cineole	1.78
20.683	gamma-Terpinene	0.68
22.535	Terpinolene	0.04
23.478	Linalool	0.04
26.350	trans-Pinocarveol	0.09
26.664	trans-Verbenol	0.12
28.301	Unidentified	0.02
29.126	Terpinen-4-ol	2.72
29.512	para-Cymen-8-ol	0.03
30.118	alpha-Terpineol	0.67
30.924	Verbenone	0.04
31.166	Octyl acetate	0.24
32.340	Decyl methyl ether	0.72
36.252	Bornyl acetate	0.08
37.872	Unidentified	0.04
42.339	alpha-Copaene	0.79
42.865	beta-Bourbonene	0.06
43.122	beta-Cubebene	0.03
43.218	beta-Elemene	0.22
44.374	alpha-Gurjunene	0.05
45.160	beta-Caryophyllene	0.85
47.412	alpha-Humulene	0.20
47.680	Alloaromadendrene	0.05
48.604	trans-Cadina-1(6),4-diene	0.08
48.997	Germacrene D	0.12
49.494	beta-Selinene	0.09
49.906	alpha-Selinene	0.12
50.062	alpha-Muurolene	0.05
50.946	gamma-Cadinene	0.08
51.081	Cubebol	0.17
51.249	delta-Cadinene	0.26
53.860	Unidentified	0.04
55.046	Caryophyllene oxide	0.17
56.657	Humulene epoxide II	0.04
56.886	10-epi-gamma-Eudesmol	0.06
58.479	tau-Cadinol	0.05
83.893	Serratol	0.09
		100.00

Chromatogram Frankincense - Barefut



Comments:

The analysis of this Frankincense - Frereana batch sample meets the expected chemical profile for authentic essential oil of

Boswellia frereana. No contamination or adulteration was detected.

The results provided in this GCMS quality analysis reflect the chemical composition of the oil and lot referenced above on the date of analysis.