

Sample Information

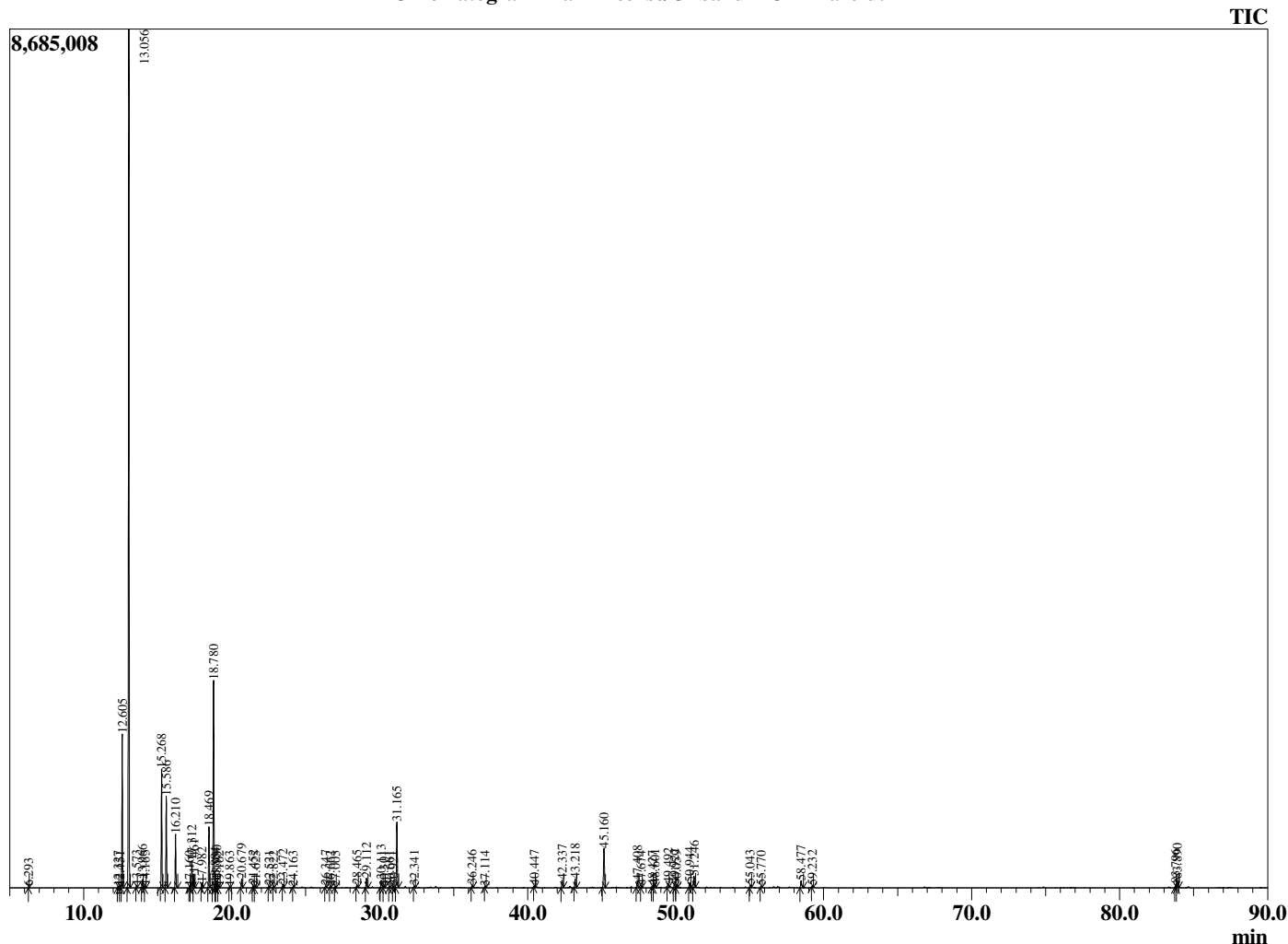
Analyzed by : Dr. Robert S. Pappas
 Analyzed : 4/11/2020 5:00:27 AM
 Sample Type : Essential Oil
 Sample Name : Frankincense/Olibanum Oil - Barefut
 Sample ID : 0108
 Injection Volume : 0.10
 Instrument ID : GC-3



Peak Report TIC

R.Time	Name	Area%
6.293	Toluene	0.03
12.327	Hashishene	0.06
12.451	Tricyclene	0.05
12.605	alpha-Thujene	7.19
13.056	alpha-Pinene	44.96
13.573	Thujadiene isomer	0.10
13.966	Camphene	0.39
14.165	Thuja-2,4(10)diene	0.10
15.268	Sabinene	5.96
15.586	beta-Pinene	4.73
16.210	Myrcene	2.76
17.160	Pseudolimonene	0.07
17.312	alpha-Phellandrene	1.47
17.461	delta-3-Carene	0.74
17.982	alpha-Terpinene	0.29
18.469	para-Cymene	3.25
18.780	Limonene	11.28
18.884	beta-Phellandrene	0.25
18.980	1,8-cineole	0.41
19.162	cis-beta-Ocimene	0.10
19.863	trans-beta-Ocimene	0.06
20.679	gamma-Terpinene	0.50
21.452	1-Octanol	0.17
21.625	Pinol	0.08
22.521	Terpinolene	0.08
22.822	para-Cymenene	0.07
23.472	Linalool	0.15
24.163	Unidentified	0.05
26.347	trans-Pinocarveol	0.09
26.662	trans-Verbenol	0.07
27.003	alpha-Phellandren-8-ol	0.07
28.465	para-Mentha-1,5-dien-8-ol	0.16
29.112	Terpinen-4-ol	0.60
30.113	alpha-Terpineol	0.57
30.301	Estragole	0.08
30.661	alpha-Phellandrene epoxide	0.07
30.921	Verbenone	0.08
31.165	Octyl acetate	4.08
32.341	Decyl methyl ether	0.12
36.246	Bornyl acetate	0.17
37.114	Thymol	0.06
40.447	alpha-Cubebene	0.09
42.337	alpha-Copaene	0.55
43.218	beta-Elemene	0.54
45.160	beta-Caryophyllene	2.72
47.408	alpha-Humulene	0.46
47.674	Alloaromadendrene	0.10
48.427	10-beta-H-Cadina-1(6),4-diene	0.10
48.601	trans-Cadina-1(6),4-diene	0.22
49.492	beta-Selinene	0.25
49.922	alpha-Selinene	0.24
50.059	alpha-Muurolole	0.14
50.944	gamma-Cadinene	0.35
51.246	delta-Cadinene	0.82
55.043	Caryophyllene oxide	0.20
55.770	Viridiflorol	0.09
58.477	tau-Cadinol	0.55
59.232	Unidentified	0.09
83.796	Incensole	0.23
83.890	Serratol	0.70
		100.00

Chromatogram Frankincense/Olibanum Oil - Barefut



Comments:

The analysis of this Frankincense batch sample meets the expected chemical profile for authentic essential oil of *Boswellia carterii*. No contamination or adulteration was detected. The results provided in this GCMS quality analysis reflect the chemical composition of the oil and lot referenced above on the date of analysis.