

Sample Information

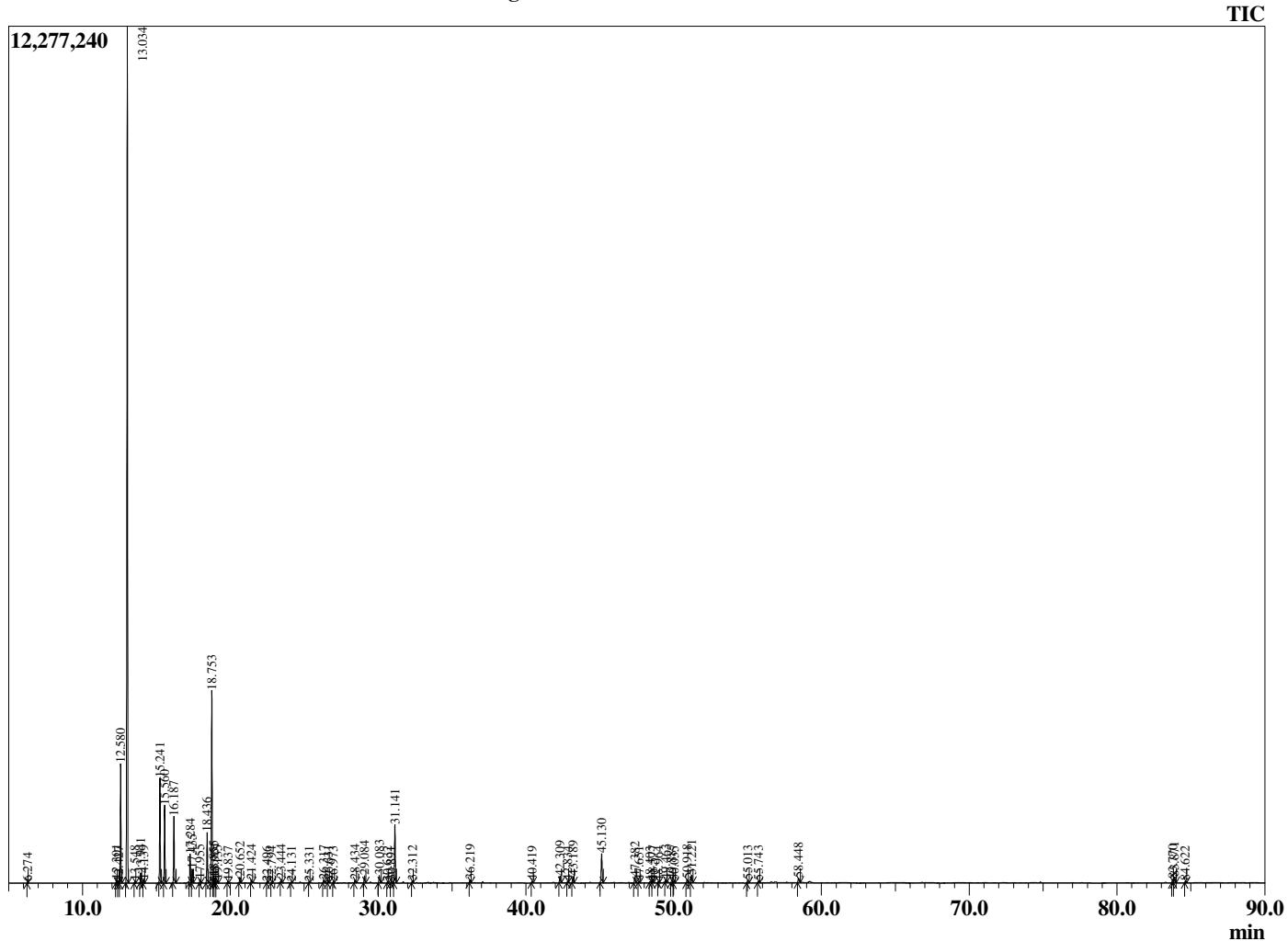
Analyzed by : Dr. Robert S. Pappas
 Analyzed : 3/16/2020 9:20:46 AM
 Sample Type : Essential Oil
 Sample Name : Frankincense - carterii - Barefut
 Sample ID : 0107
 Injection Volume : 0.10
 Instrument ID : GC-3



Peak Report TIC

R.Time	Name	Area%
6.274	Toluene	0.04
12.301	Hashishene	0.17
12.427	Tricyclene	0.07
12.580	alpha-Thujene	5.79
13.034	alpha-Pinene	48.76
13.548	Thujadiene isomer	0.12
13.941	Camphene	0.52
14.139	Thuja-2,4(10)diene	0.15
15.241	Sabinene	5.43
15.560	beta-Pinene	4.18
16.187	Myrcene	3.67
17.284	alpha-Phellandrene	1.65
17.435	delta-3-Carene	0.74
17.955	alpha-Terpinene	0.20
18.436	para-Cymene	2.87
18.753	Limonene	11.26
18.855	beta-Phellandrene	0.35
18.951	1,8-Cineole	0.30
19.135	cis-beta-Ocimene	0.17
19.837	trans-beta-Ocimene	0.09
20.652	gamma-Terpinene	0.34
21.424	1-Octanol	0.20
22.496	Terpinolene	0.07
22.794	para-Cymenene	0.05
23.444	Linalool	0.19
24.131	Unidentified	0.06
25.331	alpha-Campholenal	0.05
26.317	trans-Pinocarveol	0.19
26.631	trans-Verbenol	0.17
26.973	alpha-Phellandrene-8-ol	0.07
28.434	para-Mentha-1,5-dien-8-ol	0.19
29.084	Terpinen-4-ol	0.44
30.083	alpha-Terpineol	0.55
30.632	alpha-Phellandrene epoxide	0.06
30.891	Verbenone	0.10
31.141	Octyl acetate	3.81
32.312	Decyl methyl ether	0.11
36.219	Bornyl acetate	0.18
40.419	alpha-Cubebene	0.08
42.309	alpha-Copaene	0.43
42.834	beta-Bourbonene	0.08
43.189	beta-Elemene	0.43
45.130	beta-Caryophyllene	2.11
47.382	alpha-Humulene	0.39
47.651	Alloaromadendrene	0.09
48.403	10-beta-H-Cadina-1(6),4-diene	0.08
48.577	trans-Cadina-1(6),4-diene	0.14
48.964	Germacrene D	0.05
49.463	beta-Selinene	0.18
49.887	alpha-Selinene	0.21
50.035	alpha-Muurolene	0.10
50.918	gamma-Cadinene	0.24
51.221	delta-Cadinene	0.55
55.013	Caryophyllene oxide	0.22
55.743	Viridiflorol	0.12
58.448	tau-Cadinol	0.34
83.770	Incensole	0.24
83.871	Serratol	0.48
84.622	Incensyl acetate	0.08
		100.00

Chromatogram Frankincense - carterii - Barefut



Comments:

The analysis of this Frankincense - carterii batch sample meets the expected chemical profile for authentic essential oil of *Boswellia carterii*. No contamination or adulteration was detected. The results provided in this GCMS quality analysis reflect the chemical composition of the oil and lot referenced above on the date of analysis.