

Sample Information

Analyzed by : Dr. Robert S. Pappas
 Analyzed : 7/4/2019 5:24:03 AM
 Sample Type : Essential Oil
 Sample Name : *Boswellia carterii* - Barefut
 Sample ID : 0106
 Injection Volume : 0.10
 Instrument ID : GC-3

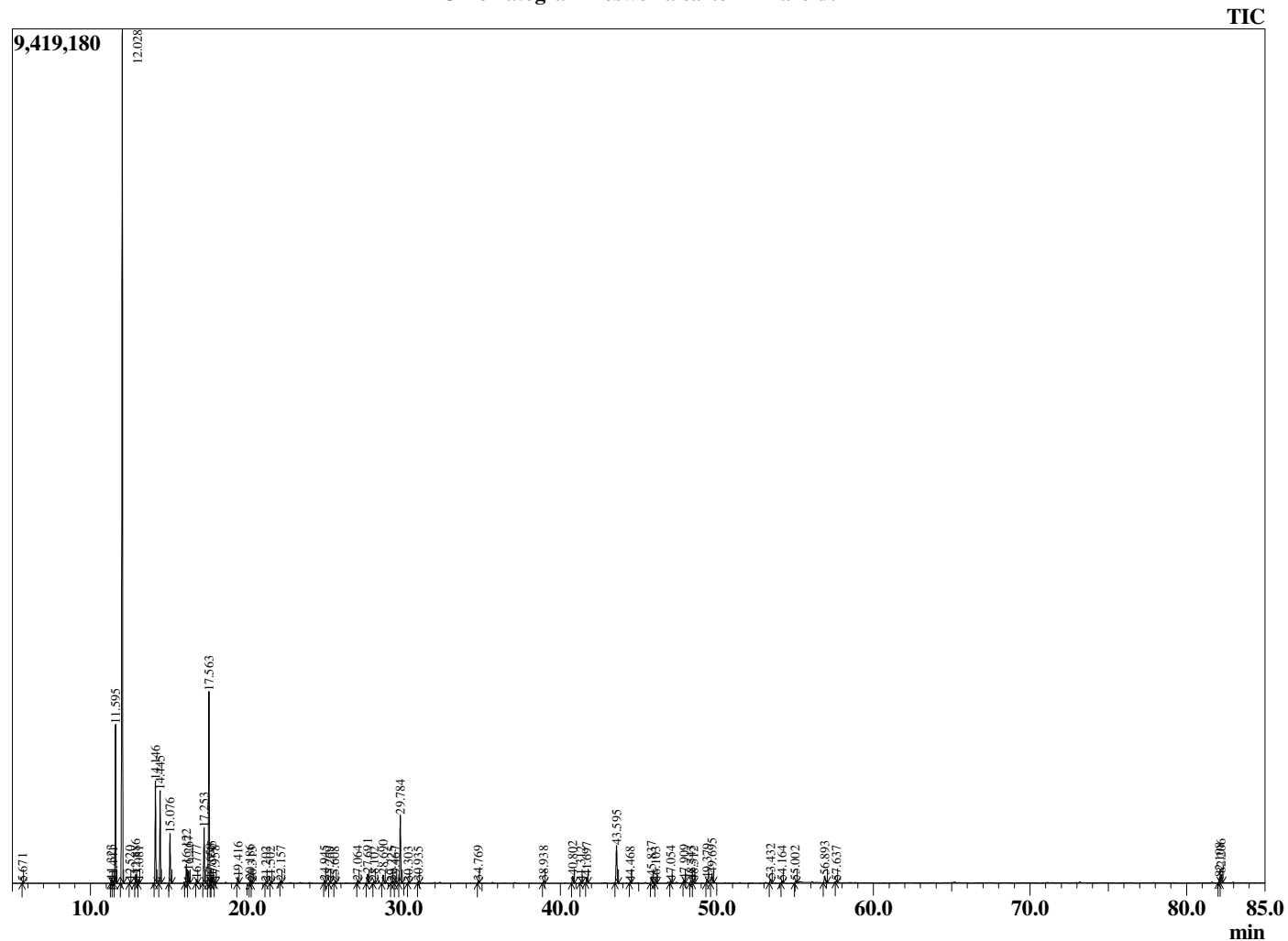


Peak Report TIC

R.Time	Name	Area%
5.671	Toluene	0.04
11.323	Hashishene	0.17
11.441	Tricyclene	0.06
11.595	alpha-Thujene	7.44
12.028	alpha-Pinene	46.94
12.520	Thujadiene isomer	0.09
12.886	Camphene	0.43
13.081	Thuja-2,4(10)diene	0.12
14.146	Sabinene	5.29
14.445	beta-Pinene	4.72
15.076	Myrcene	2.58
16.122	alpha-Phellandrene	1.06
16.267	delta-3-Carene	0.66
16.777	alpha-Terpinene	0.20
17.253	para-Cymene	3.03
17.563	Limonene	10.72
17.658	beta-Phellandrene	0.19
17.745	1,8-Cineole	0.37
17.958	cis-beta-Ocimene	0.09
19.416	gamma-Terpinene	0.35
20.186	n-Octanol	0.21
20.313	Pinol	0.07
21.202	Terpinolene	0.07
21.502	para-Cymenene	0.08
22.157	Linalool	0.10
24.945	trans-Pinocarveol	0.14
25.269	trans-Verbenol	0.09
25.608	alpha-Phellandren-8-ol	0.09
27.064	para-Mentha-1,5-dien-8-ol	0.13
27.691	Terpinen-4-ol	0.59
28.102	para-Cymen-8-ol	0.10
28.690	alpha-Terpineol	0.61
29.225	alpha-Phellandrene epoxide	0.08
29.467	Verbenone	0.12
29.784	Octyl acetate	4.29
30.303	trans-Carveol	0.09
30.935	Decyl methyl ether	0.09
34.769	Bornyl acetate	0.16
38.938	alpha-Cubebene	0.12
40.802	alpha-Copaene	0.50
41.312	beta-Bourbonene	0.09
41.697	beta-Elemene	0.42
43.595	beta-Caryophyllene	2.69
44.468	trans-alpha-Bergamotene	0.08
45.837	alpha-Humulene	0.46
46.103	Alloaromadendrene	0.08
47.054	trans-Cadina-1(6),4-diene	0.17
47.909	beta-Selinene	0.19
48.343	alpha-Selinene	0.20
48.512	alpha-Murolene	0.11
49.379	gamma-Cadinene	0.28
49.695	delta-Cadinene	0.67
53.432	Caryophyllene oxide	0.33
54.164	Viridiflorol	0.16
55.002	Unidentified	0.12
56.893	alpha-Murolol (=Torreyol)	0.55
57.637	Unidentified	0.11
82.108	Incensole	0.37
82.206	Serratol	0.65
		100.00

This report is valid for 1 year from the analyzed date.

Chromatogram *Boswellia carterii* - Barefut



Comments:
 The analysis of this Frankincense - carterii batch sample meets the expected chemical profile for authentic essential oil of *Boswellia carterii*. No contamination or adulteration was detected.