

Sample Information

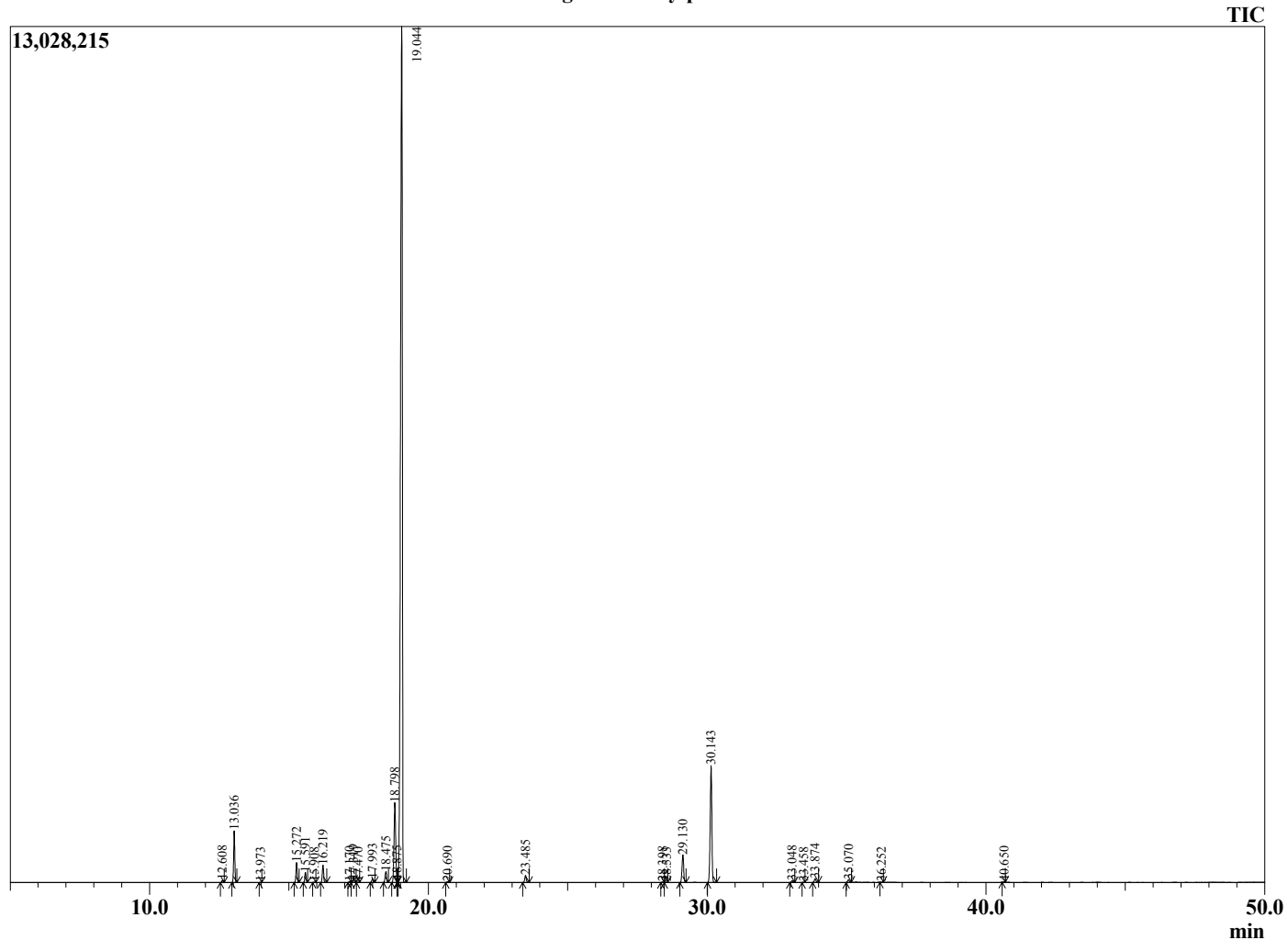
Analyzed by : Dr. Robert S. Pappas
 Analyzed : 4/4/20 2:37:11 PM
 Sample Type : Essential Oil
 Sample Name : Eucalyptus - Barefut
 Sample ID : 0110
 Injection Volume : 0.10
 Instrument ID: : GC-3



Peak Report TIC

R.Time	Name	Area%
12.608	alpha-Thujene	0.13
13.036	alpha-Pinene	2.96
13.973	Camphene	0.01
15.272	Sabinene	1.23
15.591	beta-Pinene	0.63
15.908	Unidentified	0.02
16.219	Myrcene	1.09
17.170	Pseudolimonene	0.06
17.319	alpha-Phellandrene	0.20
17.470	delta-3-Carene	0.02
17.993	alpha-Terpinene	0.23
18.475	para-Cymene	0.79
18.798	Limonene	6.36
18.875	beta-Phellandrene	0.06
19.044	1,8-cineole	73.50
20.690	gamma-Terpinene	0.06
23.485	Linalool	0.52
28.398	delta-Terpineol	0.03
28.533	Unidentified	0.01
29.130	Terpinen-4-ol	2.10
30.143	alpha-Terpineol	9.32
33.048	Neral	0.13
33.458	Carvone	0.02
33.874	Geraniol	0.29
35.070	Geraniol	0.21
36.252	Bornyl acetate	0.02
40.650	Eugenol	0.02
		100.00

Chromatogram Eucalyptus - Barefut



Comments:

The analysis of this Eucalyptus radiata batch sample meets the expected chemical profile for authentic essential oil of *Eucalyptus radiata*. No contamination or adulteration was detected. The results provided in this GCMS quality analysis reflect the chemical composition of the oil and lot referenced above on the date of analysis.