

Sample Information

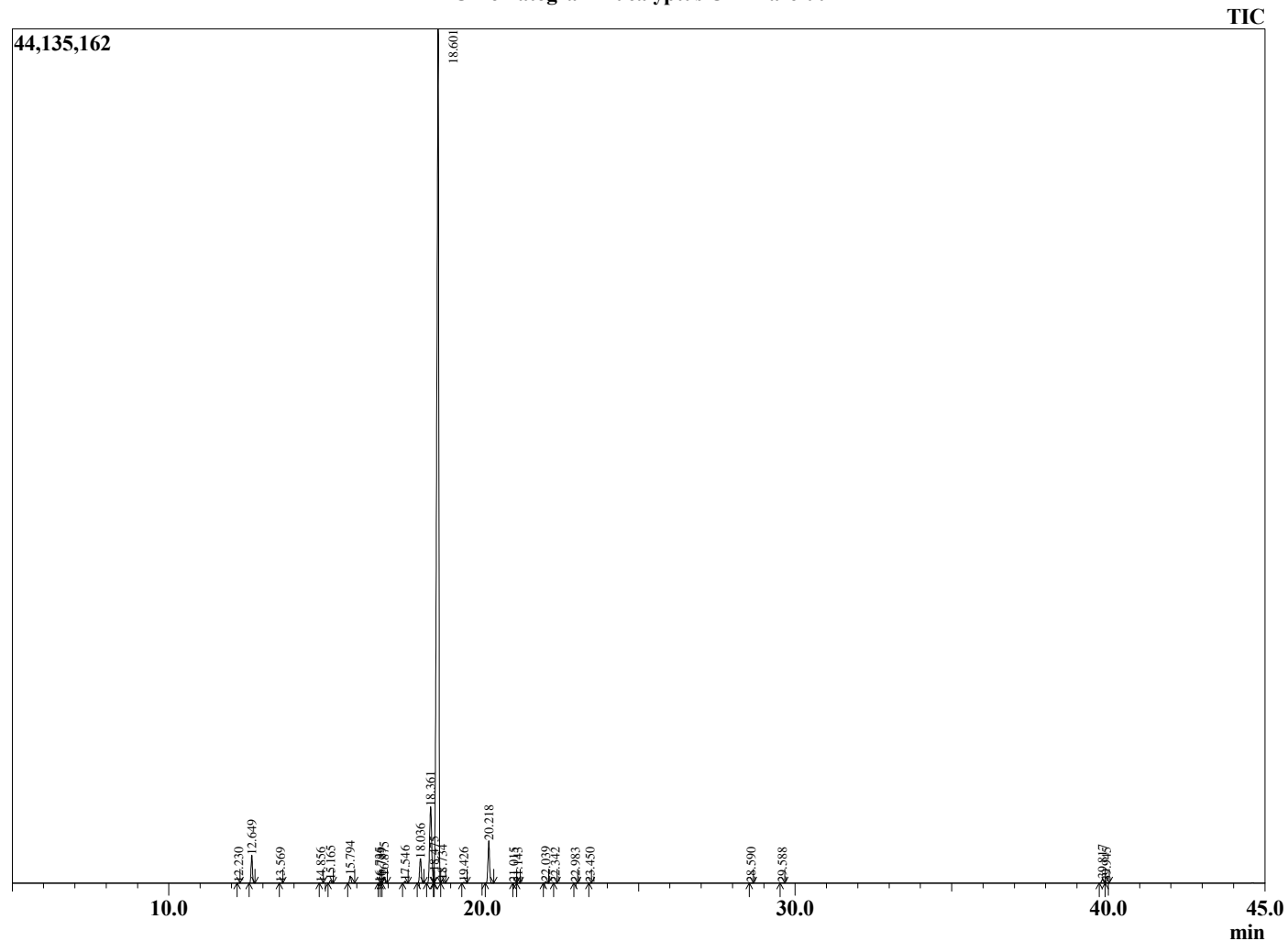
Analyzed by : Dr. Robert S. Pappas
 Analyzed : 6/28/2021 11:08:02 AM
 Sample Type : Essential Oil
 Sample Name : Eucalyptus Oil - Barefut
 Sample ID : 0103
 Injection Volume : 0.10
 Instrument ID: : GC-3



Peak Report TIC

R.Time	Name	Area%
12.230	alpha-Thujene	0.01
12.649	alpha-Pinene	1.83
13.569	Camphene	0.01
14.856	Sabinene	0.01
15.165	beta-Pinene	0.20
15.794	Myrcene	0.52
16.735	Pseudolimonene	0.01
16.789	Unidentified	0.02
16.875	alpha-Phellandrene	0.46
17.546	alpha-Terpinene	0.15
18.036	para-Cymene	1.95
18.361	Limonene	7.59
18.475	beta-Phellandrene	0.22
18.601	1,8-cineole	82.96
18.734	(Z)-beta-Ocimene	0.25
19.426	(E)-beta-Ocimene	0.06
20.218	gamma-Terpinene	3.20
21.015	cis-Linalool oxide (furanoid)	0.01
21.143	Pinol	0.01
22.039	Terpinolene	0.11
22.342	para-Cymenene	0.01
22.983	Linalool	0.01
23.450	Isoamyl isovalerate	0.00
28.590	Terpinen-4-ol	0.01
29.588	alpha-Terpineol	0.04
39.817	alpha-Terpinyl acetate	0.32
39.945	gamma-Terpinyl acetate	0.04
		100.00

Chromatogram Eucalyptus Oil - Barefut



Comments:

The analysis of this Eucalyptus batch sample meets the expected chemical profile for authentic essential oil of *Eucalyptus globulus*. No contamination or adulteration was detected. The results provided in this GCMS quality analysis reflect the chemical composition of the oil and lot referenced above on the date of analysis.