

Sample Information

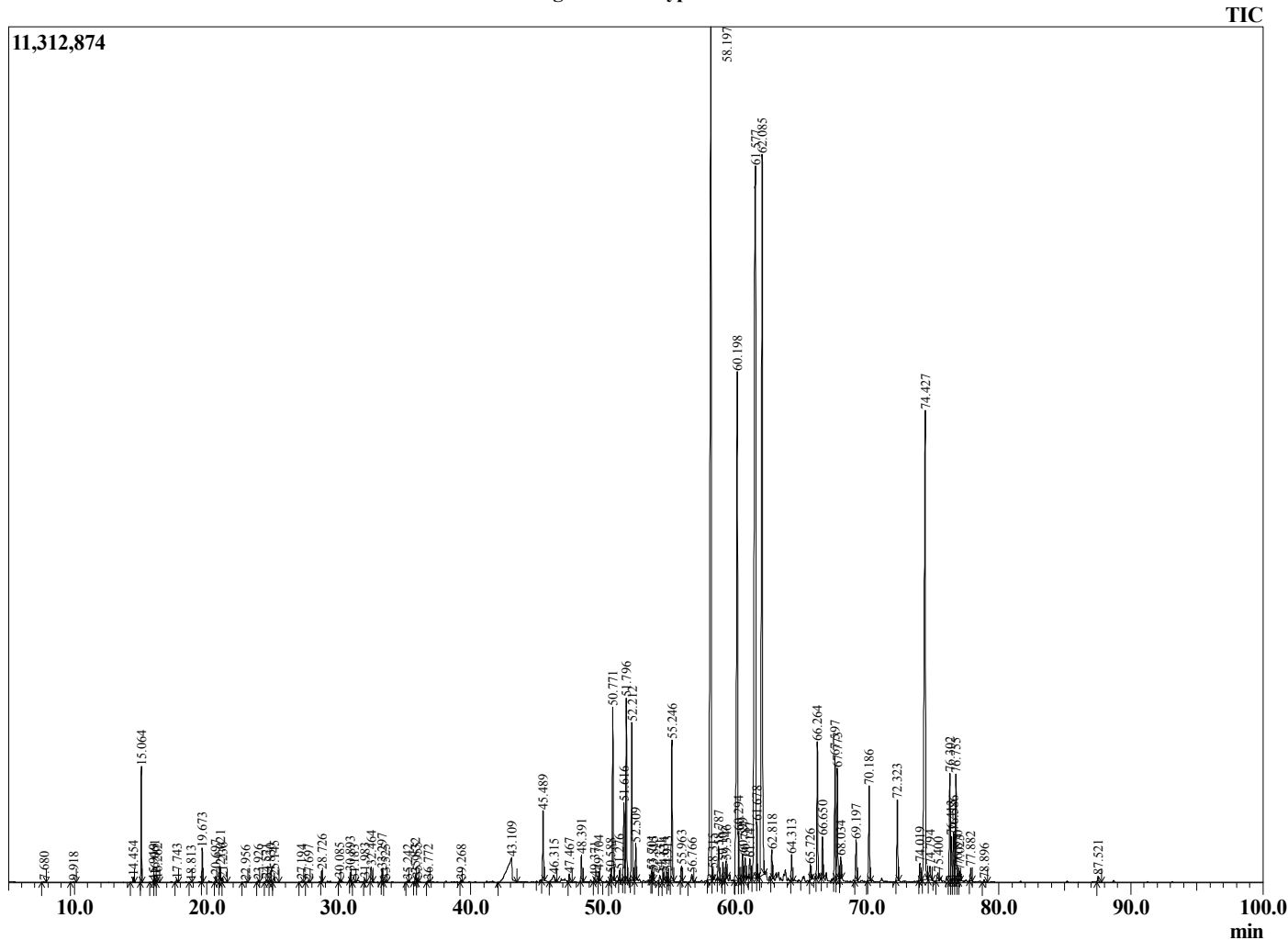
Analyzed by : Dr. Robert S. Pappas
 Analyzed : 5/8/2020 12:09:50 AM
 Sample Type : Essential Oil
 Sample Name : Blue Cypress - Barefut
 Sample ID : 0104
 Injection Volume : 0.10
 Instrument ID : GC-2



Peak Report TIC

R.Time	Name	Area%
7.680	Toluene	0.01
9.918	Furfural	0.01
14.454	Tricyclene	0.05
15.064	alpha-Pinene	1.05
15.949	alpha-Fenchene	0.02
16.061	Camphene	0.06
16.262	Thuja-2,4(10)diene	0.03
17.743	beta-Pinene	0.03
18.813	Unidentified	0.01
19.673	3-Carene	0.34
20.697	para-Cymene	0.07
21.021	Limonene	0.15
21.236	1,8-Cineole	0.04
22.956	gamma-Terpinene	0.01
23.926	Pinol	0.02
24.521	ortho-Cymenene	0.05
24.830	Terpinolene	0.03
25.145	para-Cymenene	0.08
27.194	endo-Fenchol	0.03
27.697	alpha-Campholenal	0.02
28.726	trans-Pinocarveol	0.12
30.085	Pinocamphone	0.04
30.893	Borneol	0.09
31.183	Isopinocamphone	0.02
31.983	Unidentified	0.04
32.464	alpha-Terpineol	0.25
33.297	Verbenone	0.14
33.525	Eucarvone	0.02
35.242	trans-Myrtranol	0.02
35.832	Unidentified	0.09
35.955	Unidentified	0.04
36.772	Unidentified	0.02
39.268	Methyl myrtenate	0.02
43.109	Myrtenoic acid	1.88
45.489	beta-Elemene	0.90
46.315	Unidentified	0.22
47.467	trans-beta-Caryophyllene	0.11
48.391	alpha-Guaiene	0.35
49.371	Unidentified	0.06
49.704	alpha-Humulene	0.10
50.588	Unidentified	0.13
50.771	Unidentified	2.17
51.276	Unidentified	0.11
51.616	4-epi-cis-Dihydroagarofuran	1.18
51.796	beta-Selinene	2.29
52.212	alpha-Selinene	2.10
52.509	alpha-Bulnesene	0.46
53.701	Unidentified	0.10
53.815	Unidentified	0.08
54.331	Unidentified	0.15
54.634	Selina-4(15),7(11)-diene	0.14
54.913	Selina-3,7(11)-diene	0.10
55.246	alpha-Elemol	1.91
55.963	Unidentified	0.20
56.766	Unidentified	0.17
58.197	Guaiol	15.21
58.315	Unidentified	0.10
58.787	Guaiol isomer	0.50
59.105	Rosifoliol	0.23
59.346	Juniper camphor	0.21
60.198	gamma-Eudesmol	8.76
60.294	Unidentified	0.57

Chromatogram Blue Cypress - Barefut



Comments:

The analysis of this Blue Cypress batch sample meets the expected chemical profile for authentic essential oil of *Callitris intratropica*. No contamination or adulteration was detected. The results provided in this GCMS quality analysis reflect the chemical composition of the oil and lot referenced above on the date of analysis.

©Copyright 2020 by Essential Oil University. All rights reserved. Any publishing, copying, use, dissemination, or distribution of this report, including online, without the express written permission of Essential Oil University is strictly prohibited.

R.Time	Name	Area%
60.599	Agarospinol	0.35
60.787	Unidentified	0.33
61.147	Unidentified	0.32
61.577	alpha-Eudesmol	17.67
61.678	Unidentified	0.51
62.085	Bulnesol	12.87
62.818	Unidentified	0.35
64.313	Unidentified	0.35
65.726	Unidentified	0.19
66.264	Unidentified	1.82
66.650	Unidentified	0.50
67.597	Unidentified	1.64
67.773	Unidentified	1.52
68.034	Unidentified	0.27
69.197	Unidentified	0.60
70.186	Callitrin	1.32
72.323	Callitrisin isomer	1.09
74.019	Unidentified	0.23
74.427	Dihydrocolumellarin	9.03
74.794	Unidentified	0.31
75.400	Unidentified	0.20
76.302	Callitrisin	1.61
76.413	Unidentified	0.60
76.586	Unidentified	0.68
76.755	Columellarin	1.49
76.870	Unidentified	0.20
77.023	Unidentified	0.15
77.882	Unidentified	0.17
78.896	Unidentified	0.03
87.521	Unidentified	0.09
		100.00