

Sample Information

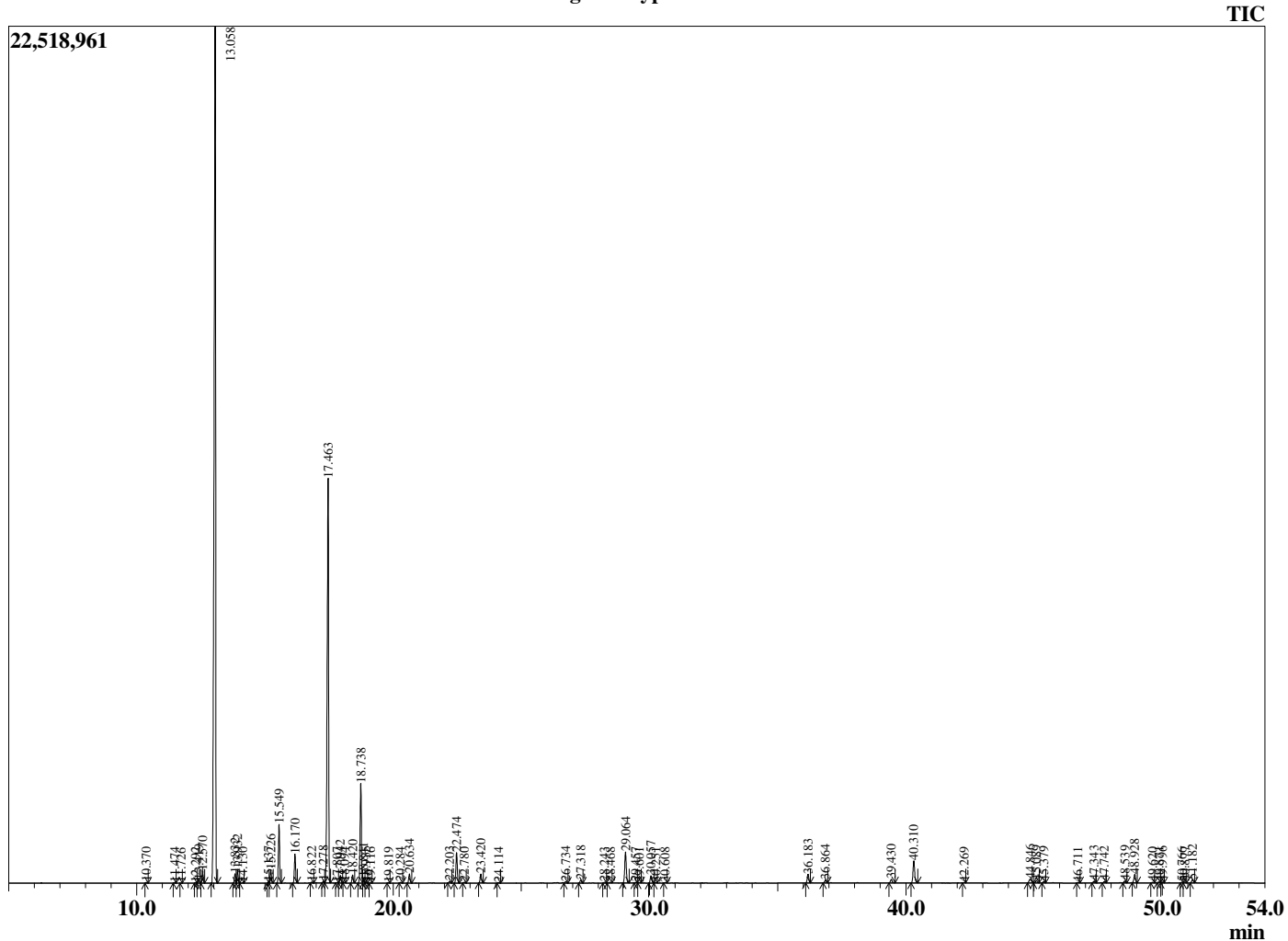
Analyzed by : Dr. Robert S. Pappas
 Analyzed : 10/1/2020 11:14:32 AM
 Sample Type : Essential Oil
 Sample Name : Cypress Oil-Barefut
 Sample ID : 0106
 Injection Volume : 0.10
 Instrument ID : GC-3



Peak Report TIC

R.Time	Name	Area%
10.370	Santene	0.04
11.474	2-Bornene	0.03
11.726	Unidentified	0.00
12.292	Hashishene	0.03
12.419	Tricyclene	0.16
12.570	alpha-Thujene	0.52
13.058	alpha-Pinene	52.64
13.832	alpha-Fenchene	0.43
13.932	Camphene	0.62
14.130	Thuja-2,4(10)diene	0.03
15.137	Cymene Isomer	0.06
15.226	Sabinene	0.62
15.549	beta-Pinene	2.76
16.170	Myrcene	1.35
16.822	2-Carene	0.04
17.278	alpha-Phellandrene	0.09
17.463	delta-3-Carene	22.88
17.807	1,4-Cineole	0.02
17.942	alpha-Terpinene	0.38
18.094	ortho-Cymene	0.03
18.420	para-Cymene	0.40
18.738	Limonene	5.05
18.841	beta-Phellandrene	0.25
18.935	1,8-Cineole	0.05
19.116	(Z)-Beta-Ocimene	0.01
19.819	(E)-Beta_Ocimene	0.02
20.284	gamma-Terpinene Isomer	0.03
20.634	gamma-Terpinene	0.46
22.203	Isoterpinolene	0.09
22.474	Terpinolene	1.58
22.780	alpha, para-Dimethylstyrene	0.05
23.420	Linalool	0.48
24.114	Unidentified	0.03
26.734	Camphor	0.09
27.318	Karahanaenone	0.16
28.243	Umbellulone	0.05
28.468	Borneol	0.06
29.064	Terpinen-4-ol	1.86
29.457	para-Cymen-8-ol	0.03
29.601	Unidentified	0.03
30.057	alpha-Terpineol	0.44
30.251	Methyl Chavicol	0.03
30.608	Unidentified	0.02
36.183	Bornyl acetate	0.52
36.864	Isobornyl acetate	0.17
39.430	Ocimenyl acetate	0.23
40.310	alpha-Terpinyl acetate	1.41
42.269	alpha-Copaene	0.02
44.846	alpha-Cedrene	0.32
45.089	beta-Caryophyllene	0.17
45.379	beta-Cedrene	0.07
46.711	cis-Murrola-3,5-diene	0.03
47.343	alpha-Humulene	0.12
47.742	Unidentified	0.08
48.539	trans-Cadina-1(6),4-diene	0.12
48.928	Germacrene D	0.53
49.620	trans-Murrola-4(14),5-diene	0.03
49.871	Unidentified	0.04
49.996	alpha-Murolene	0.04
50.766	alpha-Alaskene	0.04
50.877	gamma-Cadinene	0.06
51.182	delta-Cadinene	0.21

Chromatogram Cypress Oil-Barefut



Comments:

The analysis of this Cypress batch sample meets the expected chemical profile for authentic essential oil of *Cupressus sempervirens*. No contamination or adulteration was detected. The results provided in this GCMS quality analysis reflect the chemical composition of the oil and lot referenced above on the date of analysis.

R.Time Name
56.548 Cedrol

Area%
1.79
100.00