

Sample Information

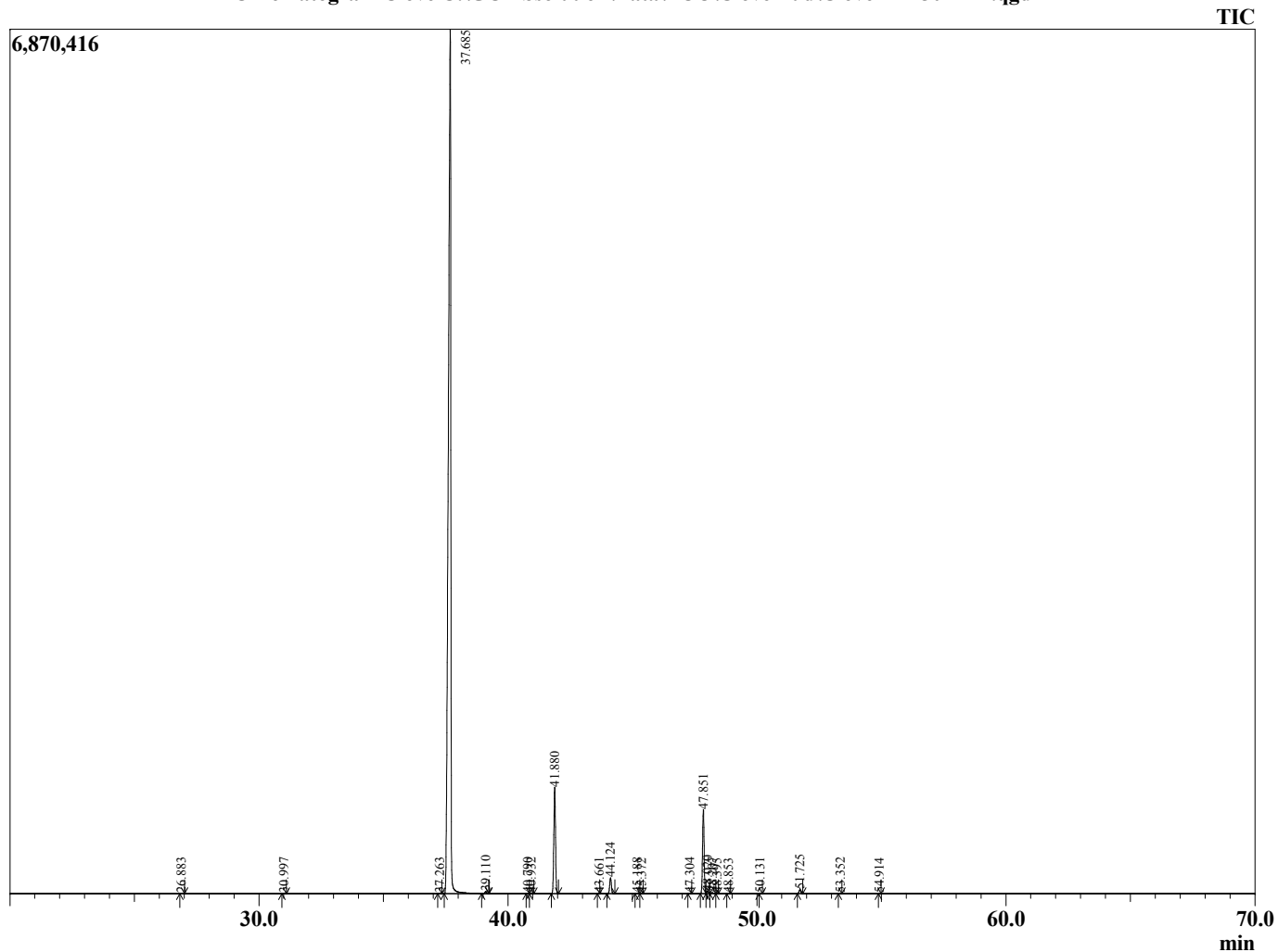
Analyzed by : Dr. Robert S. Pappas
 Analyzed : 7/28/2015 12:27:08 AM
 Sample Type : Essential Oil
 Sample Name : Clove
 Sample ID : BA150727A
 Injection Volume : 0.10
 Data File : C:\GCMSsolution\Data\EOU\Clove Bud\Clove BA150727A.qgd



Peak Report TIC

R.Time	Name	Area%
26.883	Methyl salicylate	0.03
30.997	Chavicol.	0.03
37.263	Cubebene <alpha>	0.03
37.685	Eugenol	85.17
39.110	Copaene <alpha>	0.14
40.790	Eugenol<methyl>	0.03
40.932	Caryophyllene <cis>	0.03
41.880	Caryophyllene <trans>	7.29
43.661	Isoeugenol <trans>	0.02
44.124	Humulene<alpha>	1.09
45.188	Muurolo-4(14),5-diene<Z>	0.03
45.372	Muuroloene<g>	0.01
47.304	Bisabolene <Z-gamma>	0.02
47.851	Eugenol <acetate>	5.45
48.020	Cadinene <delta>	0.20
48.207	Calamenene <trans>	0.10
48.395	Eugenol acetate	0.01
48.853	Cadine-1,4-diene <trans>	0.01
50.131	2R,5E)-caryophyll-5-en-12-al	0.01
51.725	Caryophyllene oxide	0.28
53.352	Humulene epoxide II	0.02
54.914	Caryophylla-4(12),8(13)-dien-5a-ol	0.01
		100.00

Chromatogram Clove C:\GCMSsolution\Data\EOU\Clove Bud\Clove BA150727A.qgd



Comments:

Typical Ranges of Main Components: