

Sample Information

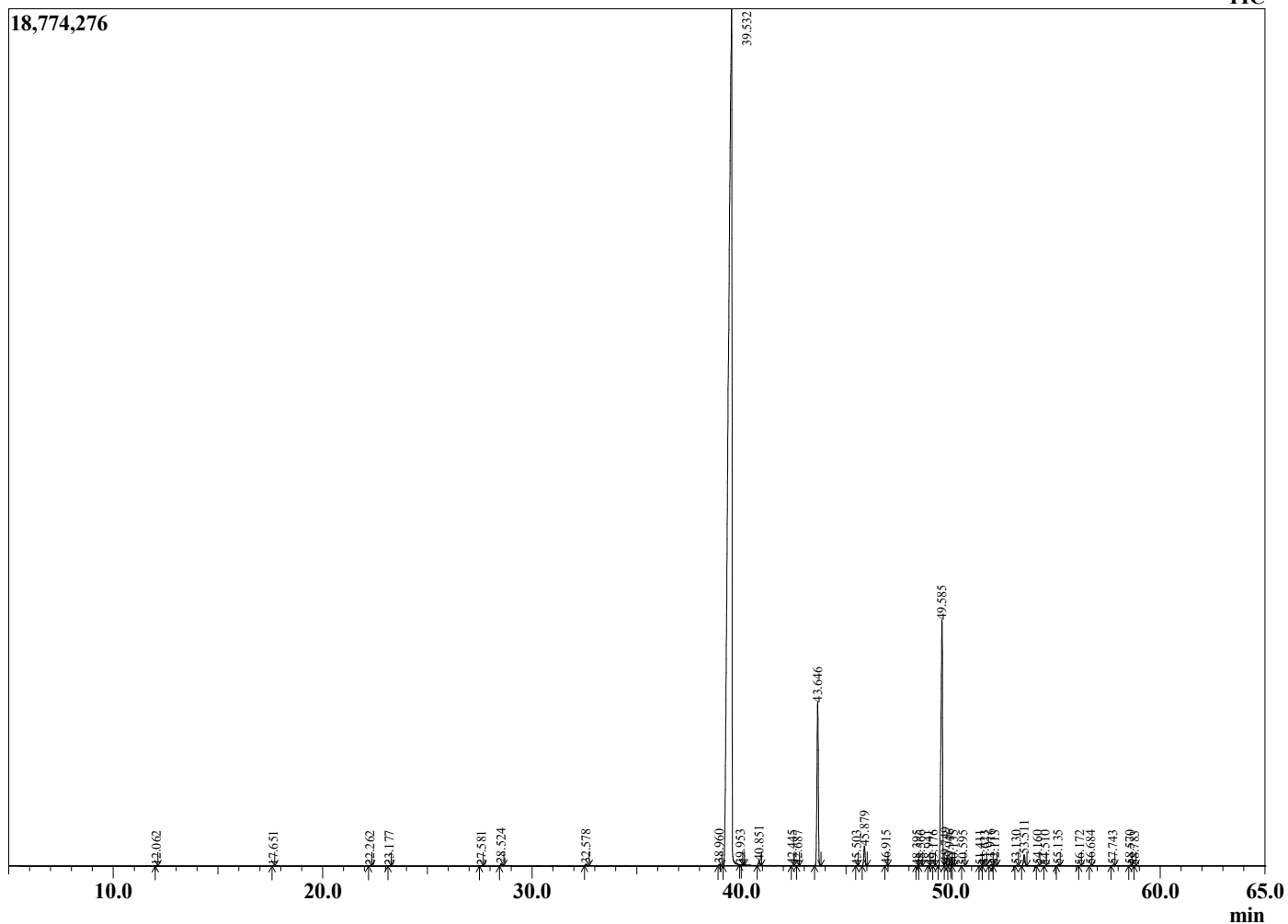
Analyzed by : Dr. Robert S. Pappas
 Analyzed : 1/27/2022 2:24:42 AM
 Sample Type : Essential Oil
 Sample Name : Clove Bud Oil - Barefut
 Sample ID : 0114
 Injection Volume : 0.10
 Instrument ID : GC-2



Peak Report TIC

R.Time	Name	Area%
12.062	alpha-Pinene	0.00
17.651	Limonene	0.01
22.262	Linalool	0.01
23.177	trans-4,8-Dimethyl-nona-1,3,7-triene	0.01
27.581	Unidentified	0.01
28.524	Methyl salicylate	0.08
32.578	Chavicol	0.06
38.960	alpha-Cubebene	0.05
39.532	Eugenol	81.49
39.953	Unidentified	0.01
40.851	alpha-Copaene	0.17
42.445	Methyleugenol	0.01
42.687	cis-Caryophyllene	0.01
43.646	trans-beta-Caryophyllene	5.91
45.503	Alloaromadendrene	0.01
45.879	alpha-Humulene	0.70
46.915	Cadina-1(6),4-diene	0.02
48.395	beta-Selinene	0.01
48.566	alpha-Muurolene	0.01
48.941	trans,trans-alpha-Farnesene	0.01
49.176	Unidentified	0.00
49.585	Eugenyl acetate	10.49
49.749	delta-Cadinene	0.13
49.946	trans-Calamenene	0.08
50.135	Unidentified	0.01
50.595	trans-Cadina-1,4-diene	0.01
51.411	Unidentified	0.02
51.623	Unidentified	0.03
51.916	Unidentified	0.05
52.113	Unidentified	0.02
53.130	Caryophyllene alcohol	0.02
53.511	Caryophyllene oxide	0.43
54.160	Unidentified	0.02
54.510	Unidentified	0.01
55.135	Humulene epoxide II	0.04
56.172	1,10-di-epi-Cubenol	0.01
56.684	Caryophylla-4(12),8(13)-dien-5-beta-ol	0.02
57.743	14-Hydroxycaryophyllene isomer	0.03
58.570	14-Hydroxycaryophyllene isomer	0.02
58.783	cis-alpha-Santalol	0.00
		100.00

Chromatogram Clove Bud Oil - Barefut



Comments:

The analysis of this Clove Bud batch sample meets the expected chemical profile for authentic essential oil of *Eugenia caryophyllata*. No contamination or adulteration was detected. The results provided in this GCMS quality analysis reflect the chemical composition of the oil and lot referenced above on the date of analysis.